

DuraLabel[®] **Catalyst[™]**

USER GUIDE



800.788.5572

DuraLabel.com

1. Preface

Every effort has been made to ensure that the information in this document is complete, accurate, and up-to-date. The manufacturer assumes no responsibility for the results of errors beyond its control. The manufacturer also cannot guarantee that changes in software and equipment made by other manufacturers and referred to in this guide will not affect the applicability of the information in it. Mention of software products manufactured by other companies does not necessarily constitute endorsement by the manufacturer.

While all reasonable efforts have been made to make this document as accurate and helpful as possible, we make no warranty of any kind, expressed or implied, as to the accuracy or completeness of the information contained herein.

Copyright © 2013. All rights reserved.

Energy Star is a trademark of the United States Environmental Protection Agency.

Microsoft, MS-DOS and Windows are registered trademarks of Microsoft Corporation.

Other product names and brand names are registered trademarks or trademarks of their proprietors.



As an Energy Star Program Participant, the manufacturer has determined that this product meets the Energy Star guidelines for energy efficiency.



This product complies with the requirements of the Council Directives 2004/108/EC (EMC), 2006/95/EC (LVD), 1999/5/EC (R&TTE), 2009/125/EC (ErP) and 2011/65/EU (RoHS), as amended where applicable, on the approximation of the laws of the member states relating to Electromagnetic Compatibility, Low Voltage, Radio & Telecommunications Terminal Equipment, Energy related Products and Restriction on the use of certain Hazardous Substances in electrical and electronic equipment.

The following cables were used to evaluate this product to achieve EMC directive 2004/108/EC compliance and configurations other than this may affect that compliance.

CABLE TYPE	LENGTH (Meters)	CORE	SHIELD
Power	1.8	✗	✗
USB	5.0	✗	✓
LAN	7.0	✗	✗

2. Emergency First Aid

Take care with toner powder:



If swallowed, drink small amounts of cold water and seek medical attention. DO NOT attempt to induce vomiting.

If inhaled, move the person to an open area for fresh air. Seek medical attention.

If it gets into the eyes, flush with large amounts of water for at least 15 minutes keeping eyelids open. Seek medical attention.

Spillages should be vacuumed from clothing or surfaces if possible. If any remains after vacuuming it should be treated with soap and cold water to minimize risk of staining.

3. Contents

1. Preface	2
2. Emergency First Aid	3
3. Contents	4
4. Warranty	6
5. Notes, Cautions, and Warnings	7
6. Getting Started	8
6.1 Overview.....	8
Front View.....	8
Rear View.....	9
6.2 Installing Catalyst.....	9
6.3 Installing Paper Tray 2.....	16
6.4 Energy Saving Settings.....	17
Power Save Mode.....	17
Sleep Mode.....	17
Returning to Standby Mode.....	17
7. Paper Recommendations	18
7.1 Cassette Trays.....	18
7.2 Multi-purpose Tray.....	18
7.3 Face Down Stacker.....	19
7.4 Face Up Stacker.....	19
7.5 Duplexing.....	19
8. Loading Paper	20
8.1 Cassette Trays.....	20
8.2 Multi-purpose Tray.....	23
9. Printing Settings In Windows	24
9.1 Standard Print Settings.....	24
Layout Tab.....	25
Advanced Options.....	26
Paper/Quality Tab.....	27
Job Options Tab.....	28
Color Tab.....	29
9.2 Windows Control Panel Settings.....	30
General Tab.....	30
Sharing Tab and Ports Tab.....	31
Advanced Tab.....	31
Color Management Tab.....	33
Security Tab.....	33
Device Settings Tab.....	34

10. Menu Functions.....	35
10.1 Operator Panel	35
10.2 How to Change the Settings—User	37
10.3 How to Change the Settings—Administrator	37
10.4 Menus	38
Information Menu	38
Usage Menu	39
Maintenance Menu.....	39
Network Menu.....	40
USB Menu.....	42
FX Emulation Menu.....	42
PPR Emulation Menu.....	43
PCL Emulation Menu	44
SYS Config Menu.....	45
Color Menu	47
Media Menu	48
Print Menu	51
Memory Menu	53
SYS Adjust Menu.....	53
Administrator Menu	54
Print Statistics Menu	57
11. Maintenance	58
11.1 Replacing Consumable Items.....	58
Toner Cartridge Replacement	58
Replacing the Transfer Belt Unit	62
Fuser Replacement.....	64
11.2 Cleaning.....	66
Unit Casing	66
LED Head.....	66
12. Troubleshooting.....	67
12.1 Major Printer Components and Paper Path	67
12.2 Paper Sensor Error Codes.....	68
12.3 Clearing Paper Jams.....	69
12.4 Dealing with Unsatisfactory Printing.....	75
13. Specifications.....	77

4. 5-Year DuraLabel Printer Warranty



Graphic Products' DuraLabel printers are warranted to be free from defects in materials and workmanship for a period of five (5) years from the date of purchase. Within this period, Graphic Products, Inc. will, at its sole option, repair or replace any components which fail in normal use. Such repairs or replacement will be made at no charge to the purchaser for parts or labor, provided that the purchaser shall be responsible for any transportation cost. This warranty does not cover loss, damages from accident, or equipment or parts which have been misused, altered, neglected, carelessly handled, used for purpose other than those for which the printer was manufactured, or damages resulting from unauthorized service.

4.1 Repairs

Repairs are warranted for 90 days. If the original warranty is still in effect, repaired units will remain under their original warranty or for 90 days from the date of service, whichever is longer.

4.2 Warranty Details

The warranties and remedies contained herein are exclusive and in lieu of all other warranties whether express, implied, or statutory, including any liability arising under any warranty of merchantability or fitness for a particular purpose, statutory or otherwise. This warranty gives the purchaser specific legal rights, which may vary from state to state.

In no event shall Graphic Products be liable for any incidental, special, indirect, or consequential damages, whether resulting from the use, misuse, or inability to use the product for any reason including defect. Some states do not allow the exclusion of incidental or consequential damages, so the above limitation may not apply in all areas.

Graphic Products retains the exclusive right within all warranty periods to repair, replace, or offer a full refund of the purchase price at its sole discretion. Such remedy shall be the purchaser's sole and exclusive remedy for any breach of warranty.

General maintenance and cleaning of the DuraLabel printer is the purchaser's responsibility and is not covered by the warranty. Expendable items or parts such as label supply and ribbon are not covered by this warranty.

NOTE: Specific preparation may be required before shipping. Please contact your Graphic Products representative to ensure correct return procedure: please call 800.788.5572 for details. Graphic Products, Inc. shall not be responsible for any loss or damages incurred during shipping.

5. Notes, Cautions, and Warnings

NOTE: A note provides additional information to supplement the main text.

⚠ CAUTION A caution provides additional information which, if ignored, may result in equipment malfunction or damage.

⚠ WARNING A warning provides additional information which, if ignored, may result in a risk of personal injury.

For the protection of your product, and in order to ensure that you benefit from its full functionality, this model has been designed to operate only with genuine DuraLabel Catalyst toner cartridges. Any other toner cartridge may not operate at all, even if it is described as “compatible”, and if it does work, your product's performance and print quality may be degraded.

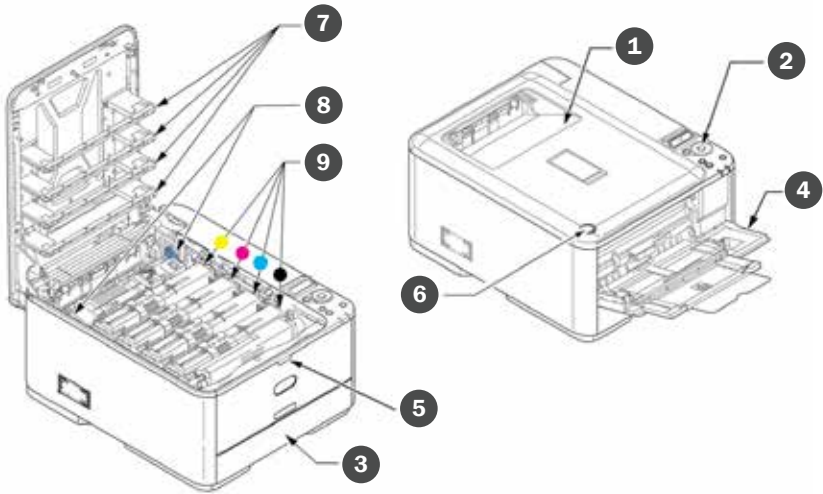
Use of any other label product aside from approved DuraLabel Catalyst Synthetic Supply may invalidate your warranty.

Specifications subject to change without notice. All trademarks acknowledged.

6. Getting Started

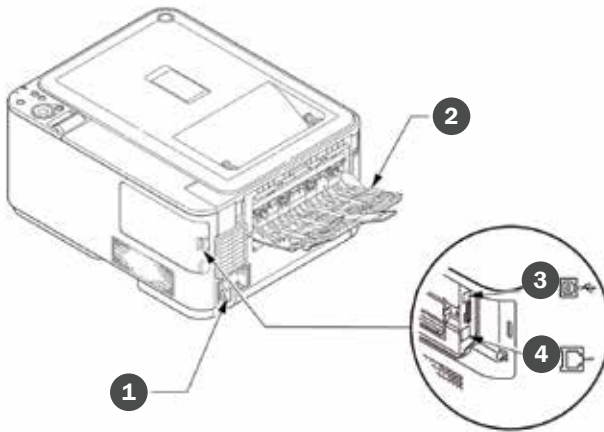
6.1 Overview

FRONT VIEW



1. Output stacker, face down. Standard printed copy delivery point
2. Operator panel. Menu driven operator controls and LCD panel
3. Paper tray. Standard paper tray. Holds up to 50 DuraLabel Catalyst Supply sheets; 250 8.5" x 11" sheets of 20 lb paper
4. Multi-purpose tray. Used for feeding 6.5" x 9.5" Duralabel Catalyst Supply sheets, heavier paper stocks, envelopes and other special media. Also for manual feeding of single sheets when required
5. Multi-purpose tray release recess
6. Top cover release button
7. LED heads
8. Fuser release levers
9. Toner cartridges (C,M,Y,K)

REAR VIEW



1. AC power socket
2. Rear, face up stacker
3. USB-B interface
4. Network interface*

*The Network Interface may have a protective “plug” which must be removed before connection can be made.

When the rear paper stacker is folded down, paper exits the printer through the rear of the printer and is stacked here face up. This is mainly used for heavy print media. When used in conjunction with the multi-purpose feed tray, the paper path through the printer is essentially straight. This avoids bending the paper around curves in the paper path.

6.2 Installing Catalyst

NOTE: Administrator rights may be necessary to install a printer and/or print driver on your system. If you are installing Catalyst as a network printer you will also need network settings and an ethernet cable to complete the installation process. Should you need assistance, please contact your Systems Administrator.

If you no longer have your Catalyst CD, you may also download drivers from DuraLabel.com.

Connect the power supply from the Catalyst to an electrical outlet and position Catalyst near an available USB port on your PC. Do not plug Catalyst into the USB port until instructed to do so.



Catalyst CD splash screen - select Install Driver option

Windows XP: Place the included Catalyst CD into your CD drive and wait a moment for the splash screen to appear. If the splash screen does not appear, double-click **My Computer** and double-click the CD drive or DVD drive. An **Open file - security warning** message may appear. Click Run to continue. Proceed to page 5.

Windows 7: Place the included Catalyst CD into your CD drive and wait a moment for the splash screen to appear. If the splash screen does not appear, click the Start menu and choose Computer. Double-click the CD drive or DVD drive. Proceed to next page.

Windows 8: Place the included Catalyst CD into your CD drive and wait a moment for the splash screen to appear. If the splash screen does not appear, from the Start screen choose Windows Explorer. In the Libraries window select Computer, then select the CD drive or DVD drive.

When the splash screen appears, select Install Driver at right. A User Account Control window may pop up, verifying that you want to allow the program to make changes. Select **Yes** to continue. Proceed to next page.

1. Click on **Install Driver**, then click **Next** in the Driver Wizard setup window that appears.



2. Click **I Agree** on the **DuraLabel Driver License Agreement** window that appears.



3. Select DuraLabel Catalyst and click **Next**.



4. Do not plug Catalyst into your PC yet. Click **Next**.



5. Choose the install location and click **Install**.



6. At this time, press the power button on Catalyst and plug its USB cable into your PC. Click **Next**.



7. Click **Finish** to close the Driver Setup wizard and proceed by letting Windows automatically install the driver.



8. Your PC will now install Catalyst. An icon with a moving green circle may appear at lower right. You may click for status or wait for it to complete.



- When device drivers have been installed, Windows will let you know that the process has completed. Click **Close**.



WINDOWS XP:

- Click on **Install Driver**, then click **Next** in the Driver Wizard setup window that appears.



- Click **I Agree** on the **DuraLabel Driver License Agreement** window that appears.



- Select **DuraLabel Catalyst** and click **Next**.



- Do not plug Catalyst into your PC yet. Click **Next**.



5. Choose the install location and click **Install**.



6. At this time, press the power button on Catalyst and plug its USB cable into your PC. Click **Next**.



7. Click **Finish** to close the Driver Setup wizard and proceed by using the following instructions to step through the Found New Hardware wizard.



8. **Found New Hardware Wizard** will appear. Select **No, not this time** and click **Next**.



9. Select **Install the software automatically (Recommended)** and click **Next**.



10. Windows searches for driver files. A magnifying glass image will appear.



11. **Hardware Installation** window will appear; click **Continue Anyway**.



12. Click **Finish** to close the Found New Hardware wizard. Setup is now complete.



TO UNINSTALL THE CATALYST DRIVER:

Place the Catalyst CD into your CD drive and when the splash screen pops up, select Uninstall Driver.

If the CD splash screen does not appear:

Windows XP: Double-click My Computer and double-click the CD drive or DVD drive.

Windows 7: Click the Start menu and choose Computer. Double-click the CD drive or DVD drive.

Windows 8: From the Start screen choose Windows Explorer. In the Libraries window select Computer, then select the CD drive or DVD drive.

When the splash screen appears, select Uninstall Driver. (In Windows 8 a User Account Control window may pop up, verifying that you want to allow the program to make changes. Select **Yes** to continue.)

You may also access the uninstall options via your Start menu, **Programs** menu (Windows XP) or **All Programs** menu (Windows 7). Go to the **DLCATA** folder and select **Uninstall**. In Windows 8, from Start screen select **Windows Explorer**. In the Libraries window select **Computer** at left then choose C drive. Select **DLCATA** folder and select **Uninstall**.

The **DuraLabel Driver Uninstall Wizard** will appear. Click **Next**.



Click **Uninstall**. This will remove the Catalyst driver from your system.

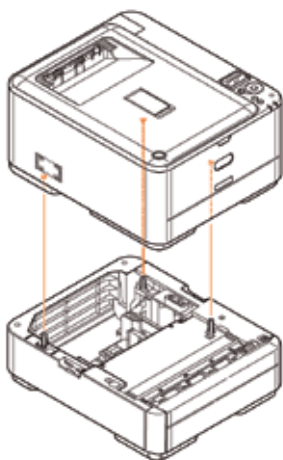


Click **Finish**. The Catalyst driver has been removed from your system.

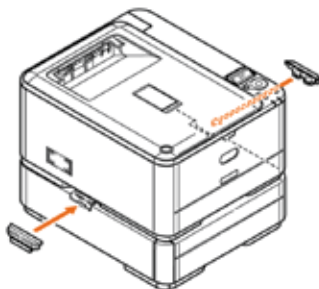


6.3 Installing Paper Tray 2

1. Turn the printer off and disconnect the AC power cable.



2. Place additional paper tray on desired location.
3. Observing safety rules for lifting and, using locating guides, place printer on top of the additional paper tray.
4. Fit retaining clips as shown.



5. Re-connect the AC power cable and turn the printer ON.

6.4 Energy Saving Settings

POWER SAVE MODE

If you do not use the machine for a while, it will enter power save mode to control the power consumption of the device. To cancel or initiate power save mode, press the **Power Save** button on the control panel. The **Power Save** button illuminates while in Power Save Mode.

NOTE: By default, the time interval to enter power save mode is set to 30 minutes. You can change the time interval by pressing the **Setting** button on the control panel. Then select **Sys Config Menu > Power Save Time**.

SLEEP MODE

Your machine transitions from power save mode to sleep mode after a set period of time. In sleep mode the power consumption of the device is minimal. The **Power Save** button blinks while in sleep mode.

NOTE:

- The machine will not enter sleep mode if an error occurs and the machine requires attention.
 - By default, the time interval to enter sleep mode is set to 10 minutes. You can change the time interval by pressing the **Setting** button on the control panel. Then select **Sys Config Menu > Sleep Time**.
 - It will automatically switch from Sleep Mode to Power Save Mode. In a network environment with a large number of packets flows, your computer may respond by automatically switching from Sleep mode to Power Save Mode. After a period of time has elapsed, the computer will automatically enter into Sleep Mode.
-

RETURNING TO STANDBY MODE

To return the machine to standby mode from power save or sleep mode, press the **Power Save** button on the control panel.

NOTE: When your machine receives a print job, it automatically returns to standby mode.

7. Paper Recommendations

Your printer will handle a variety of print media, including a range of paper weights and sizes, labels and envelopes. This section provides general advice on choice of media, and explains how to use each type.

The best performance is obtained when using certified DuraLabel Catalyst Synthetic Supply or standard 19-24 lb paper designed for use in copiers and laser printers.

Use of heavily embossed or very rough textured paper is not recommended.

Pre-printed stationery can be used, but its ink must be very dry so it will not offset when exposed to the Catalyst's high fuser temperatures.

ENVELOPES

⚠ CAUTION Envelopes should be free from twist, curl or other deformations. They should also be of the rectangular flap type, with glue that remains intact when subjected to hot roll pressure fusing used in this type of printer. Window envelopes are not suitable.

LABELS

⚠ CAUTION Labels should also be of the type recommended for use in the DuraLabel Catalyst.

7.1 Cassette Trays

If both trays contain the same size stock, Catalyst will by default pull from Tray 1 (upper tray), then Tray 2 (lower tray) if Tray 1 is empty. It will only pull from the multi-purpose tray when print settings specify this or if all other trays are empty. You can adjust these settings if different behavior is desired (see "Printer Features" setting in the "Advanced Options" section).

7.2 Multi-Purpose Tray

The multi-purpose tray can handle the same sizes as the cassette trays but in weights up to 60 lb. For very heavy paper stock use the face up (rear) paper stacker. This ensures that the paper path through the printer is almost straight.

The multi-purpose tray can feed paper widths from 3" to 8.5" and lengths from 5" to 52" (banner printing).

For paper lengths exceeding 14" use paper stock between 24-34 lb and the face up (rear) paper stacker.

Use the multi-purpose tray for printing on envelopes. Up to 10 envelopes can be loaded at one time, subject to a maximum stacking depth of .4".

7.3 Face Down Stacker

The face down stacker on the top of the printer can hold up to 150 sheets of 20 lb standard paper, and can handle paper stocks up to 50 lb.

Pages printed in reading order (page 1 first) will be sorted in reading order (last page on top, facing down).

The number of sheets that can be stacked on the face down stacker may vary depending on environment.

7.4 Face Up Stacker

When required for use, the face up stacker at the rear of the printer should be opened and the tray extension pulled out. In this condition paper will exit via this path, regardless of driver settings.

The face up stacker can hold up to 100 sheets of 20 lb standard paper, and can handle stocks up to 60 lb.

Always use this stacker and the multi-purpose feeder for paper stocks heavier than 50 lb.

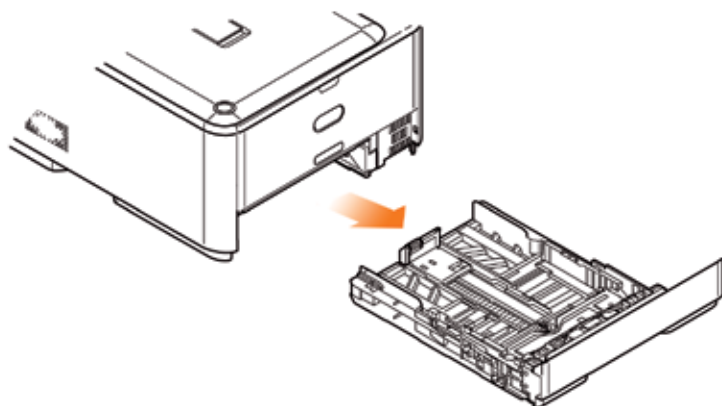
7.5 Duplexing

Automatic two-sided printing is available for the same range of paper sizes as Tray 2 (i.e. all cassette sizes except A6), using paper stocks from 17-50 lb.

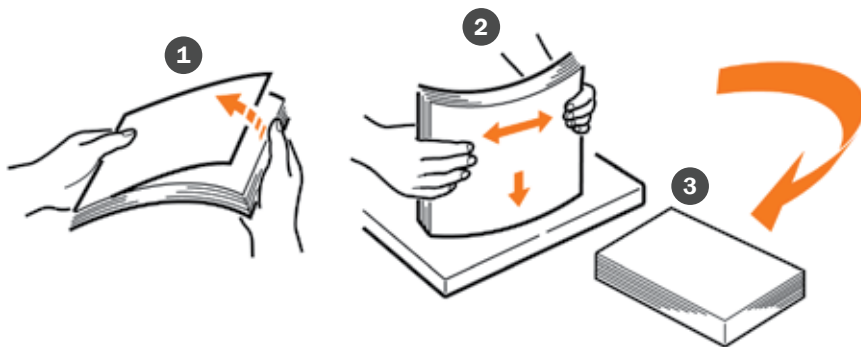
8. Loading Paper

8.1 Cassette Trays

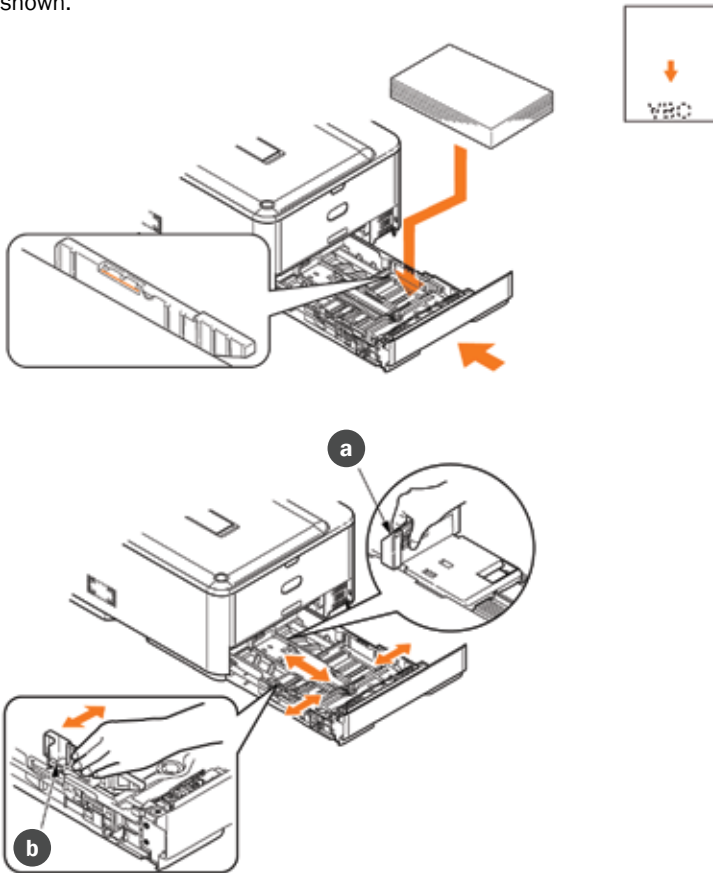
1. Remove the paper tray from the printer.



2. Fan the paper to be loaded at the edges (1) and in the middle (2) to ensure that all sheets are properly separated, then gently tap the edges of the stack on a flat surface to make it flush again (3).



3. Load paper (letterhead face down and top edge towards the front of the printer), as shown.



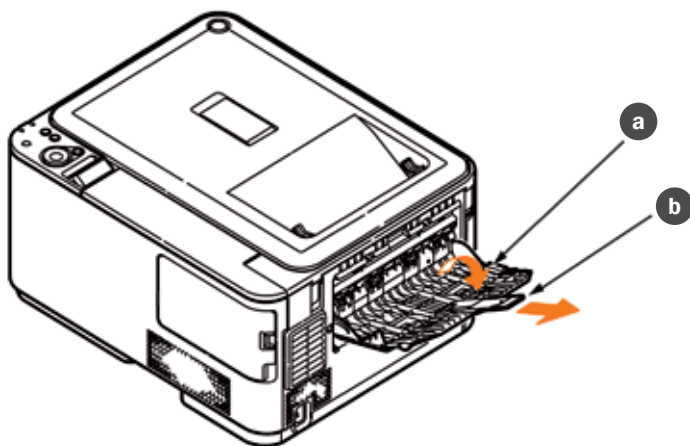
4. Adjust the rear stopper (a) and paper guides (b) as tight as possible to the size of paper being used.
5. Close the paper tray gently.

To prevent paper jams:

- Do not leave space between the paper and the guides and rear stopper.
- Do not overfill the paper tray. Capacity depends on the type of paper stock.
- Do not load damaged paper.
- Do not load paper of different sizes or types at the same time.
- Close the paper tray gently.
- Do not pull the paper tray out during printing (except as described in the following note for Tray 2).

NOTE:

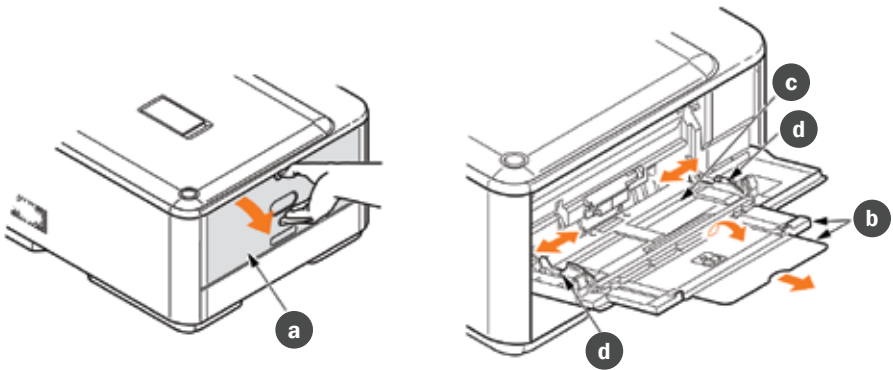
- If you have two trays and you are printing from the Tray 1, you can pull out the Tray 2 during printing to reload it. However, if you are printing from the Tray 2, do not pull out the Tray 1. This will cause a paper jam.
- For face down printing, make sure the face up (rear) stacker (a) is closed (the paper exits from the top of the printer). Stacking capacity is approximately 150 sheets, depending on paper weight.
- For face up printing, make sure the face up (rear) stacker (a) is open and the paper support (b) is extended. Paper is stacked in reverse order and tray capacity is approximately 100 sheets, depending on paper weight.
- Always use the face up (rear) stacker for heavy paper (card stock, etc.).



CAUTION Do not open or close the rear paper exit while printing as it may result in a paper jam.

8.2 Multi-purpose Tray

1. Open the multi-purpose tray (a).
2. Fold out the paper supports (b).



3. Press gently down on the paper platform (c) to ensure it is latched down.
4. Load the paper and adjust the paper guides (d) to the size of paper being used.
 - For single-sided printing on letterhead load the paper into the multi-purpose tray with pre-printed side up and top edge into the printer.
 - For two-sided (duplex) printing on letterhead load the paper with pre-printed side down and top edge away from the printer.
 - Envelopes should be loaded face up with top edge to the left and short edge into the printer. Do not select duplex printing on envelopes.
 - Do not exceed the paper capacity of about 100 sheets or 10 envelopes. Maximum stacking depth is .4".
5. Press the tray latch button inwards to release the paper platform, so that the paper is lifted and gripped in place.
6. Set the correct paper size for the multi-purpose tray in the Media Menu (see "Media menu" in "10.4 Menus" section).

9. Printing Settings in Windows

Your printer’s operator panel menus provide access to many options.

The Windows printer driver also contains settings for many of these items. Where items in the printer driver are the same as those in the operator panel menus, and you print documents from Windows, the settings in the Windows printer driver will override those items in the operator panel menus.

The illustrations in this chapter show Windows 7. Other Windows versions may appear slightly different, but the same settings are available.

9.1 Standard Print Settings

When you choose to print your document from a Windows application program a print dialog box appears. This dialog usually specifies the name of the printer on which you will print your document. Next to the printer name is a **Properties** button.

When you click Properties a new window opens which contains commonly-used print settings. Your initial print window may differ from what is shown, as different programs sometimes display a customized print window with additional program-specific settings. All standard settings will be available to you regardless of the appearance of this window.

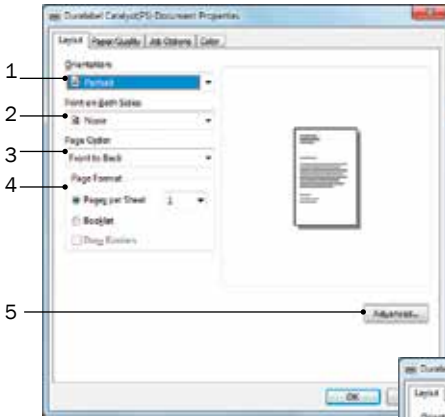


Print window

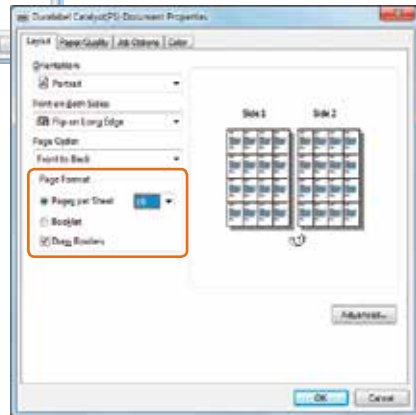
Settings you change here will usually only be retained for as long as that program is open. If you wish to change default settings that apply to all files printed from your computer to Catalyst, this can be done through Catalyst settings in Windows. (See “Windows Control Panel Settings”.) To change Catalyst settings for all users, some settings can be changed via the Catalyst panel (see “Menu Functions”) or contact your Systems Administrator.

If default settings may not work for your print job, click **Properties** on the print window. Print properties are divided into four subcategories: Layout, Paper/Quality, Job Options, and Color.

LAYOUT TAB



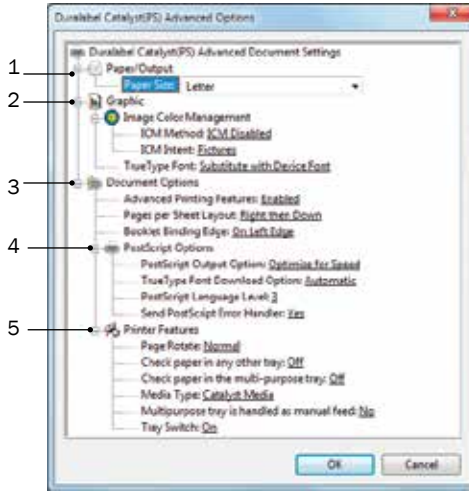
Setup tab



Page Format - print multiple pages per sheet

1. **Orientation:** can be set to either Portrait (tall) or Landscape (wide)
2. **Print on Both Sides:** lets you choose the orientation of the reverse side, if printing two-sided
3. **Page Order:** lets you choose which order to print your documents or labels
4. **Page Format:** lets you print multiple pages on a single page. This option will automatically reduce page size and lay out the document as shown to the right of the Page Format setting. You can choose to print up to 16 pages per sheet (two-sided if printing to paper), with or without borders. You can also print the document as a booklet
5. **Advanced:** offers advanced options (see next section)

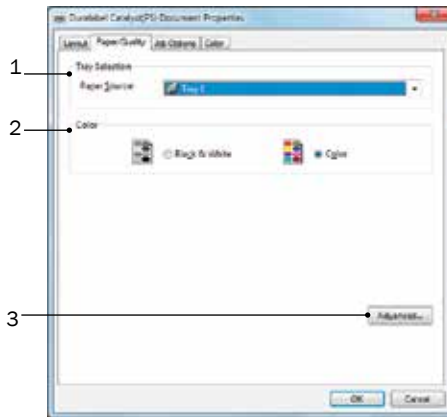
ADVANCED OPTIONS



Advanced Options

1. **Paper Size:** Choose paper size from a drop-down list
2. **Graphic:** ICM is a color matching system which adjusts colors to make them more accurately represent your document. Selecting this setting may result in a slower printing speed
TrueType Font: Substitute with Device Font will print documents faster by substituting equivalent printer fonts if a document font is unavailable. (Font substitutions are already set but if you prefer to choose your own, see “Font Substitution Table” in Device Settings tab.) If unexpected characters print, change this setting to **Download as Softfont** which will download the document fonts to the printer
3. **Document Options: Advanced Printing Features** allows access to advanced operations
Pages Per Sheet Layout and **Booklet Binding Edge** impact the layout of items described in the Page Format setting (setting #4 in the “Layout tab” section)
4. **Postscript Options:** These options can be adjusted if some characters or fonts are not printing as expected
5. **Printer Features:** These settings affect which trays Catalyst will pull media from. By default it will pull from Tray 1 (upper tray), then Tray 2 (lower tray) if Tray 1 is empty. It will only pull from the multi-purpose tray when print settings specify this. (This is covered in the next section.) You can adjust these settings if different behavior is desired. You can also set the **Media Type** to thinner or thicker if printer is jamming frequently or toner is not adhering well to media

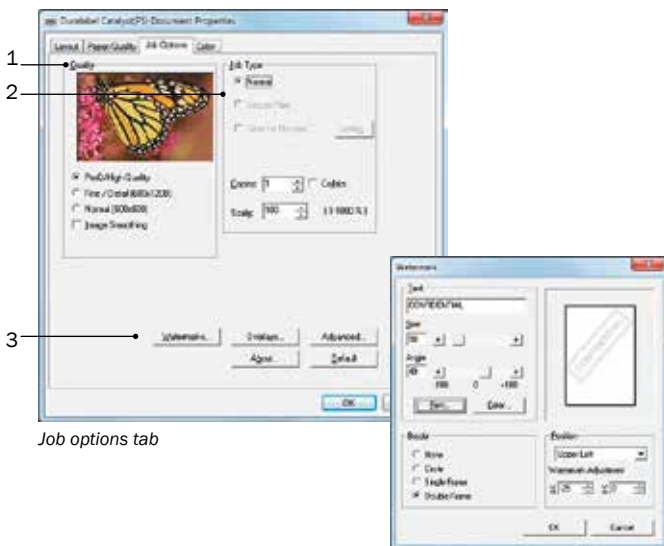
PAPER/QUALITY TAB



Paper/Quality tab

1. **Paper Source:** The default setting is Tray 1 (upper tray). This is the preferred tray for 8.5" x 11" label stock. Plain paper should be placed in Tray 1 or Tray 2 (lower tray). 6.5" x 9.5" Catalyst label stock must be placed in the multi-purpose tray and this setting must be selected from the Paper Source drop-down when printing. For more information on loading stock into trays, see "Loading Paper"
2. **Color:** If you prefer your document to print in black/white, this can be changed here
3. **Advanced:** offers advanced settings (see "Advanced Options" setting in the "Layout tab" section)

JOB OPTIONS TAB



Job options tab

Setting a watermark

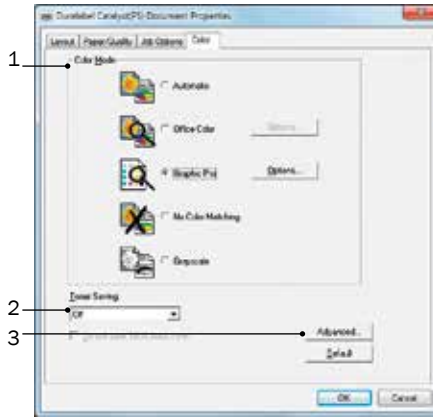
1. **Quality:** this setting adjusts the amount of toner that is placed onto the print. It can be adjusted for fine lines or detailed work
2. **Job Type:** this setting allows you to set the number of copies or scaling size of a print job
3. **Other options: Watermarks or Overlays** lets you create an automatic watermark or postscript form overlay to be placed over printed items

Advanced lets you print as a mirror image of the document, change line detail, or run a maintenance cycle prior to printing

About shows the current printer driver version and PPD version in use

Default restores default settings to anything previously selected within this tab

COLOR TAB



Color tab

1. **Color mode:** lets you adjust color matching options, such as switching to CMYK or setting colors to match a monitor or digital camera
 2. **Toner Saving:** this setting decreases the density of toner placed on a print
 3. **Other options: Advanced** lets you print color separations and set other advanced color options
- Default** restores default settings to anything previously selected within this tab

9.2 Windows Control Panel Settings

If you wish to change default settings that apply to all files printed from your computer to Catalyst, this can be done through Catalyst settings in Windows. If you are not an Administrator, these settings may only apply when you are logged into the computer. To change Catalyst settings for all users, some settings can be changed via the Catalyst panel (see “Menu Functions”) or contact your Systems Administrator.

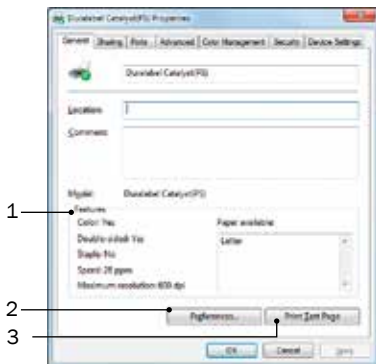
Accessing Catalyst settings through the Windows Control Panel offers you a more extensive range of settings than what is typically shown while printing from within a program. Altered settings will be retained even after rebooting.

In Windows XP: click Start, then Control Panel, then choose Printers and Other Hardware, and click Printers and Faxes. Double-click DuraLabel Catalyst. On menu click Printer, then choose Properties.

In Windows 7: click Start, then select Devices and Printers. Double-click DuraLabel Catalyst. On menu click Printer, then choose Properties.

In Windows 8: swipe from the right side of the screen and touch Settings, then touch Change PC Settings. Choose PC and Devices, then touch Devices. Touch DuraLabel Catalyst.

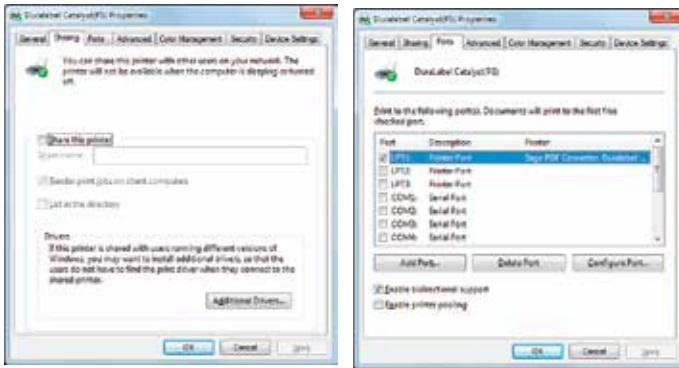
GENERAL TAB



General tab

1. This area lists some of the main features of your printer.
2. This button opens the same windows as described earlier for items which can be set from within application programs. Changes you make here, however, will become the new default settings for all Windows applications.
3. This button prints a test page to ensure that your printer is working.

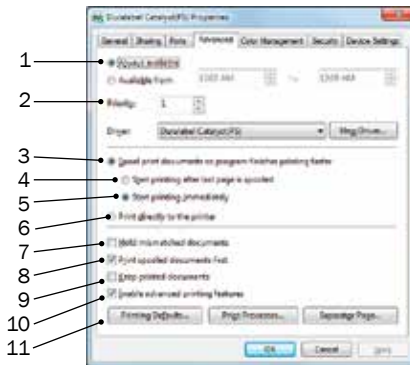
SHARING TAB AND PORTS TAB



Sharing and Ports tab

These settings should only be changed by a Systems Administrator and may be disabled (greyed out) by default

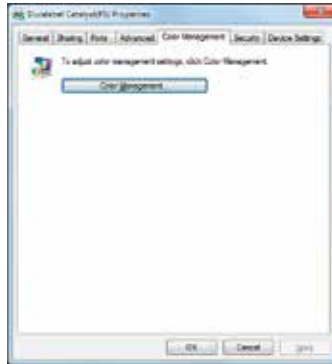
ADVANCED TAB



1. You can specify which times of day your printer will be available.
2. Indicates current priority, from 1 (lowest) to 99 (highest). Highest priority documents will print first.
3. Specifies that documents should be spooled (stored in a special print file) before being printed. The document is then printed in the background, allowing your application program to become available more quickly.

- 4.** This specifies that printing should not start until the last page has been spooled. If your application program needs a lot of time for further computation in the middle of printing, causing the print job to pause for more than a short period, the printer could prematurely assume that the document has finished. Selecting this option would prevent that situation, but printing will be completed a little later, as the start is delayed.
- 5.** This is the opposite choice to the one above. Printing starts as soon as possible after the document begins spooling.
- 6.** This specifies that the document should not be spooled, but printed directly. Your application will not normally be ready for further use until the print job is complete. This requires less disk space on your computer, since there is no spool file.
- 7.** Directs the spooler to check the document setup and match it to the printer setup before sending the document to print. If a mismatch is detected, the document is held in the print queue and does not print until the printer setup is changed and the document restarted from the print queue. Mismatched documents in the queue will not prevent correctly matched documents from printing.
- 8.** Specifies that the spooler should favour documents which have completed spooling when deciding which document to print next, even if completed documents are lower priority than documents which are still spooling. If no documents have completed spooling, the spooler will favour larger spooling documents over shorter ones. Use this option if you want to maximise printer efficiency. When this option is disabled the spooler chooses documents based only on their priority settings.
- 9.** Specifies that the spooler should not delete documents after they are completed. This allows documents to be re submitted to the printer from the spooler instead of printing again from the application program. If you use this option frequently it will require large amounts of disk space on your computer.
- 10.** Specifies whether advanced features, such as booklet printing, page order and pages per sheet, are available, depending on your printer. For normal printing keep this option enabled. If compatibility problems occur you can disable the feature. However, these advanced options may then not be available, even though the hardware might support them.
- 11.** This button provides access to the same setup windows as when printing from applications. Changes made via the Windows Control Panel become the Windows default settings.

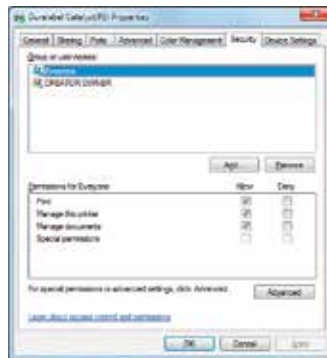
COLOR MANAGEMENT TAB



Color Management tab

Color Management allows the Catalyst to sync its color settings with your monitor or a program that offers color management. You may also set printing defaults which are optimized for a specific rendering intent such as photography, charts, or documents with fine lines or small print.

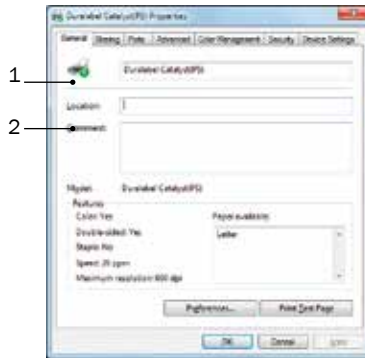
SECURITY TAB



Security tab

These settings should only be changed by a Systems Administrator and may be disabled (greyed out) by default

DEVICE SETTINGS TAB



Device Settings tab

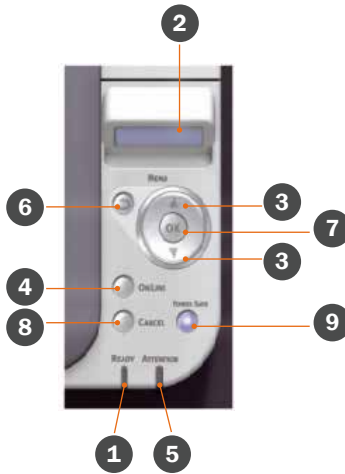
1. **Form to Tray Assignment:** if one tray will be dedicated to a certain document size, this can be set as a default
2. **Font Substitution Table:** this setting allows you to override the printer’s default font substitutions. For more information see “TrueType Font” in Advanced Options. Note that these substitutions will only apply to print jobs sent from this computer unless a Systems Administrator sets up substitutions.

The other options are designed for Systems Administrators to edit should users encounter printing errors

10. Menu Functions

This section lists the menus accessed via the controls on the printer's operator panel and displayed in the LCD window.

10.1 Operator Panel



1. READY LED

- ON: Ready to receive data.
- BLINKING: Processing data.
- OFF: Offline.

2. DISPLAY

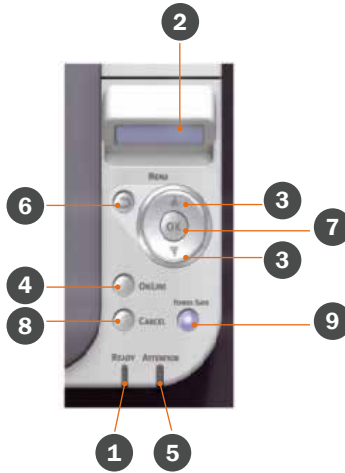
- Displays the printer status and any error messages.

3. MENU Buttons

- In the ONLINE or OFFLINE mode: enters the Menu mode.
- In the Menu mode: forwards or reverses the menu item displayed.
- Press for 2 secs. or longer to fast forward or reverse.

4. ON LINE Button

- Switches between ONLINE and OFFLINE.
- Exits the menu and goes ONLINE when pressed in the Menu mode. Forces printing on the paper currently loaded when pressed with "WRONG PAPER" or "WRONG PAPER SIZE" displayed.



5. ATTENTION LED

- ON: A warning occurs. Printing may be possible (e.g low toner).
- BLINKING: An error occurs. Printing not possible (e.g. toner empty).
- OFF: Normal condition.

6. BACK Button

- Returns to the previous higher level menu item

7. OK Button

- In the ONLINE or OFFLINE mode: enters the Menu mode.
- In the Menu mode: determines the setting selected.

8. CANCEL Button

- Deletes the data being printed or received when pressed for two seconds or longer.
- Deletes the data when pressed for two seconds or longer when WRONG PAPER SIZE, RUN OUT OF PAPER, TRAY 1 IS OPEN, or TRAY 1 IS NOT FOUND is displayed.
- Exits the menu and goes ONLINE when pressed in the Menu mode.

9. POWER SAVE Button & LED

- Pressing this button switches the machine into power save mode or wakes the machine up from power save mode.
- ON: Power save state.
- BLINKING: Sleep state.
- OFF: When machine is ready to print or powered off.

10.2 How to Change the Settings—User

It should be noted that many of these settings can be, and often are, overridden by settings in the Windows printer drivers. However, several of the driver settings can be set to “Printer Setting”, which will then default to the settings entered in these printer menus.

Where applicable, factory default settings are shown in bold type in the following tables.

In the normal operating condition, known as “standby,” the printer’s LCD window will show “ONLINE.” In this condition, to enter the menu system, press the up and down Menu buttons on the operator panel to move up and down through the list of menus until the menu you wish to view is displayed. Then proceed as follows:

1. Press **OK** to enter the menu.
2. Use the **up** and **down** MENU buttons on the control panel to scroll through the menus. When the item you want to change is displayed, press **OK** to view the submenu for that item.
3. Use the **up** and **down** MENU buttons to move up and down through the sub-menu items. When the item you want to change is displayed press **OK** to display the setting.
4. Use the **up** and **down** MENU buttons to move up and down through the available settings for the sub-menu item. When the item you want to change is displayed press **OK** to display the setting. An asterisk (*) will appear next to the setting, indicating that this setting is currently in effect.
5. Do one of the following:
 - Press **BACK** again to move up to the list of menus;
 - or...
 - Press **ON LINE** or **CANCEL** to exit from the menu system and return to standby.

10.3 How to Change the Settings—Administrator

You can set whether to ENABLE or DISABLE each category in the user menu.

Disabled categories are not displayed in the User’s menu. Only a system administrator can change these settings.

1. Turn **OFF** the printer.
2. Turn **ON** the printer while pressing the OK button. When **ADMIN MENU** appears, take your finger off the button.
3. Press the **OK** button.

4. At the Enter Password prompt, enter the Admin password:
 - a. Using the **up** and **down** MENU buttons, scroll to the required letter/digit.
 - b. Press the **OK** button to input and move to the next letter/digit.
 - c. Repeat steps (a) and (b) until all letters/digits are entered.

Enter your 6 to 12 digit password.

(The default password is aaaaaa).
5. Press the **OK** button.
6. Press the **up** and **down** MENU button until the “category” you want to change is displayed.
7. Press the **OK** button.
8. Press the **up** and **down** MENU button until the “item” you want to change is displayed.
9. Press the **OK** button.
10. Using the **up** and **down** MENU button, identify the parameter as required.
11. Press the **OK** button to enter an asterisk (*) on the right side of the setting selected.
12. Press the **ON LINE** button to switch to online. The machine will automatically reboot.

10.4 Menus

NOTE: This guide is written to cover a number of models and as such may reference menu items or features that your machine does not have installed or does not support.

INFORMATION MENU

This menu provides a quick method of listing various items stored within the printer.

ITEM	ACTION	EXPLANATION
PRINT MENU MAP	EXECUTE	Prints complete menu listing with current settings shown.
COLOR PROF LIST	EXECUTE	Prints a list of stored color profiles.
USAGE REPORT	EXECUTE	Prints a list of color and mono pages printed.
PRINT ERROR LOG	EXECUTE	Prints a list of all errors and warnings experienced.
PRINT FX FONT	EXECUTE	Prints complete list of all internal Epson FX emulation fonts, including any downloaded to flash memory.
DEMO1	EXECUTE	Prints demonstration page containing graphics and text in color and monochrome.
PRINT PPR FONT	EXECUTE	Prints complete list of all internal IBM ProPrinter III XL emulation fonts, including any downloaded to flash memory.

INFORMATION MENU (continued)

PRINT PSE FONT	EXECUTE	Prints complete list of all internal PostScript emulation fonts.
PRINT PCL FONT	EXECUTE	Prints complete list of all internal PCL fonts plus those stored in ROM (slot 0), flash memory.
PRINT FILE LIST	EXECUTE	Prints a list of overlays, macros, fonts and other files stored in memory
NETWORK	EXECUTE	Prints Network configuration information.

USAGE MENU

This menu is for information only, and provides an indication of total usage of the printer and the expected life left in its consumable items. This is particularly useful if you do not have a full set of replacement consumables to hand and you need to know how soon you will need them.

ITEM	EXPLANATION
TRAY1 COUNT	The total number of pages fed from tray 1.
K TONER (n.nK) REMAINING C TONER (n.nK) REMAINING M TONER (n.nK) REMAINING Y TONER (n.nK) REMAINING	Cartridge size and current toner level.
FUSER LIFE REMAINING	Percentage of fuser life remaining.
BELT LIFE REMAINING	Percentage of belt life remaining.
DRUM UNIT LIFE REMAINING	Percentage of image drum life remaining.
MP TRAY COUNT	The total number of pages fed from the multi-purpose tray.
TRAY2 COUNT	The total number of pages fed from tray 2 (if fitted).

MAINTENANCE MENU

This menu provides access to various printer maintenance functions.

ITEM	SETTINGS	EXPLANATION
MENU RESET	EXECUTE	Resets menus to default settings.
BG SETTING	-3~0~+3	Sets a correction value for dark-colored paper printing, to correct print variations caused by variations in temperature and humidity or in print density/frequency.
SMR SETTING	-3~0~+3	Sets a correction value for uneven print quality, to correct print variations caused by variations in temperature and humidity or in print density/frequency.
PAPER COLOR SET	-2~0~+2	As above, but for color printing.
PAPER BLACK SET	-2~0~+2	Used for small adjustments when you experience faded print or light specks / streaking in monochrome printing on white paper. Select a higher value to reduce fading, or a lower value to reduce specks or streaking in high density print areas.

MAINTENANCE MENU (continued)

ITEM	SETTINGS	EXPLANATION
AUTO PW OFF	ENABLE AUTO CONFIG DISABLE	<p>ENABLE: When the printer is not used for a period of time, it turns off the power automatically.</p> <p>AUTO CONFIG: Auto power off is enabled, however, the printer will not turn off the power under the following conditions:</p> <ul style="list-style-type: none"> ◦ An Ethernet cable is plugged to the network interface connection. <p>Note: The default setting varies depending on the sales area.</p>
SLEEP	ENABLE / DISABLE	Sets Enable/Disable of Sleep Mode.
POWER SAVE	ENABLE / DISABLE	Enables or disables automatic power save mode. Delay before entering this mode is set in the SYSTEM CONFIGURATION menu.
SAVE MENU	EXECUTE	<p>Saves the current menu settings. The last menu executed is saved and the menu previously saved is overwritten and erased.</p> <p>When you press the OK button, the following confirmation message is displayed.</p> <p>ARE YOU SURE? YES/NO</p> <p>If you select NO, the display returns to the previous menu.</p> <p>If you select YES, the current menu settings are stored and the menu is exited.</p>

NETWORK MENU

This menu controls the operation of the printer's 10Base-T/100Base-TX network interface.

ITEM	SETTINGS	EXPLANATION
TCP/IP	ENABLE / DISABLE	Enables or disables this network protocol.
FACTORY DEFAULTS	EXECUTE	Reloads the settings present when the unit was setup by the manufacturer.
TCP ACK	TYPE 1 TYPE2	<p>This setting determines whether the network card in the Printer/MFP will acknowledge every TCP packet or whether it will delay it's acknowledgement until multiple packets have been received.</p> <p>When Type 1 is set the Printer/MFP will respond to every TCP packet with an ACK packet.</p> <p>When Type 2 is set the Printer/MFP will delay it's TCP ACK response.</p> <p>In most environments the default TCP ACK setting should be OK, however changing this setting may be beneficial when a connection problem (e.g your printing job incompletely terminates) occurs if it takes a long time to interpret/print your job.</p>

NETWORK MENU (continued)

ITEM	SETTINGS	EXPLANATION
HUB LINK SETTING	AUTO NEGOTIATE 100BASE-TX FULL 100BASE-TX HALF 10BASE-T FULL 10BASE-T HALF	Sets full or half duplex for communication via a network hub. When AUTO is set, negotiation is done automatically.
NETWORK SCALE	NORMAL / SMALL	Selects network size. When NORMAL is selected, printer can work effectively, even when connected to a HUB that has a spanning tree feature. However, printer start up time gets longer when computers are connected with two or three small LANs. When SMALL is selected, computers can cover from two or three small LANs to a large LAN, but may not work effectively when connected to a HUB that has a spanning tree feature.
SNMP	ENABLE / DISABLE	Enables or disables SNMP protocol.
IPSEC	ENABLE / DISABLE	Sets Enable/Disable of IPsec. Enable via the web. Enable: IPsec is available. Disable: IPsec is not available.
FTP	ENABLE / DISABLE	Enables or disables communication via FTP.
TELNET	ENABLE / DISABLE	Enables or disables Telnet config. facility.
WEB	ENABLE / DISABLE	Enables or disables Web config. facility.
GATEWAY ADDRESS	xxx.xxx.xxx.xxx	Current assigned gateway address. To change, proceed as above.
SUBNET MASK	xxx.xxx.xxx.xxx	Current assigned subnet mask. To change, proceed as above.
IPV4 ADDRESS	xxx.xxx.xxx.xxx	Current assigned IP address. To change, press OK and use Menu buttons to increment 1st octet, then press OK again to move on to next octet. When 4th octet has been set, press OK again to register new address.
IP ADDRESS	SET AUTO / MANUAL	Specifies whether IP address allocation is automatic (DHCP) or manually assigned.
ETHERTALK	ENABLE / DISABLE	Enables or disables this network protocol.
NETWARE	ENABLE / DISABLE	Enables or disables this network protocol.
NETBIOS OVER TCP	ENABLE / DISABLE	Sets Enable/Disable of NetBIOS over TCP protocol. Display Conditions: > TCP/IP should be enabled. > IP Version is not IPv6.
NETBEUI	ENABLE / DISABLE	Enables or disables this network protocol.

NETWORK MENU (continued)

ITEM	SETTINGS	EXPLANATION
IP VERSION	IP v4 IP v4+v6 IP v6	Sets up the IP version. Operates with IPv4 only (not valid with IPv6). Operates with both IPv4 and IPv6. Operates with IPv6 only (not valid with IPv4). From this stage, if IPv6 only is set from UI, for example Telnet, "IP v6" appears as the value of IP Version on the operation panel. "IP v6" will disappear from the value if "IP v4" or "IP v4+v6" is selected. Display Condition: TCP/IP should be enabled.

USB MENU

This menu controls the operation of the printer's USB data interface.

ITEM	SETTINGS	EXPLANATION
SOFT RESET	ENABLE / DISABLE	Enables or disables the SOFT RESET command.
SERIAL NUMBER	ENABLE / DISABLE	Specifies whether to ENABLE or DISABLE a USB serial number. The USB serial number is used to identify the USB device connected to your PC.
OFFLINE RECEIVE	ENABLE / DISABLE	Enables or disables this function. When set to Enable, the interface retains a receive possible state even when switching to Offline. Interface sends the BUSY signal only when the receive buffer is full or a service call occurs.
SPEED	12Mbps / 480Mbps	Selects the interface speed.

NOTE: When you have changed any settings in the USB MENU, turn the printer OFF, then ON again.

FX EMULATION

This menu controls settings effective when the printer is operating in FX emulation mode.

ITEM	SETTINGS	EXPLANATION
CHARACTER PITCH	10 CPI; 12 CPI; 17 CPI; 20 CPI; PROPORTIONAL	Specifies character pitch in this emulation.
TEXT HEIGHT	SAME DIFF	Sets the height of a character. SAME: Regardless of CPI, same height. DIFF: As CPI, character heights vary.
FIT TO LETTER	DISABLE ENABLE	Sets the printing mode that can fit print data, equivalent to 11 inches (66 lines), in the LETTER-size printable area.

FX EMULATION (continued)

LEFT MARGIN	0.0INCH ~ 1.0INCH	Specifies the distance of print from the left hand edge of the paper.
TOF POSITION	0.0INCH ~ 1.0INCH	Specifies the distance of print from the top edge of the paper.
FORM LENGTH	11 INCH 11.7 INCH 12 INCH	Specifies the length of paper.
LINE LENGTH	80 COLUMN; 136 COLUMN	Specifies the number of characters per line.
CR FUNCTION	CR / CR+LF	Selects whether a received carriage return character (ODh) also causes a line feed.
WHITE PAGE SKIP	OFF / ON	Selects whether blank pages are printed or not.
LINE PITCH	6 LPI; 8 LPI	Specifies the line spacing.
ZERO CHARACTER	NORMAL SLASHED	Sets the zero to be slashed or unslashed.
LETTER O STYLE	DISABLE ENABLE	Specifies the style that replaces 9BH with letter o and 9DH with a zero
SYMBOL SET	IBM-437 (Default Symbol Set only shown)	Specifies a symbol set.
CHARACTER SET	SET-1 SET-2	Specifies a character set.

PPR EMULATION

This menu controls settings effective when the printer is operating in PPR emulation mode.

ITEM	SETTINGS	EXPLANATION
CHARACTER PITCH	10 CPI; 12 CPI; 17 CPI; 20 CPI; PROPORTIONAL	Specifies character pitch in IBM PPR emulation.
TEXT HEIGHT	SAME DIFF	Sets the height of a character. SAME: Regardless of CPI, same height DIFF: As CPI, character heights vary.
FIT TO LETTER	DISABLE ENABLE	Sets the printing mode that can fit print data, equivalent to 11 inches (66 lines), in the LETTER-size printable area.
LEFT MARGIN	0.0INCH ~ 1.0INCH	Specifies the distance of print from the left hand edge of the paper.
TOF POSITION	0.0INCH ~ 1.0INCH	Specifies the distance of print from the top edge of the paper.
FORM LENGTH	11 INCH 11.7 INCH 12 INCH	Specifies the length of paper.

PPR EMULATION MENU (continued)

LINE LENGTH	80 COLUMN; 136 COLUMN	Specifies the number of characters per line.
LF FUNCTION	LF / LF+CR	Selects whether a received line feed character (0Ah) also causes a carriage return.
CR FUNCTION	CR / CR+LF	Selects whether a received carriage return character (0Dh) also causes a line feed.
WHITE PAGE SKIP	OFF / ON	Selects whether blank pages are printed or not.
LINE PITCH	6 LPI; 8 LPI	Specifies the line spacing.
ZERO CHARACTER	NORMAL SLASHED	Sets the zero to be slashed or unslashed.
LETTER O STYLE	DISABLE ENABLE	Specifies the style that replaces 9BH with letter o and 9DH with a zero
SYMBOL SET	IBM-437 (Default Symbol Set only shown)	Specifies a symbol set.
CHARACTER SET	SET-1 SET-2	Specifies a character set.
FONT CONDENSE	12CPI TO 20CPI 12CPI TO 12CPI	Specifies 12CPI pitch for Condense Mode.

PCL EMULATION

This menu controls settings effective when the printer is operating in PCL emulation mode.

ITEM	SETTINGS	EXPLANATION
FONT SOURCE	RESIDENT / RESIDENT2	Specifies the location of the PCL default font. Normally this will be INTERNAL unless additional fonts are installed in the expansion ROM slot or additional fonts have been downloaded to RAM as permanent fonts.
TRAY ID# MP TRAY TRAY 2	1 ~ 4 ~ 59 1 ~ 5 ~ 59	Sets the # to specify the MP tray for the paper feed destination command (ESC&I#H) in PCL5e emulation. Sets the # to specify Tray 2 for the paper feed destination command (ESC&I#H) in PCL5e emulation. (Displayed only if Tray 2 is installed).
PEN WIDTH ADJUST	ON/OFF	When minimum width is specified in PCL, sometimes a 1-dot line, looks broken. With PEN WIDTH Adjust set to ON, when the minimum width is specified, the line width will be emphasized so as to look wider than a 1-dot line. With PEN WIDTH Adjust set to OFF, the line will appear as before.
TRUE BLACK	OFF / ON	Selects whether black image data is printed using black toner (ON) or 100% CMY (OFF). (Valid in PCL emulation mode only.)
PRINT MARGIN NORMAL	1/5 INCH 1/6 INCH	Sets the non-printable page area. NORMAL is PCL compatible.

PCL EMULATION MENU (continued)

ITEM	SETTINGS	EXPLANATION
LF FUNCTION	LF / LF+CR	Selects whether a received line feed character (0Ah) also causes a carriage return.
CR FUNCTION	CR / CR+LF	Selects whether a received carriage return character (0Dh) also causes a line feed.
WHITE PAGE SKIP	OFF / ON	Selects whether blank pages are printed or not.
A4 PRINT WIDTH	78 COLUMN 80 COLUMN	Sets the number of columns subject to Auto LF with A4 paper in PCL. This is the value when Auto CR/LF Mode is set to OFF with the 10CPI character.
SYMBOL SET	PC-8 (Default Symbol Set only shown)	PCL symbol set. If the font source and number are changed to one which does not support the selected symbol set, this must be changed to an available symbol set for that font.
FONT PITCH	0.44CPI~ 10.00CPI~ 99.99CPI	Sets the width of the PCL default font in characters/inch (CPI). Default font is the fixed-pitch, scalable font. The value is displayed to the second decimal place Displayed only when the font selected in Font No. is fixed-spacing, scalable font.
FONT NO.	10 ~ 190	Sets the current default font number from the currently selected source.

SYS CONFIG MENU

This menu adjusts general printer settings to suit the way you prefer to work.

ITEM	SETTINGS	EXPLANATION
POW SAVE TIME	1 MIN 2 MIN 3 MIN 4 MIN 5 MIN 10 MIN 15 MIN 30 MIN 60 MIN 120 MIN	Adjusts the idling time before the printer automatically switches into power save mode. In this mode power consumption is reduced to a low level required to just keep the printer operating and ready to receive data. When a job is sent the printer will require a warm-up time of up to 1 minute before printing can begin.
ERROR REPORT	ON OFF	If ON, the printer will print error details when a PostScript Emulation error occurs.
JAM RECOVERY	ON OFF	Specifies whether the printer should perform jam recovery after a paper jam has occurred. If ON, the printer will attempt to re-print any pages lost due to a paper jam once the jam has been cleared.
LOW TONER	CONTINUE STOP	Specifies whether the printer should continue printing even after a low toner condition is detected.
WAIT TIMEOUT	5~40 SEC~300, OFF	Specifies how many seconds the printer will wait when received data pauses before forcing a page eject. In PostScript Emulation mode the job will be cancelled if timeout occurs.

SYS CONFIG MENU (continued)

ITEM	SETTINGS	EXPLANATION
MANUAL TIMEOUT	OFF 30 SEC 60 SEC	Specifies how many seconds the printer will wait for paper to be fed before cancelling the job.
AUTO CONTINUE	ON OFF	Determines whether or not the printer will automatically recover from a memory overflow condition.
CLRABLE WARNING	ONLINE JOB	When ONLINE, non-critical warnings, such as requests for a different paper size, can be cleared by pressing the ON LINE button. When set to JOB, they are cleared when the print job resumes.
NET PS-PROTOCOL	RAW ASCII	Selects PostScript data format for network port.
USB PS-PROTOCOL	RAW ASCII	Selects PostScript data format for USB port.
PERSONALITY	AUTO EMULATION PCL IBM PPR III XL EPSON FX PS3 EMULATION	This item selects which industry standard emulation your printer should use. When set to AUTO, incoming data is examined and the correct emulation is automatically selected each time a print job is received.
AUTO PW OFF TIME	1 HOUR 2 HOURS 3 HOURS 4 HOURS 8 HOURS 12 HOURS 18 HOURS 24 HOURS	Sets the time to switch from idle state to Off mode.
SLEEP TIME	1 MIN 2 MIN 3 MIN 4 MIN 5 MIN 10 MIN 15 MIN 30 MIN 60 MIN 120 MIN	Adjusts the power save time before the printer automatically switches into sleep mode.

COLOR MENU

The printer automatically adjusts color balance and density at appropriate intervals, optimizing the printed output for bright white paper viewed in natural daylight conditions. The items on this menu provide a means of changing the default settings for special or particularly difficult print jobs.

ITEM	SETTINGS	EXPLANATION
DENSITY CONTROL	AUTO MANUAL	If set to AUTO, image density will be automatically adjusted at power on, when a new image drum or toner cartridge is installed, and at intervals of 100, 300 and 500 drum counts. If a 500 drum count interval occurs during a print job it will occur at the end of that job, and will take up to 55 seconds. If set to manual, this adjustment will only be performed when initiated by the next menu item.
CMYK CONVERSION	ON OFF	Setting to "OFF" will simplify the conversion process of CMYK data, which will reduce the processing time. This setting is ignored when Ink Simulation function is used.
CMY100% DENSITY	DISABLE ENABLE	When enabled, black areas are produced using 100% C, M, and Y instead of black. This results in a glossier finish.
UCR	LOW MEDIUM HIGH	Selects limitation of the toner layer thickness. If paper curl occurs in dark printing, selecting MEDIUM or LIGHT sometimes helps reduce curl
INK SIMULATION	OFF SWOP EUROSCALE JAPAN	Selects from a range of industry standard color swatches.
C REG FINE AJST M REG FINE AJST Y REG FINE AJST	-3~0~+3 -3~0~+3 -3~0~+3	Performs fine adjustment of image timing in relation to the black image component.
AJST REGISTRATION	EXECUTE	Performs automatic color registration adjustment. Normally this is done on power on and when the top cover is opened and then closed. This process accurately aligns the cyan, magenta and yellow images to the black image.
C DARKNESS M DARKNESS Y DARKNESS K DARKNESS	-3~0~+3 -3~0~+3 -3~0~+3 -3~0~+3	Adjusts darkness of each color component (cyan, magenta, yellow and black). Normal setting is 0.

COLOR MENU (continued)

ITEM	SETTINGS	EXPLANATION
C HIGHLIGHT	-3~0~~+3	Adjusts image density for each color component (cyan, magenta, yellow and black). Normal setting is 0.
C MID-TONE	-3~0~~+3	
C DARK	-3~0~~+3	
M HIGHLIGHT	-3~0~~+3	
M MID-TONE	-3~0~~+3	
M DARK	-3~0~~+3	
Y HIGHLIGHT	-3~0~~+3	
Y MID-TONE	-3~0~~+3	
Y DARK	-3~0~~+3	
K HIGHLIGHT	-3~0~~+3	
K MID-TONE	-3~0~~+3	
K DARK	-3~0~~+3	
COLOR TUNING	PRINT PATTERN	Selecting this item prints the color tuning pattern to help you adjust the color balance.
ADJUST DENSITY	EXECUTE	Selecting this will activate adjustment of the color density.

MEDIA MENU

This menu provides adjustment to suit a wide range of print media.

ITEM	SETTINGS	EXPLANATION
TRAY1 PAPERSIZE	A4 /A5/ A6/B5/LEGAL14/ LEGAL13.5/LEGAL13/ LETTER/EXECUTIVE 16K(184x260mm) 16K(195x270mm) 16K(197x273mm) CUSTOM HAGAKI	Selects the size of paper loaded in Tray 1 (upper tray if both trays installed). For CUSTOM setting see XDIMENSION and Y-DIMENSION in "Print menu" in "10.4 Menus" section.
UNIT OF MEASURE	INCH MILLIMETER	Selects the unit of measure. Note: The default setting varies depending on the sales area.
MPT MEDIAWEIGHT	LIGHT MEDIUM LIGHT MEDIUM HEAVY ULTRA HEAVY1 ULTRA HEAVY2	Selects the media weight to be fed from the multi-purpose tray.

MEDIA MENU (continued)

ITEM	SETTINGS	EXPLANATION
MPT MEDIATYPE	PLAIN LETTERHEAD LABELS BOND RECYCLED CARD STOCK ROUGH GLOSSY USER TYPE 1 USER TYPE 2 USER TYPE 3 USER TYPE 4 USER TYPE 5	Selects the type of media to be fed from the multi-purpose tray so that the printer can adjust its internal parameters to better accommodate the selected type of media. Note: USERTYPE _n are displayed only if registered in the host PC/Server.
MPT PAPERSIZE	A4 A5 A6 B5 LEGAL14 LEGAL13.5 LEGAL13 LETTER EXECUTIVE 16K(184x260mm) 16K(195x270mm) 16K(197x273mm) CUSTOM COM-9 ENVELOPE COM-10 ENVELOPE MONARCH ENV DL ENVELOPE C5 ENVELOPE HAGAKI OUFUKU HAGAKI NAGAGATA #3 NAGAGATA #4 YOUGATA #4 FUTO A4 INDEX CARD	Selects the size of paper to be fed from the multi-purpose tray. For CUSTOM setting see X-DIMENSION and Y-DIMENSION in "Print menu" in "10.4 Menus" section.
TRAY2MEDIaweIGHT	LIGHT MEDIUM LIGHT MEDIUM HEAVY ULTRA HEAVY1	Adjusts the printer for the weight of paper stock loaded in this tray (if installed).

MEDIA MENU (continued)

ITEM	SETTINGS	EXPLANATION
TRAY2 MEDIATYPE	PLAIN LETTERHEAD BOND RECYCLED CARD STOCK ROUGH GLOSSY USER TYPE 1 USER TYPE 2 USER TYPE 3 USER TYPE 4 USER TYPE 5	Selects the type of media loaded in this tray (if installed). This will help the printer to adjust its internal operating parameters, such as engine speed and fusing temperature, to better accommodate the media to be fed. For example, letterhead may benefit from a slightly lower fusing temperature to ensure that its ink does not offset. Note: USERTYPE _n are displayed only if registered in the host PC/Server.
TRAY2 PAPERSIZE	A4 /A5/ B5/LEGAL14/ LEGAL13.5/LEGAL13/ LETTER/EXECUTIVE 16K(184x260mm) 16K(195x270mm) 16K(197x273mm) CUSTOM	Selects the size of paper loaded in Tray 2 (lower) if installed. For CUSTOM setting see X-DIMENSION and Y-DIMENSION in "Print menu" in "10.4 Menus" section.
TRAY1MEDIaweIGHT	LIGHT MEDIUM LIGHT MEDIUM HEAVY ULTRA HEAVY1	Adjusts the printer for the weight of paper stock loaded in this tray.
TRAY1 MEDIATYPE	PLAIN LETTERHEAD BOND RECYCLED CARD STOCK ROUGH GLOSSY USERTYPE1 USERTYPE2 USERTYPE3 USERTYPE4 USERTYPE5	Selects the type of media loaded in this tray. This will help the printer to adjust its internal operating parameters, such as engine speed and fusing temperature, to better accommodate the media to be fed. For example, letterhead may benefit from a slightly lower fusing temperature to ensure that its ink does not offset. Note: USERTYPE _n are displayed only if registered in the host PC/Server.

PRINT MENU

This menu provides adjustment of various print job related functions.

ITEM	SETTINGS	EXPLANATION
COPIES	1-999	Enter the number of copies of a document to be printed from 1 to 999.
Y DIMENSION	127MILLIMETER (5.0INCH) ~ 279MILLIMETER (11.0INCH) ~ 297MILLIMETER (11.7INCH) ~ 1321MILLIMETER (52.0INCH)	Specifies paper length of Custom paper as a default value. Sets a paper size in the same direction as the paper run direction.
X DIMENSION	64MILLIMETER (2.5INCH) ~ 210MILLIMETER (8.3INCH) ~ 216MILLIMETER (8.5INCH)	Specifies paper width of Custom paper as a default value. Sets a paper size at right angles to the paper run direction.
EDIT SIZE	CASSETTE SIZE A4 /A5/ A6 / B5 LEGAL14 LEGAL13.5 LEGAL13 LETTER EXECUTIVE 16K(184x260mm) 16K(195x270mm) 16K(197x273mm) CUSTOM COM-9 ENVELOPE COM-10 ENVELOPE MONARCH ENV DL ENVELOPE C5 ENVELOPE HAGAKI OUFUKU HAGAKI NAGAGATA #3 NAGAGATA #4 YOUGATA #4 FUTO A4 INDEX CARD	Sets the size of the printable page area to match the size of paper in use. This is not the same as the physical paper size, which is always slightly larger. For dimensions of physical page sizes, see "Paper Recommendations" section in this guide.
LINES PER PAGE	5~60~64~128LINES	Sets the number of lines of text per page when raw text is received from systems other than Windows. The default for A4 portrait is 64, and for Letter is 60. - (PCL only)
ORIENTATION	PORTRAIT LANDSCAPE	Selects default page orientation between portrait (tall) and landscape (wide).

PRINT MENU (continued)

ITEM	SETTINGS	EXPLANATION
MONO-PRINT SPEED	AUTO COLOR SPEED NORMAL SPEED	Sets the monochrome print speed. Prints at the most appropriate speed for page process if Auto is set. Prints always at the color print speed if Color is set. Prints always at the monochrome print speed if Normal is set.
TONER SAVE COLOR	ALL EXCEPT 100% BLACK	Specify toner save for 100% black. All: Enables toner save for all colors. Except 100% Black: Disables toner save for 100% black.
TONER SAVE LEVEL	OFF LOW MIDDLE HIGH	Set the toner save level.
RESOLUTION	600DPI 600x1200DPI 600DPI M-LEVEL	Sets the default resolution for printing (dots per inch). 600x1200DPI uses more memory and requires more time to process, but prints at a higher quality.
OVERRIDE A4/LT	YES NO	If enabled, when the paper size of a job is set to A4 but there is no A4 set in the printer, if there is Letter paper in the printer, the job will be printed on Letter paper without requesting the user to fill the paper tray with A4 paper. Similarly, when the paper size of a job is set to Letter but there is no Letter set in the printer, if there is A4 paper in the printer, the job will be printed on A4 paper without requesting the user to fill the paper tray with Letter paper.
MEDIA CHECK	ENABLE DISABLE	Determines whether the printer check the size of paper loaded matches that required for the document sent to print.
MP TRAY USAGE	DO NOT USE WHEN MISMATCH	If a document to be printed demands a paper size not installed in the selected tray, the printer can automatically feed from the multi-purpose tray instead. If this function is not enabled, the printer will stop and request the correct size of paper to be loaded.
TRAY SEQUENCE	DOWN UP PAPER FEED TRAY	Determines tray sequence order when automatically switching.
AUTO TRAY SWITCH	ON OFF	If two trays contain identical paper, the printer can switch to an alternative source when the current tray runs out in the middle of a print job.
PAPER FEED	TRAY1 TRAY2 MP TRAY	Selects the default tray for paper feed, Tray 1 (upper), Tray 2 (lower, if installed) or MP Tray (multi-purpose tray).
DUPLEX LAST PAGE	SKIP BLANK PAGE ALWAYS PRINT	When Skip Blank Page is selected and a print job has an odd number of pages, the final page will be printed as Simplex. When Always Print is selected and the print job contains an odd number of pages, the final page will be printed as Duplex.
DUPLEX	ON OFF	Switches the Duplex (2 sided) function ON/OFF.

MEMORY MENU

Not displayed as default. This menu is displayed only when set to ENABLE in OP MENU of Administrator menu.

This menu sets the conditions of memory allocated to the buffer and resource.

ITEM	SETTINGS	EXPLANATION
RECEIVE BUF SIZE	AUTO 0.5MB 1MB 2MB 4MB 8MB 16MB 32MB	Sets the size of the receive buffer.
RESOURCE SAVE	AUTO OFF 0.5MB 1MB 2MB 4MB 8MB 16MB 32MB	Sets the size of the resource saving area

SYS ADJUST MENU

Not displayed as default. This menu is displayed only when set to ENABLE in OP MENU of Administrator menu.

ITEM	SETTINGS	EXPLANATION
X ADJUST	+2.00MILLIMETER ~ 0.00MILLIMETER ~ -2.00MILLIMETER	Adjusts the position of a whole print image in the direction perpendicular to the direction the paper runs, that is horizontally, in 0.25 mm increments. Any parts of the print image that are outside the printable area as a result of this shift will be cropped.
Y ADJUST	+2.00MILLIMETER ~ 0.00MILLIMETER ~ -2.00MILLIMETER	Adjusts the position of a whole print image in the direction the paper runs, that is vertically, in 0.25 mm increments. Any parts of the print image that are outside the printable area as a result of this shift will be cropped.
DUPLEX X	ADJUST +2.00MILLIMETER ~ 0.00MILLIMETER ~ -2.00MILLIMETER	When printing the reverse page of a duplex job, adjusts the position of the whole print image in the direction that is perpendicular to the direction the paper runs, that is horizontally, in 0.25 mm increments. Any parts of the print image that are outside the printable area as a result of this shift will be cropped.
DUPLEX Y	ADJUST +2.00MILLIMETER ~ 0.00MILLIMETER ~ -2.00MILLIMETER	When printing the reverse page of a duplex job, adjusts the position of the whole print image in the direction the paper runs, that is vertically, in 0.25 mm increments. Any parts of the print image that are outside the printable area as a result of this shift will be cropped.

SYS ADJUST MENU (continued)

DRUM CLEANING	ON OFF	Sets whether to rotate the drum in idle prior to printing in order to reduce any horizontal white lines. CAUTION: Each additional rotation will shorten the ID life by that amount.
HEX DUMP	EXECUTE	Prints out data received from the host PC in hexadecimal Dump. Turning off the power supply switch restores Normal Mode from HEX Dump Mode.

ADMINISTRATOR MENU

This menu should only be changed by the System Administrators. In order to gain access to this menu, follow the instructions in “10.3 How to change the settings - Administrator” section.

This menu is in ENGLISH only.

ITEM	SETTINGS	EXPLANATION
ENTER PASSWORD		xxxxxxxxxx Enter a password to gain entry to the Admin menu. Password should be from 6 to 12 digits of alpha/numeric characters (or mix) The default value is “aaaaaa”
OP MENU	ALL CATEGORY	ENABLE DISABLE Set up ENABLE/DISABLE condition for all categories in USERS MENU.
	PRINT JOBS MENU	ENABLE DISABLE Set up ENABLE/DISABLE condition for PRINT JOB MENU category. If DISABLE is selected, PRINT JOBS MENU category of USERS MENU will not appear. Display Condition: SD card must be installed.
	INFORMATION MENU	ENABLE DISABLE Set up ENABLE/DISABLE condition for INFORMATION MENU category. If DISABLE is selected, INFORMATION MENU category of USERS MENU will not appear.
	PRINT MENU	ENABLE DISABLE Set up ENABLE/DISABLE condition for PRINT MENU category. If DISABLE is selected, PRINT MENU category of USERS MENU will not appear.
	MEDIA MENU	ENABLE DISABLE Set up ENABLE/DISABLE condition for MEDIA MENU category. If DISABLE is selected, MEDIA MENU category of USERS MENU will not appear.
	COLOR MENU	ENABLE DISABLE Set up ENABLE/DISABLE condition for COLOR MENU category. If DISABLE is selected, COLOR MENU category of USERS MENU will not appear.
	SYS CONFIG MENU	ENABLE DISABLE Set up ENABLE/DISABLE condition for SYS.CONFIG MENU category. If DISABLE is selected, SYS.CONFIG MENU category of USERS MENU will not appear.

ADMINISTRATOR MENU (continued)

ITEM	SETTINGS	EXPLANATION	
OP MENU (cont.)	USB MENU	ENABLE DISABLE	Set up ENABLE/DISABLE condition for USB MENU category. If DISABLE is selected, USB MENU category of USERS MENU will not appear.
	NETWORK MENU	ENABLE DISABLE	Set up ENABLE/DISABLE condition for NETWORK MENU category. If DISABLE is selected, NETWORK MENU category of USERS MENU will not appear.
	MEMORY MENU	ENABLE DISABLE	Set up ENABLE/DISABLE condition for MEMORY MENU category. If DISABLE is selected, MEMORY MENU category of USERS MENU will not appear.
	SYS ADJUST MENU	ENABLE DISABLE	Set up ENABLE/DISABLE condition for SYS.ADJUST MENU category. If DISABLE is selected, SYS.ADJUST MENU category of USERS MENU will not appear.
	MAINTENANCE MENU	ENABLE DISABLE	Set up ENABLE/DISABLE condition for MAINTENANCE MENU category. If DISABLE is selected, MAINTENANCE MENU category of USERS MENU will not appear.
	USAGE MENU	ENABLE DISABLE	Set up ENABLE/DISABLE condition for USAGE MENU category. If DISABLE is selected, USAGE MENU category of USERS MENU will not appear.
	NEARLIFE STATUS	ENABLE DISABLE	Set LCD panel control at the time of near-life warning for drum, fuser and belt. Enable: Display a near-life warning. Disable: Do not display a near-life warning.
	LIFE WARNING	ENABLE DISABLE	If DISABLE is selected, the printer does not display life warning after cover opening and closing Display Condition: NEARLIFE STATUS is set to DISABLE.
CONFIG. MENU	NEARLIFE LED	ENABLE DISABLE	Enables/disables illumination of front panel LED when "near-end-of-life" warning of a toner, drum, fuser, or belt occurs. Attention LED is lit when setting is enabled, inhibited when disabled.
	ECO MODE	ON OFF	When ON, if the machine is in power save mode and you send a small print job (1 or 2 pages), the machine will print the job without warming the fuser to the "normal" operating temperature beforehand. When you change the setting and exit the Admin Menu, the machine will power cycle then the following message is displayed "PLEASE POWER OFF/ON". Switch the power off then turn the machine back on.

ADMINISTRATOR MENU (continued)

ITEM	SETTINGS	EXPLANATION	
CONFIG. MENU (cont.)	HIGH HUM. MODE	ON OFF	If moistened paper (*) is curled significantly after printing, change the setting to ON. After ON is selected, the warm-up time before printing may take a little longer. (*) Moistened paper means paper that has been left in a high humidity environment.
SECURITY MENU	JOB LIMITATION	OFF ENCRYPTED JOB	Job limitation mode control. Jobs other than specified ones are rejected.
LANGUAGE MENU	LANG INITIALIZE	EXECUTE	Initialise the message file loaded in FLASH MEMORY. If NO is selected, the machine will go back to the source menu. The procedure for clearing the disk will start immediately after the menu and machine reboot.
CHANGE PASSWORD	NEW PASSWORD	xxxxxxxxxx	Set a new password for entering the administrator's menu. Password should be from 6 to 12 digits of alpha/numeric characters (or mix). The default value is "aaaaaa" The printer will restart after the ADMIN MENU.
	VERIFY PASSWORD	xxxxxxxxxx	Verification of above.

PRINT STATISTICS

This menu should only be changed by the System Administrators. In order to gain access to this menu, follow the instructions in “10.3 How to change the settings - administrator” section, but hold down the Menu button instead of the OK button. In this case, the default password is 0000.

This menu is in ENGLISH only.

ITEM		SETTING	EXPLANATION
ENTER PASSWORD		nnnn	Enters a password to enter Print Statistics menu. The default password is “0000.” “Print Statistics” category is not shown when Print Statistics function is not supported.
USAGE REPORT		ENABLE/ DISABLE	Enables/Disables the printing of the Usage Report. When changing a setting value, the printer is rebooted.
GROUP COUNTER		ENABLE/ DISABLE	Specifies if the Group counter is displayed in the Usage Report Print. Enable: Displayed, Disable: Not displayed. Conditions for display: Enable must be selected in Print Statistics > Usage Report.
SUPPLIES REPORT		ENABLE/ DISABLE	Indication of frequency of consumable exchange/non indication is set. When Enable is set, also the maintenance counter is indicated in together. Conditions for display: Enable must be selected in Print Statistics > Usage Report.
RST MAIN CNT		EXECUTE	Zeros the counter
CHANGE PASSWORD	NEW PASSWORD	****	Sets a new password to enter Print Statistics menu.
	VERIFY PASSWORD	****	Verifies the change

11. Maintenance

11.1 Replacing Consumable Items

Only use DuraLabel Catalyst consumables to ensure the best quality and performance from your hardware. Non original products may adversely affect your printer's performance and invalidate your warranty. If you have any questions about replacement of Catalyst consumables, contact Graphic Products.

TONER CARTRIDGE REPLACEMENT

NOTE: When the LCD display indicates TONER LOW, or if print appears faded, first open the top cover and try tapping the cartridge a few times to evenly distribute the toner powder. This will enable you to obtain the best “yield” from your toner cartridge.

⚠ CAUTION To avoid toner waste and possible toner sensor errors, do not change the toner cartridge(s) until “TONER EMPTY” is displayed.

The toner used in this printer is a very fine dry powder. It is contained in four cartridges: one each for cyan, magenta, yellow and black.

Toner powder can stain surfaces. Have a sheet of paper handy so that you have somewhere to place the used cartridge while you install the new one.

Dispose of the old cartridge responsibly, inside the pack that the new one came in. Follow any regulations, recommendations, etc., which may be in force concerning waste recycling.

If you do spill any toner powder, lightly brush it off. If possible, vacuum it or use a cool, damp cloth to remove any residue.

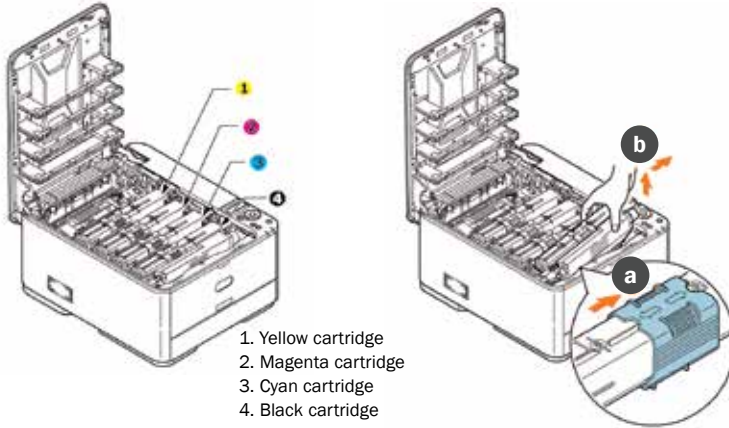
Do not use hot water, and never use solvents of any kind. They will make stains permanent.

⚠ WARNING If you inhale any toner or get it in your eyes, drink a little water or bathe your eyes liberally in cold water. Seek medical attention immediately.

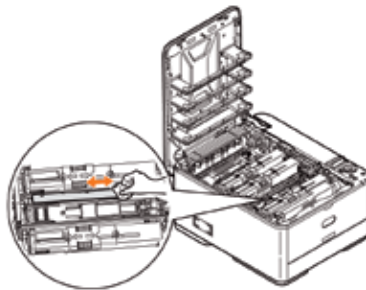
1. Press the cover release and open the printer's top cover fully.
-

⚠ WARNING If the printer has been powered on, the fuser will be hot. This area is clearly labelled. Do not touch.

2. Note the positions of the four cartridges. It is essential that they go back in the same order.

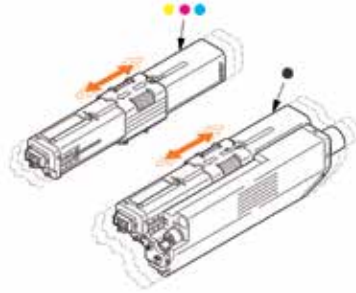


- a. Slide the colored release collar on the empty cartridge fully towards the right hand side of the printer.
- b. Lift the right-hand end of the cartridge and then draw the cartridge to the right to release the left-hand end as shown, and withdraw the toner cartridge out of the printer.
3. Put the cartridge down gently onto a piece of paper to prevent toner from marking your furniture.

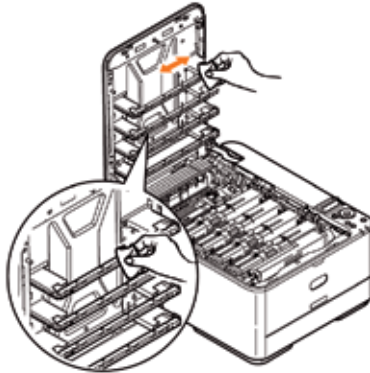


4. Remove the new cartridge from its box but leave its wrapping material in place for the moment.

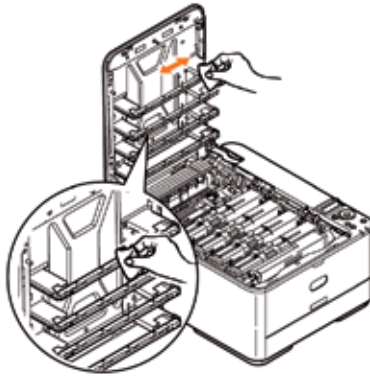
5. Gently shake the new cartridge from end to end several times to loosen and distribute the toner evenly inside the cartridge.



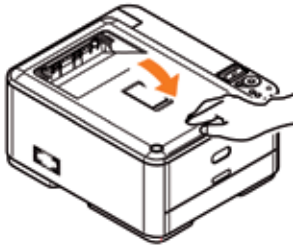
6. Remove the wrapping material.
7. Holding the cartridge by its top center, lower it into the printer over the image drum unit from which the old cartridge was removed.
8. Insert the left end of the cartridge into the top of the image drum unit first, pushing it against the spring on the drum unit, then lower the right end of the cartridge down onto the image drum unit.
9. Pressing gently down on the cartridge to ensure that it is firmly seated, slide the colored collar fully towards the left hand side of the printer. This will lock the cartridge into place and release toner into the image drum unit.



10. Gently wipe the LED head surface with a clean, lint free cloth.



11. Finally, close the top cover and press down firmly at both sides so that the cover latches closed.



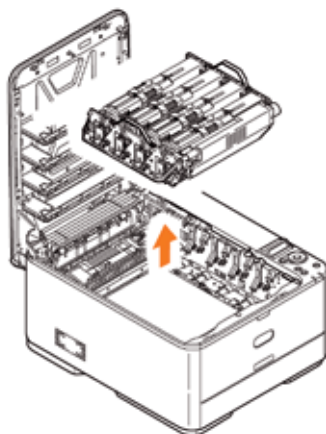
REPLACING THE TRANSFER BELT UNIT

The belt unit is located under the image drum assembly. Turn off the printer and allow the fuser to cool for about 10 minutes before opening the cover.

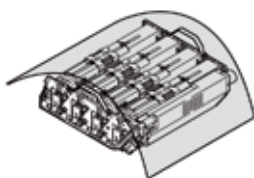
1. Press the cover release and open the printer's top cover fully.

⚠ WARNING If the printer has been powered on, the fuser will be hot. This area is clearly labelled. Do not touch.

2. Holding it by its handles, lift the image drum assembly, complete with toner cartridges, up and out of the printer.

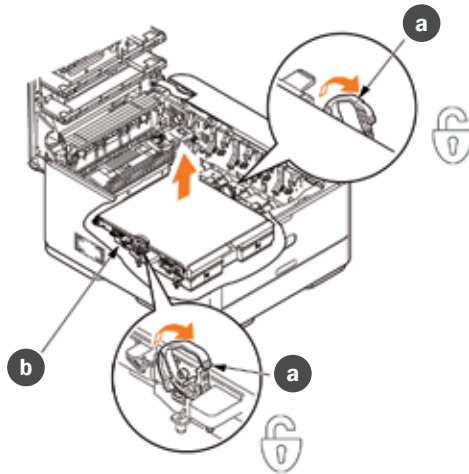


3. Place the assembly in a safe place away from direct sources of heat and light.

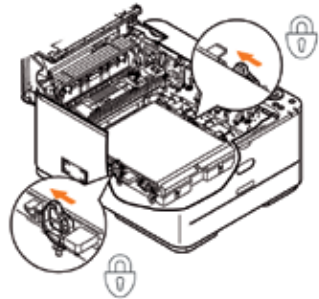
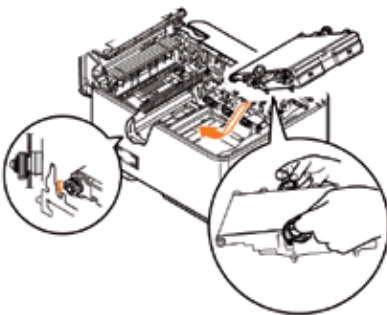


⚠ CAUTION The green image drum surface at the base of each cartridge is very delicate and light sensitive. Do not touch it and do not expose it to normal room light for more than 5 minutes. If the drum unit needs to be out of the printer for longer than this, please wrap the cartridge inside a black plastic bag to keep it away from light. Never expose the drum to direct sunlight or very bright room lighting.

4. Pull the locking levers at each side of the transfer belt up and towards the front of the machine.

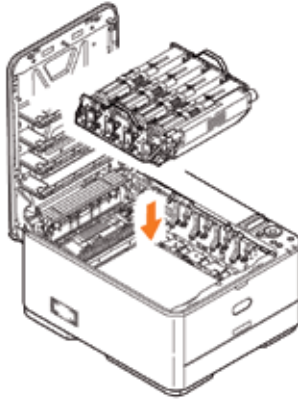


5. Using the locking levers (a), lift the belt (b) upwards and withdraw from the machine.
6. Lower the new belt unit into place, with the drive gear towards the rear of the printer. Locate the drive gear into the gear inside the printer by the rear right corner of the unit, and lower the belt unit flat inside the printer.



7. Push the locking levers towards the rear of the machine. This will secure the belt unit in place.

8. Holding the image drum assembly by its handles, lower it into place in the machine, locating the pegs at the sides into their slots in the sides of the printer cavity.



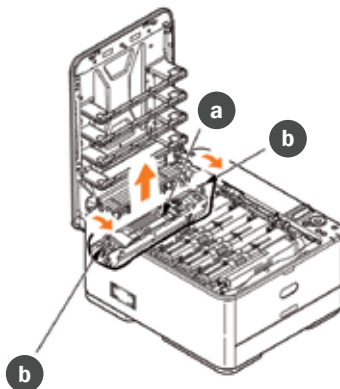
9. Finally, close the top cover and press down firmly at both sides so that the cover latches closed.

FUSER REPLACEMENT

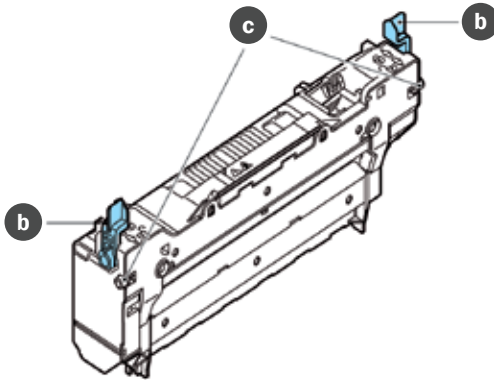
The fuser is located inside the printer just behind the toner cartridges.

⚠ WARNING If the printer has recently been powered on, some fuser components will be very hot. Handle the fuser with extreme care, holding it only by its handle, which will only be mildly warm to the touch. A warning label clearly indicates the area. If in doubt, turn the printer off and wait at least 10 minutes for the fuser to cool before opening the printer cover.

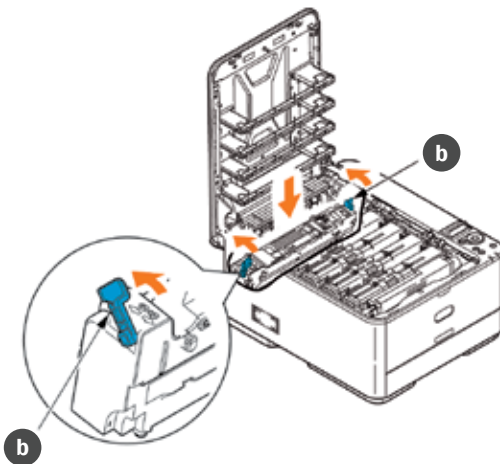
1. Press the cover release and open the printer's top cover fully.
2. Identify the fuser handle (a) on the top of the fuser unit.



3. Pull the two fuser retaining levers (b) towards the front of the printer so that they are fully upright.
4. Holding the fuser by its handle (a), lift the fuser straight up and out of the printer. If the fuser is still warm, place it on a flat surface which will not be damaged by heat.
5. Remove the new fuser from its packaging and remove the transit material.
6. Holding the new fuser by its handle, make sure that it is the correct way round. The retaining levers (b) should be fully upright, and the two locating lugs (c) should be towards you.



7. Lower the fuser into the printer, sliding the two lugs (c) into their slots in the sides of the printer cavity.
8. Push the two retaining levers (b) towards the rear of the printer to lock the fuser in place.



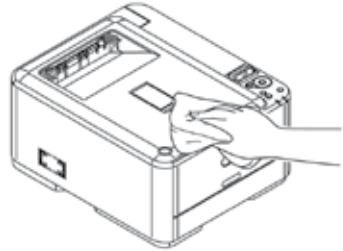
9. Finally, close the top cover and press down firmly at both sides so that the cover latches closed.

11.2 Cleaning

⚠ CAUTION Use a clean, moist, lint-free cloth for cleaning. Do not use benzene, thinners or alcohol as a cleaning agent.

UNIT CASING

1. Turn the printer off.
2. Wipe the unit surface with a soft cloth moistened sparingly with water or neutral detergent.
3. Use a soft dry cloth to dry the unit surface.
4. Turn the printer on.

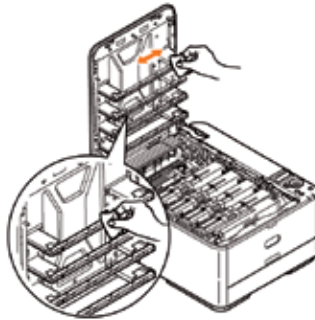


LED HEAD

Clean the LED heads when printing is unclear, has white lines or when text is blurred.

There is no need to turn off the printer to clean the lens.

1. Press the cover release and open the printer's top cover fully.
2. Gently wipe the LED head surface with a clean, lint free cloth.



⚠ CAUTION Do not use methyl alcohol or other solvents on the LED head as damage to the lens surface will occur.

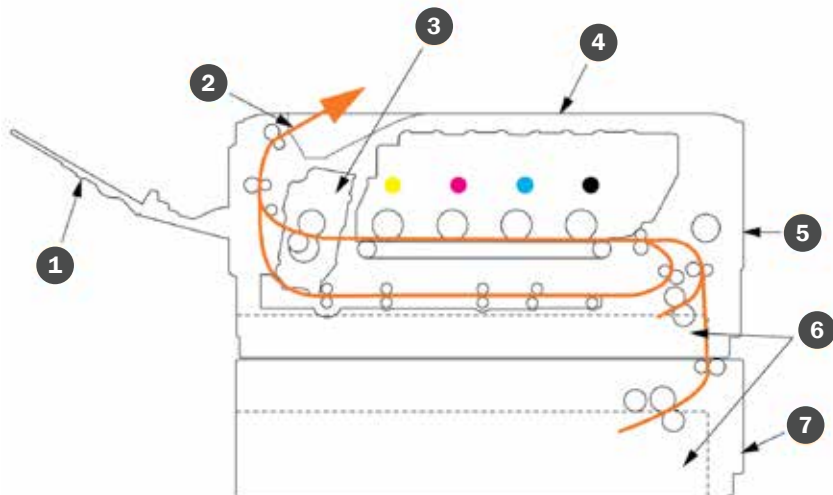
3. Close the top cover and press down firmly at both sides so that the cover latches closed.

12. Troubleshooting

Provided that you follow the recommendations in this guide on the use of print media, and you keep the media in good condition prior to use, your printer should give years of reliable service. However, paper jams occasionally do occur, and this section explains how to clear them quickly and simply.

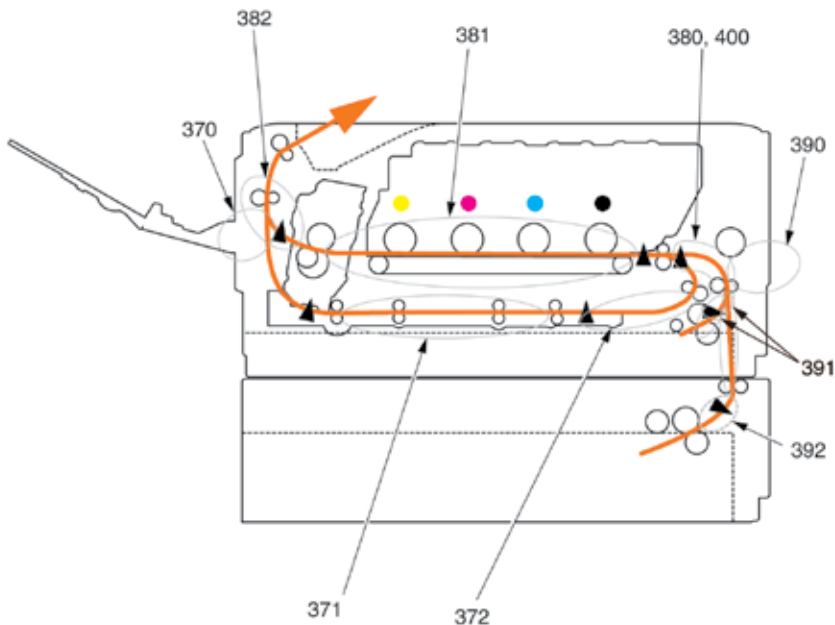
Jams can occur due to paper misfeeding from a paper tray or at any point on the paper path through the printer. When a jam occurs, the printer immediately stops, and the Attention LED on the control panel informs you of the event. If printing multiple pages (or copies), do not assume that, having cleared an obvious sheet, others will not also be stopped somewhere along the path. These must also be removed in order to clear the jam fully and restore normal operation.

12.1 Major Printer Components and Paper Path



1. Face-up stacker
2. Paper exit
3. Fuser unit
4. Top cover
5. Front cover
6. Tray 1
7. Tray 2

12.2 Paper Sensor Error Codes



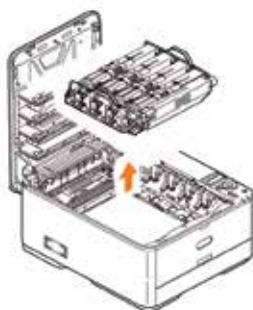
CODE #	LOCATION
370	Duplex
371	Duplex
372	Duplex
380	Paper feed
390	MP Tray
391	Paper Tray
381	Paper path
382	Paper exit
392	2nd Paper tray (If fitted)
400	Paper size
409	Face up stacker (sensor not shown)

12.3 Clearing Paper Jams

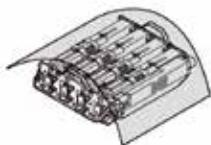
1. If a sheet is well advanced out of the top of the printer, simply grip it and pull gently to draw it fully out. If it does not remove easily, do not use excessive force. It can be removed from the rear later.
2. Press the cover release and open the printer's top cover fully.

⚠ WARNING If the printer has been powered on, the fuser will be hot. This area is clearly labelled. Do not touch.

3. Holding it by its handles, lift the image drum assembly, complete with the toner cartridges, up and out of the printer.

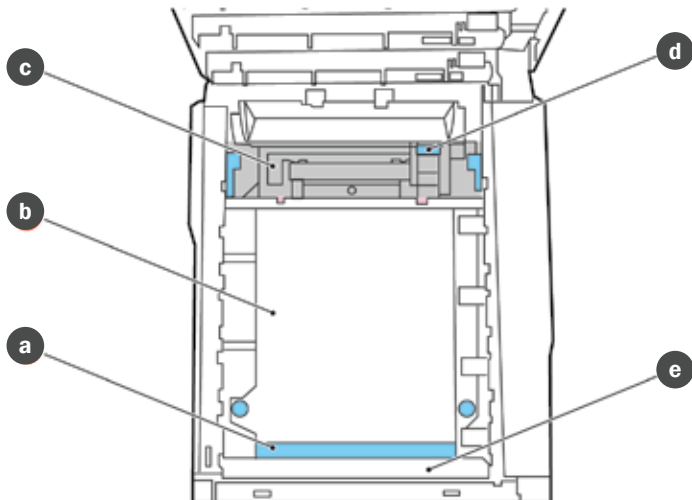


4. Put the assembly down gently onto a piece of paper to prevent toner from marking your furniture and to avoid damaging the green drum surface, and cover.



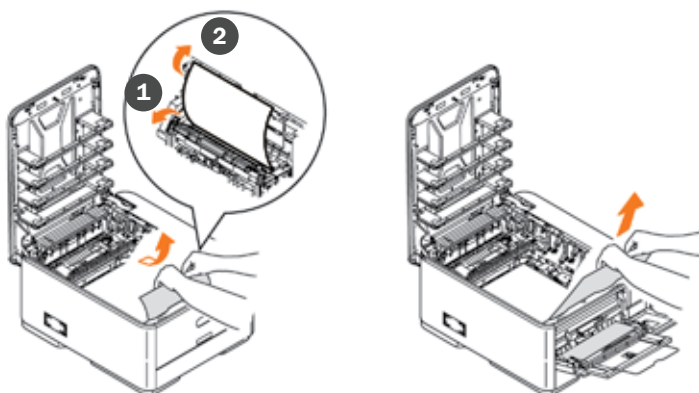
⚠ CAUTION The green image drum surface at the base of the Image Drum is very delicate and light sensitive. Do not touch it and do not expose it to normal room light for more than 5 minutes. If the drum unit needs to be out of the printer for longer than this, please wrap the cartridge inside a black plastic bag to keep it away from light. Never expose the drum to direct sunlight or very bright room lighting.

5. Look into the printer to check whether any sheets of paper are visible on any part of the belt unit.

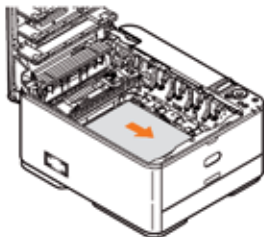


⚠ CAUTION Do not use any sharp or abrasive objects to separate sheets from the belt. This may damage the belt surface.

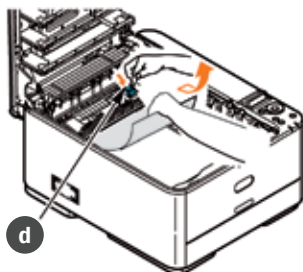
- a. To remove a sheet with its leading edge at the front of the belt (a), lift the plastic guard (e) at the front of the printer, then carefully lift the sheet from the belt and pull it forwards into the internal drum cavity and withdraw the sheet.



- b. To remove a sheet from the central area of the belt (b), carefully separate the sheet from the belt surface and withdraw the sheet.

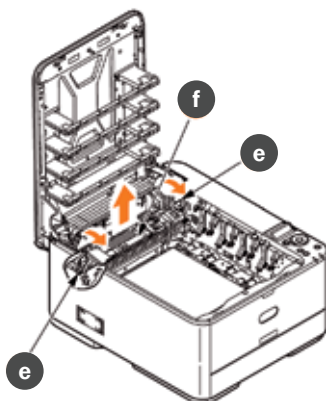


- c. To remove a sheet just entering the fuser (c), separate the trailing edge of the sheet from the belt, push the fuser pressure release lever (d) towards the front and down to release the fuser's grip on the sheet, and withdraw the sheet through the drum cavity area. Then allow the pressure release lever to rise again.

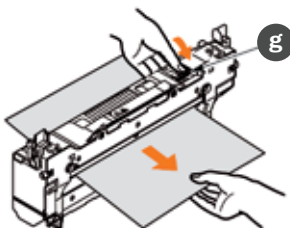


NOTE: If the sheet is well advanced into the fuser (only a short length is still visible), do not attempt to pull it back

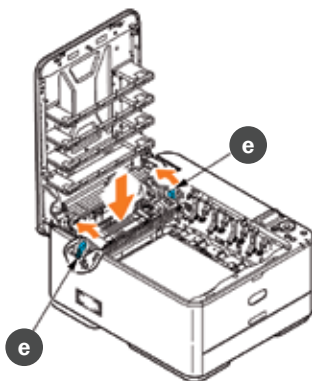
- d. To remove a sheet in the fuser, move the two retaining levers (e) towards the front of the machine to release the fuser. Withdraw the fuser unit using the handle (f).



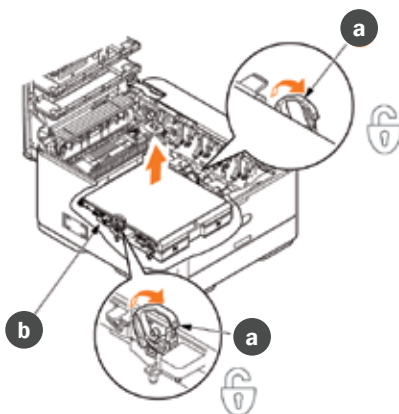
- e. Press release lever (g) and pull the trapped paper from the fuser.



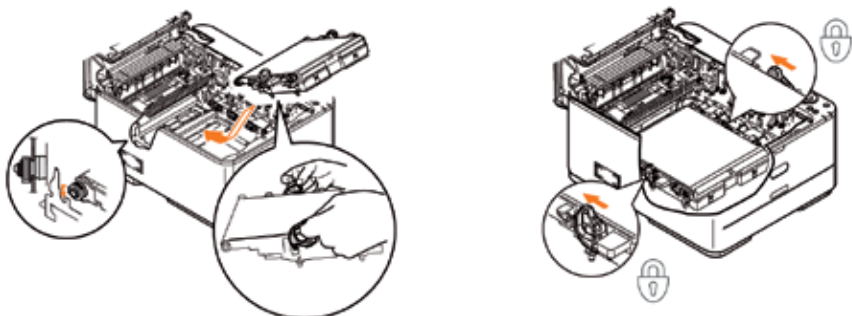
- f. Replace fuser unit into the machine and move locking levers (e) toward the rear of the machine.



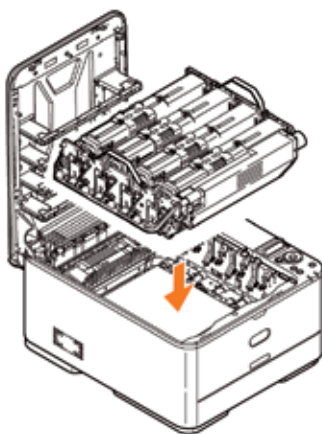
6. If you were duplex printing when the jam occurred, check the duplex paper path:
- a. Pull the locking levers at each side of the transfer belt up and towards the front of the machine.



- b. Using the locking levers (a), lift the belt (b) upwards and withdraw from the machine.
- c. Look into the printer to check whether any sheets of paper are visible on any part of the paper path. Pull out any sheets found in this area.
- d. Lower the belt unit into place, with the drive gear towards the rear of the printer. Locate the drive gear into the gear inside the printer by the rear right corner of the unit, and lower the belt unit flat inside the printer.

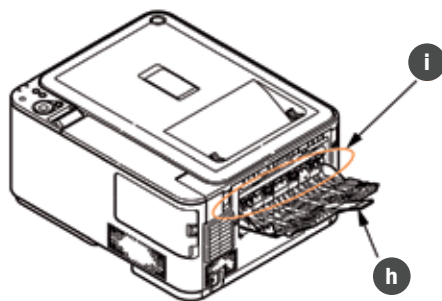


- e. Push the locking levers towards the rear of the machine. This will secure the belt unit in place.
- 7.** Holding the image drum assembly by its handles, lower it into place in the machine, locating the pegs at the sides into their slots in the sides of the printer cavity.

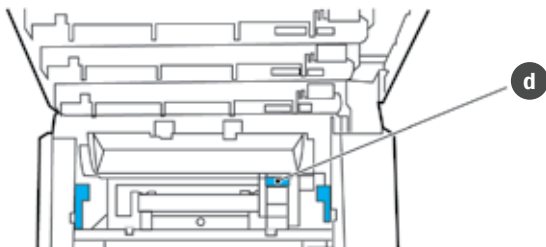


- 8.** Lower the top cover but do not press down to latch it closed yet. This will protect the drum from excessive exposure to room lighting while you check the remaining areas for jammed sheets.

9. Open the rear exit tray (h) and check for a sheet of paper in the rear path area (i).



- Pull out any sheets found in this area.
- If the sheet is low down in this area and difficult to remove, it is probably still gripped by the fuser. In this case raise the top cover, reach around and press down on the fuser pressure release lever (d).



10. If you are not using the rear exit tray, close it once any paper has been removed from this area.
11. Pull out the paper tray and ensure that all paper is stacked properly, is undamaged, and that the paper guides are properly positioned against the edges of the paper stack. When satisfied, replace the tray.



12. Finally, close the top cover and press down firmly so that the cover latches closed.

When the jam has been cleared, if JAM RECOVERY is set to ON in the SYS CONFIG MENU, the printer will attempt to reprint any pages lost due to paper jams.

12.4 Dealing with Unsatisfactory Printing

SYMPTOMS	POSSIBLE CAUSES	STEPS TO MAKE
Vertical white lines can be seen on the printed page.	The LED head is dirty.	Wipe the LED head with a soft, lint-free cloth.
	The toner is low.	Open the top cover and tap the cartridge a few times to evenly distribute any remaining toner. If symptoms persist, replace the toner cartridge.
	Foreign materials may be present in the image drum.	Replace the image drum cartridge.
	Light-shielding film of the image drum cartridge is dirty.	Wipe the film with a soft, lint-free cloth.
Printed images are fading vertically.	The LED head is dirty.	Wipe the LED head with a soft, lint-free cloth.
	The toner is low.	Open the top cover and tap the cartridge a few times to evenly distribute any remaining toner. If symptoms persist, replace the toner cartridge.
	The paper is not suitable for the printer unit.	Use recommended paper.
Printing is light.	The toner cartridge is not properly seated.	Reinstall the toner cartridge.
	The toner is low.	Open the top cover and tap the cartridge a few times to evenly distribute any remaining toner. If symptoms persist, replace the toner cartridge.
	The paper is moist.	Use paper stored in proper temperature and humidity conditions.
	The paper is not suitable for the printer unit.	Use recommended paper.
	Thickness and type of paper are inappropriate.	Set the correct value of media type in the Advanced Options - Media Type menu or set one value thicker for media type.
	Recycled paper is being used.	Set one value thicker for media type in the Advanced Options - Media Type menu.
Partially faded images. White spots and lines appear in solid printing.	Paper is moist or dry.	Use paper stored in proper temperature and humidity conditions.

SYMPTOMS	POSSIBLE CAUSES	STEPS TO MAKE
Vertical lines appear.	The image drum cartridge is damaged.	Replace the image drum cartridge.
	The toner is low.	Open the top cover and tap the cartridge a few times to evenly distribute any remaining toner. If symptoms persist, replace the toner cartridge.
Horizontal Lines and spots appear periodically.	When the interval is about 4", the image drum (the green tube) is damaged or dirty.	Wipe it lightly with a soft cloth. Replace the image drum cartridge when it is damaged.
	When the interval is about 1.2", there may be foreign particles in the image drum cartridge.	Open/close the top cover, and print again.
	When the interval is about 86mm (3.4in), the fuser unit is damaged.	Replace the fuser unit.
	The image drum cartridge has been exposed to light.	Replace the image drum cartridge if the problem is not resolved.
White area of paper is lightly stained.	Paper contains static.	Use paper stored in proper temperature and humidity conditions.
	Paper is too thick.	Use thinner paper.
	The toner is low.	Open the top cover and tap the cartridge a few times to evenly distribute any remaining toner. If symptoms persist, replace the toner cartridge.
Periphery of the letters is smudged.	The LED head is dirty.	Wipe the LED head with a soft, lint-free cloth.
Toner comes off when it is rubbed.	The thickness and type of the paper are incorrectly set.	Set the correct value of media type in the Advanced Options - Media Type menu or set one value lighter for media type.
	Recycled paper is used.	Set one value thicker for media type in the Advanced Options - Media Type menu.
Glossiness is not uniform.	The thickness and type of the paper are incorrectly set.	Set the correct value of media type in the Advanced Options - Media Type menu or set one value lighter for media type.

13. Specifications

ITEM	SPECIFICATION
Dimensions	16.1" width / 19.8" depth / 9.5 " height
Weight	50 lbs
Print technology	Multilevel LED printheads and microfine toner
Toner capacity	3,000 pages CMY / 3,500 pages black
Print speed	23 pages per minute color, 25 ppm black & white
Time / 1st page	8.5 sec.
Resolution	Up to 1200 x 600 dpi
2-sided print	Yes
Energy efficiency	ENERGY STAR compliant
Connectivity	USB, Ethernet, Parallel
Power supply	110 to 127VAC @ 50/60 Hz \pm 2% 220 to 240VAC @ 50/60 Hz \pm 2%
Operating environment	Operating 50-90°C/20 to 80% RH (optimum wet, 2°C dry) Off: 0 to 43°C/10 to 90% RH (optimum 26.8°C wet, 2°C dry)
Print environment	Color 17 to 27°C @ 50 to 70% RH

THIS PAGE IS INTENTIONALLY LEFT BLANK

THIS PAGE IS INTENTIONALLY LEFT BLANK



800.788.5572 | DuraLabel.com

© 2014, 2015 Graphic Products, Inc. All Rights Reserved.