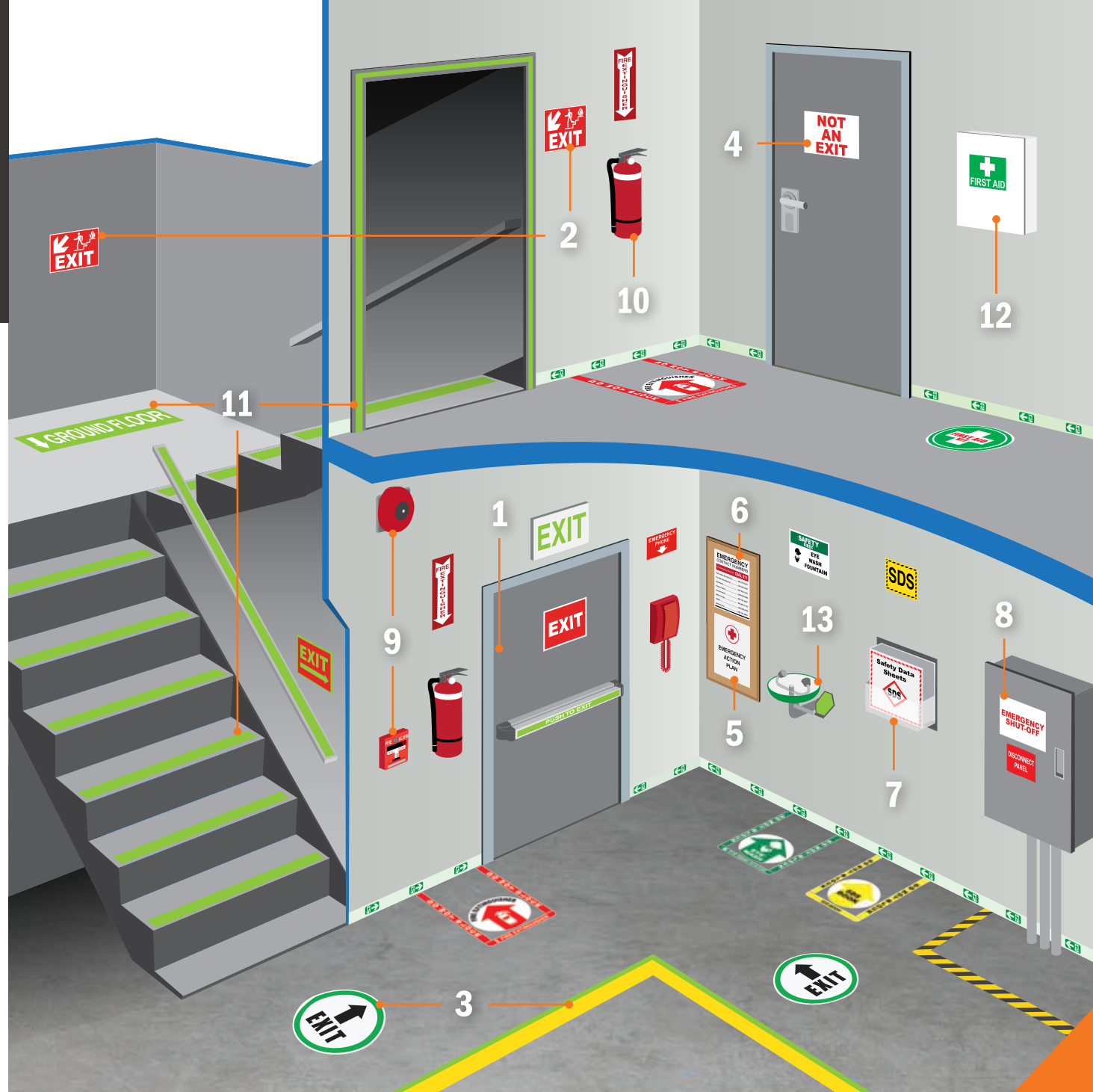


# EMERGENCY PREPARATION

## Quick Reference Guide

OSHA's regulations in 29 CFR part 1910 include several requirements for emergency preparation. Additional expert recommendations can be found in NFPA 101 (Life Safety Code), which is mandatory in some facilities and jurisdictions. These are some of the major requirements for visual communication:

- 1 EXIT DOORS** - Each exit must be clearly visible and identified. §1910.37(b)(2), (6), and (7)
- 2 DIRECTIONS TO EXIT** - The direction to the nearest exit must be immediately apparent, or marked with signs. §1910.37(b)(4)
- 3 CLEAR PATHS TO EXIT** - Exit routes must be kept free and unobstructed. §1910.37(a)(3)
- 4 NON-EXIT DOORS** - Any door that is not an exit, but could be mistaken for one, must be marked. §1910.37(b)(5)
- 5 EMERGENCY ACTION PLANS** - A facility's Emergency Action Plan (EAP) must be available for employee review. §1910.38(b)
- 6 EMERGENCY CONTACTS** - Emergency phone numbers must be conspicuously posted. §1910.165(b)(4)
- 7 CHEMICAL INFORMATION** - The SDS for each hazardous chemical in the workplace must be readily accessible. §1910.1200(g)(8)
- 8 ELECTRICAL SHUT-OFFS** - Disconnects must be marked as such for easy identification. §1910.303(f)
- 9 ALARM DEVICES** - Devices to manually activate an alarm must be unobstructed and conspicuous. §1910.165(e)
- 10 FIRE EXTINGUISHERS** - Fire extinguishers must be placed and marked for ready accessibility. §1910.15(c)(1)
- 11 GLOWING MARKINGS** - Handrails and exits may need glow-in-the-dark markings. See your local building code.
- 12 FIRST AID KITS** - Appropriate first aid supplies must be readily available. §1910.151(b)
- 13 STATIONARY EQUIPMENT** - Eyewash stations, emergency showers, and similar installed equipment should be easy to locate in an emergency. §1910.151(c)



Get Prepared Today! 877.534.5157 | [GraphicProducts.com](http://GraphicProducts.com)

This guide is for general information purposes only. It is not a substitute for review of applicable standards. © 2018 Graphic Products, Inc. All rights reserved.

ARE YOU  
READY TO  
PREPARE?  
see other side ▶

# Is Your Facility Prepared?

Keep your workers safe with visual communication solutions by Graphic Products



**DuraLabel Kodiak**  
4"-10" tape widths

**DuraLabel Toro**  
½"-4" tape widths

## DURALABEL PRINTERS & SUPPLIES

Create custom labels and signs on demand with DuraLabel industrial printers and supplies. Free label software and lifetime support included.



## PREMADE SIGNS & LABELS

Equip your facility with installation-ready premade signs and labels. Over 3,000 messages to choose from.



## PATHFINDER FLOOR MARKING TAPES

Direct, warn, and protect employees with floor tapes and signs. Glow-in-the-dark, aisle, anti-slip, and more tapes to choose from.



Get Prepared Today! 877.534.5157 | [GraphicProducts.com](http://GraphicProducts.com)