

DuraLabel®

TORO™

Portable Integrated Printer



Dimensions:

8.5"(H) x 13.5"(W) x 10.25"(D)



Call **1-800-788-5572** or visit us at **DuraLabelToro.com**

DuraLabel® TORO™

Toro is DuraLabel's newest, most advanced label printer. Toro comes complete in one lightweight unit. With optional battery power, Toro can make labels on the spot when and where you need them.

Standalone Capability

Toro is a completely independent printing system including built-in keyboard, touch screen, and software.

Network Independence

Toro does not require IT support or network connectivity. Toro's embedded software gives you independence.

Mobility

Take Toro anywhere in your facility or to a remote site. Toro weighs in at 13.8 lbs. (without supply).

Toro Supplies

Industrial Strength Vinyl

Supplies are industrial-grade, UV and chemical resistant, durable vinyl which will last for years - indoors and out. This continuous vinyl is available in widths from 1/2" to 4" in 17 standard colors.



View additional and specialty colors at www.DuraLabel.com

Ribbon

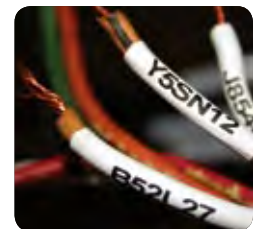
Premium quality thermal transfer ribbons are UV and chemical resistant, engineered to withstand harsh environments. Available in 7 colors. Specialty ribbons also available.



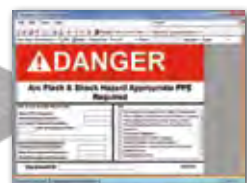
Let Toro do the work. **Smart Chip** automatically recognizes supply types in your printer. See backside for additional benefits.

Applications

- OSHA Compliance
- Arc Flash
- NFPA & RTK
- Equipment
- Pipe Markers
- ANSI Compliance
- Lean Manufacturing
- Maintenance
- Electrical Panels
- 5S
- Kanban
- Racks, Shelves & Bins
- Valve Tags
- Barcode
- Kaizen
- Safety
- Lockout/Tagout
- Wire Marking
- Name Tents
- Bilingual
- Aisle Markers and more...



Software Included!



DuraSuite makes creating labels fast and easy.

DuraSuite™ Labeling Software

Pre-installed software integrates both industrial and safety labeling templates with popular symbols for effortless printing.

DuraSuite Includes:

- RTK/NFPA labeling
- Arc Flash templates
- ASME/ANSI, IIR and general pipe marking templates
- Custom labels

Extras:

- OpenOffice.org
- Q-Label
- 1300+ Symbol Library



Order your Portable Integrated Printer Today!
Visit DuraLabelToro.com or
Call **1-800-788-5572**.

Save Money with Kits

Many kits are available, including OSHA, Pipe Marking and 5S, or you can customize your own kit. Call **1-800-788-5572** today.



Arc Flash Kit

Comes complete with warning and danger arc flash die-cut labels. Use Toro's built-in arc flash templates to make sure you're compliant.



Mobile Kit

Take Toro on the go with the Mobile Kit. Includes carrying case for Toro and supplies, and a battery good for three hours of printing in the field.

Specialty Supplies



High-Tack

Adheres to difficult-to-label surfaces - *an extremely durable & permanent solution!*



High-Temp

Designed to withstand extreme temperatures from -40°F to 300°F .



Reflective

Comes in a variety of colors - reflective signs and labels are *great in low-light environments.*



DuraTag™

Print directly on this tear-resistant tag stock. *Create custom designs!*

**We can
customize
your kit.**



NO POWER NO PROBLEM.

Toro offers an optional battery and charger giving you freedom to print anytime and anywhere without an external power source.

The Toro battery is a Lithium-ion battery that mounts into the back of the Toro. The battery is good for more than 300 lifetime charges and is warranted for 9 months from the date of purchase.

- 3 hour average continuous print time
- 30 hour battery life with printer in sleep mode
- 3 hour charge time when battery is < 10% power



No power? No network? No problem with Toro.

Toro is a complete printing system in one mobile unit.



Touch Screen

9" diameter landscape touch screen



Keyboard

Full-size QWERTY keyboard with wireless mouse



Mobility

No plug/outlet required with battery; print indoors and out



Easy Access

Quick and simple supply loading and changing

Specifications

Printer

- Type: thermal transfer
- Maximum print width: 4.0"
- Unlimited print length with DuraSuite Labeling Software

Label Stock

- Type: continuous, die-cut and custom printed rolls
- Capacity: 140 ft.

Interface

- Full-sized flip down keyboard
- Memory: 4GB flash, 1GB SDRAM
- Communication interface: USB-A, USB-B, optional print server port

Power Requirements

- Input Voltage: 24V DC, 5A
- *DuraLabel labelers have worldwide voltage capability*

DuraLabel Toro Specifications subject to change

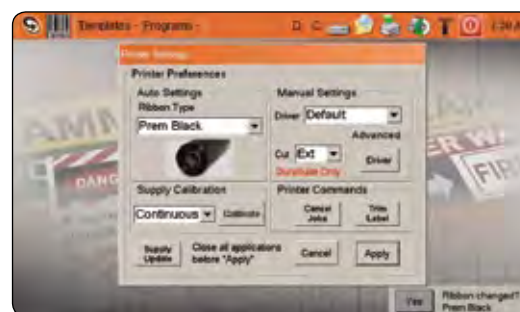


Toro delivers trouble-free printing

Getting started with the DuraLabel Toro is effortless. Built-in Smart Chip technology makes changing supplies and using Toro fast and easy. The Smart Chip:



- Identifies and auto selects the correct printer driver and supply type
- Shows remaining available supply
- Prompts for calibration and ribbon changes
- Indicates supply and ribbon incompatible combinations



See more
Toro Benefits!

