

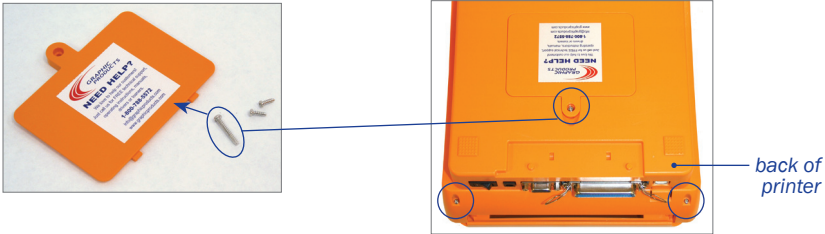
REPLACE CUTTER – Instructions are for the Duralabel PRO and DuraLabel PRO 300 printer models

It is highly recommended a magnetic screwdriver is used for recessed screws.

To Remove Cutter

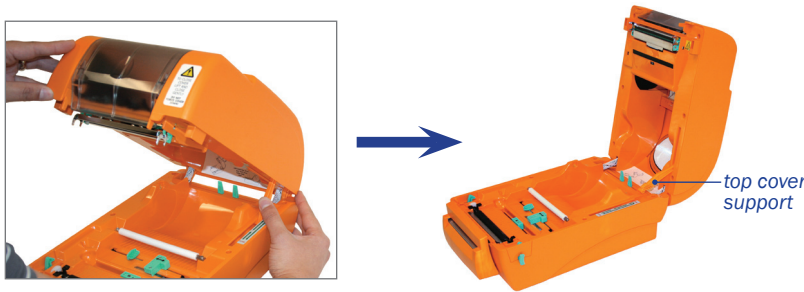
1. Turn printer upside down on top cover.

2. Remove two screws in back of printer, small panel screw and panel. Keep together and set aside.

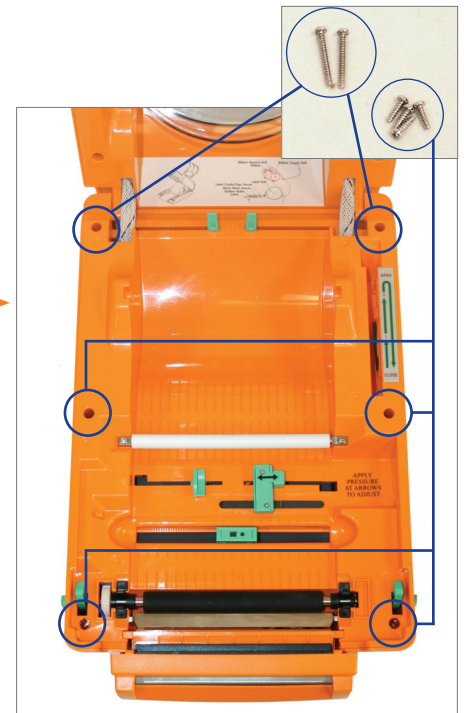


3. Turn printer back to upright position and open top cover.

4. Hold top cover, firmly press back on top cover support until it pops back and out of slot.



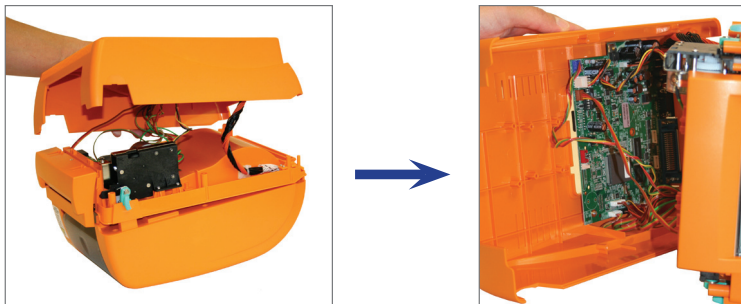
5. Open top cover all the way, remove six screws on inside of printer. Keep screws together and set aside. [See photo to the right.](#)



6. Detach bottom casing of printer by pulling apart.

NOTE: Do not pull apart too hard. Cables are attached.

7. Turn the printer on its side.



8. Disconnect cutter cable from inside of printer bottom casing.

NOTE: Do not disconnect by pulling on cable. Pull from plastic connector, close to printer.



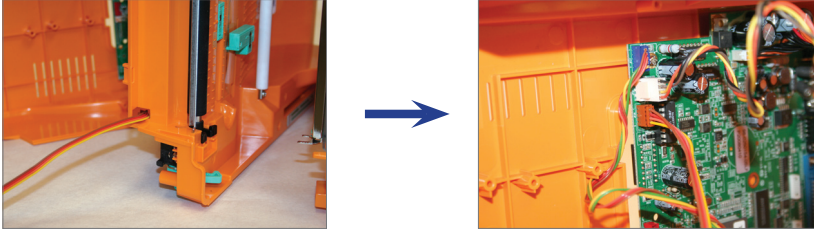
9. Lift cutter up and out of niches.

10. Thread cutter cable through opening and set cutter aside.

See reverse side for install cutter instructions.

To Install Cutter

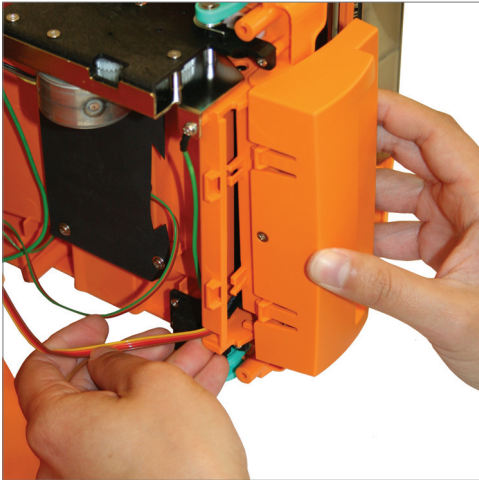
1. Thread cutter cable through opening of printer and connect to inside of printer bottom casing.



IMPORTANT! Do not pinch cutter cable when placing cutter into niches.

2. Connect cutter to front of printer while feeding cutter cable through opening.

TIP: Keep tension on cable to avoid pinching.



3. Attach bottom casing to printer.

4. Set printer upright and use screwdriver to screw six screws on inside of printer. *See Step 5 of "To Remove Cutter"*

NOTE: Two longest screws go in back of printer, by cover support.

5. Hold top cover in a slightly closed-position and arrange top cover support back in slot, then close top cover.



6. Turn printer upside down on its top cover.

7. Fit panel back on bottom of printer and use a screwdriver to screw the three screws back in place. *See Step 2 of "To Remove Cutter"*

8. Turn printer right-side up and you're ready to print with a new cutter installed.