

# **DuraLabel® LabPRO**

## == **QuickStart Guide** ==



**Graphic Products, Inc.**

**1-800-788-5572**

Local: 503-644-5572

[www.DuraLabel.com](http://www.DuraLabel.com)

[www.GraphicProducts.com](http://www.GraphicProducts.com)

E-mail: [info@GraphicProducts.com](mailto:info@GraphicProducts.com)

**Read Me  
First!**

# Minimum System Requirements

Operating System: Windows 2000 SP4, Windows XP SP2 and Windows Vista

Memory: 128 MB RAM

Additional Requirements: USB 1.1 or 2.0 and IT Administration Privileges

## **\*\*IMPORTANT\*\***

**For Upgrading from an existing DuraLabel® driver installation!**

## Upgrade Drivers

In order to upgrade DuraLabel® Lab PRO printer drivers the previous driver will need to be uninstalled. Please follow these steps:

1. Press the “**Uninstall Driver**” button on the installation screen.
2. Click “**Remove printer drivers**” and click “**Next.**”
3. Click “**Use advanced printer driver removal options**” and click “**Next.**”
4. Check all existing DuraLabel® printers and click “**Next.**”
5. Check all existing DuraLabel® drivers and click “**Next.**”
6. Check all existing DuraLabel® components and click “**Next.**”
7. Check the files associated with the deleted items you wish to remove and click “**Next.**”
8. Check through the list provided and click “**Finish.**”
9. Click “**Restart.**”

The DuraLabel® LabPRO printer driver may now be installed. Begin with page 7, Step 2 Connect Printer of the QuickStart Guide.

# INTRODUCTION

Congratulations on your new purchase of the DuraLabel® LabPRO! This guide is included to get you printing as soon as possible.

With this guide you will learn how to set up your printer, load supplies and print labels.

The ribbon and various print media for the DuraLabel® LabPRO have been optimized for compatibility and print quality. Only authorized supplies from Graphic Products will print correctly in the DuraLabel® LabPRO.

If you need more help with setting up your printer, please refer to the DuraLabel® LabPRO Manual (included on the installation CD), visit [www.DuraLabel.com](http://www.DuraLabel.com) or give us a call.

**Graphic Products, Inc.**  
**1-800-788-5572**

## Contents:

What you should receive .....	pg. 2
<b>1. Load Printer</b> .....	pg. 4
Load Ribbon .....	pg. 4
Load Vinyl Tape .....	pg. 6
<b>2. Connect Printer</b> .....	pg. 7
<b>3. Install Using USB Cable</b> .....	pg. 7
<b>4. Install Using Parallel Cable</b> .....	pg. 8
<b>5. Set Up to Print</b> .....	pg. 9

# WHAT YOU SHOULD RECEIVE

2 Ribbon Spindles,  
(1 with an empty paper core)

DuraLabel® LabPRO Installation CD &  
DuraLabel® LabPRO QuickStart Guide

USB Cable



DuraLabel® LabPRO  
Thermal Transfer Printer

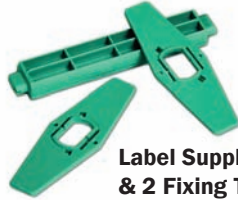
Label Supply Spindle  
& 2 Fixing Tabs

AC Adapter



**USB Cable**

**DuraLabel® LabPRO  
Thermal Transfer Printer**



**Label Supply Spindle  
& 2 Fixing Tabs**



**AC Adapter**



**2 Ribbon Spindles,  
(1 with an empty paper core)**

## **Contents of Package:**

- DuraLabel® LabPRO Thermal Transfer Printer
- DuraLabel® LabPRO Installation CD
- DuraLabel® LabPRO QuickStart Guide
- DuraLabel® LabPRO User's Guide
- AC Adapter
- USB Cable
- 2 Ribbon Spindles (black spindles, one will have a paper core on it)
- Label Supply Spindle
- 2 Fixing Tabs (for each end of the Label Supply Spindle)

If you are missing a part, please call your Graphic Products Representative

## **\*\*IMPORTANT\*\***

**Always turn OFF the printer when loading supplies. Always wait at least 5 seconds before turning ON the power.**

### **1. LOAD PRINTER**

See the Load Printer section (pages 3-10) in the User's Guide for a more detailed explanation of supply loading.

The ribbon and various print media for the DuraLabel® LabPRO have been optimized for compatibility and print quality. Only authorized supplies from Graphic Products will print correctly in the DuraLabel® LabPRO.

**For more information about supply loading, please view the supply loading video on the installation CD.**

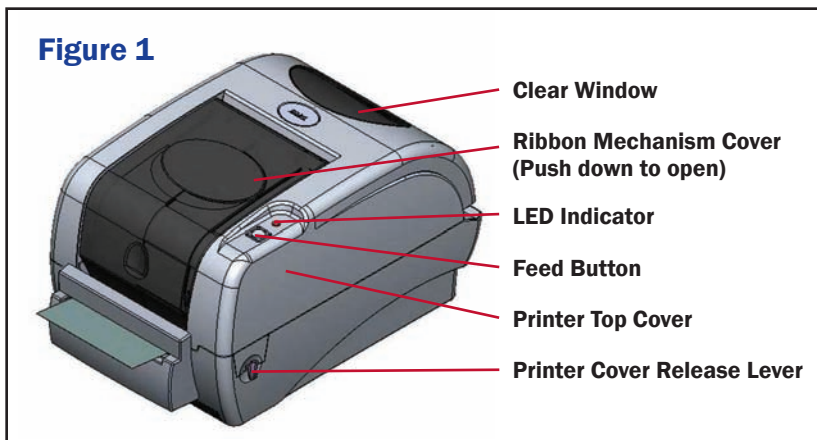
### **Load Ribbon**

#### **\*\*IMPORTANT\*\***

**Always turn OFF the power first!**

The following instructions are for loading 4.3" ribbon supply. See To Load 2.5" Ribbon Supply section (page 6) in the User's Guide for instructions on how to load 2.5" ribbon supply.

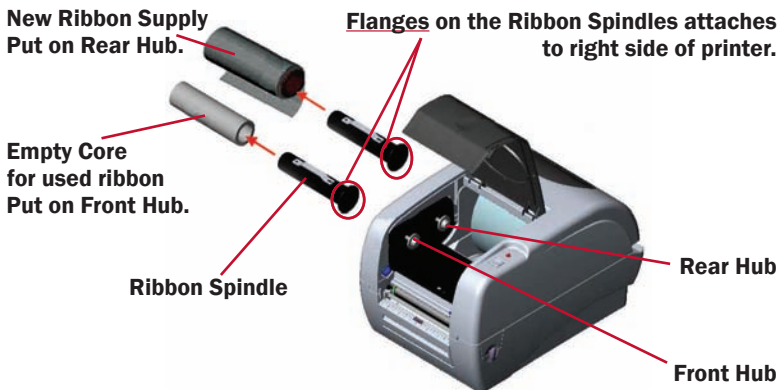
- 1. Open the Ribbon Mechanism Cover. (See Figure 1)**



- Place Ribbon Supply onto the empty Ribbon Supply Spindle and insert the spindle into the Rear Hub.
- Place the Ribbon Rewind Spindle, with the paper core, on the Front Hub.
 

**Note:** Make sure the flanges on the end of the ribbon spindles are on the right side of the printer when viewing from the front. (See Figure 2)

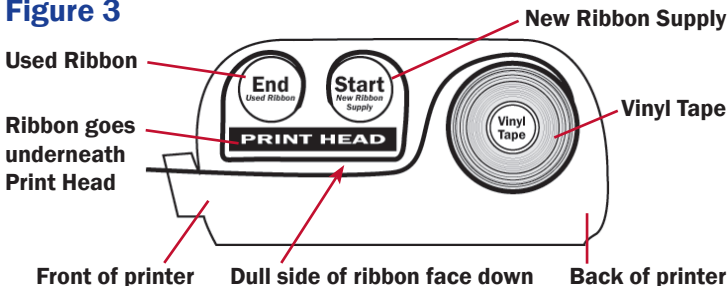
**Figure 2**



- Open the Printer Cover using the Printer Cover Release Levers. (See Figure 1, pg. 4)
- Thread the ribbon down and underneath the Ribbon Mechanism.
 

**Note:** The dull side of the ribbon should face down (face the label stock). (See Figure 3)
- Tape the entire width of the end of the ribbon to the front empty core.
- Wind the ribbon onto the take-up core by rotating it with your thumb.

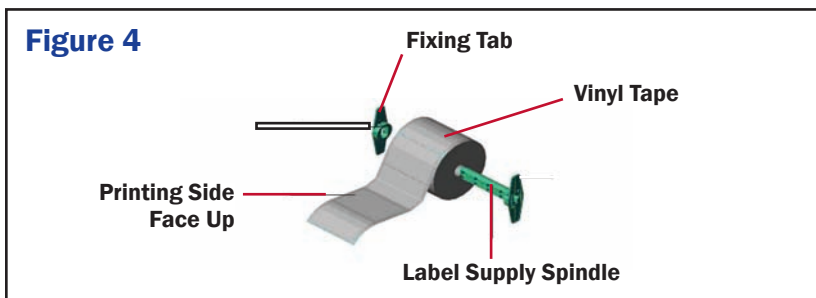
**Figure 3**



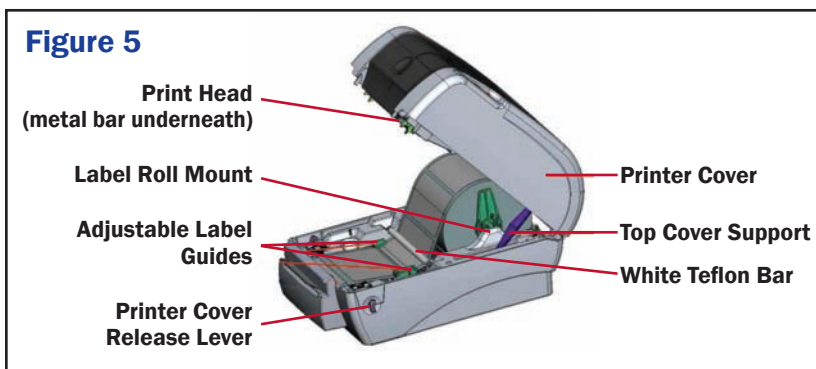
# Load Vinyl Tape

**\*\*IMPORTANT\*\*** Always turn **OFF** the power first!

1. With the Ribbon Mechanism still in upright position, center the Label Stock on the Label Supply Roll Spindle using the Fixing Tabs. (See Figure 4)



2. Place the Label Supply Spindle with the Label Stock in the Label Roll Mount slots. (See Figure 5)
3. Guide the Label Stock underneath the white Teflon Bar.
4. Secure the Label Stock in place by moving the Adjustable Label Guides to hold the Label Stock in the center.
5. Thread the Label Stock through the Printed Label Opening, leaving about 1/2" Label Stock hanging out the opening.



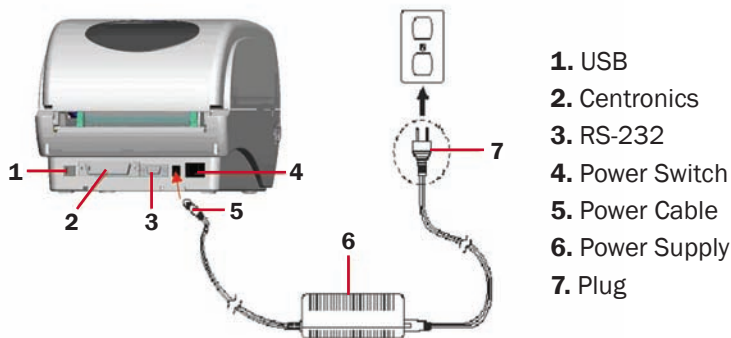
6. Close Printer Cover by lifting it all the way up, then gently press down until it latches closed.
7. Close the Ribbon Mechanism Cover by pressing down until it latches.

## 2. CONNECT PRINTER

**\*\*IMPORTANT\*\*** These Steps need to be done in the order below!

1. Connect the **power supply**.
2. Connect the DuraLabel® LabPRO to your PC using the **USB or parallel cable**.
3. **Turn on the** DuraLabel® LabPRO. (Switch is in back of printer, **See Figure 6**)

**Figure 6**



## 3. INSTALL USING USB CABLE

**\*\*IMPORTANT\*\***

**You must have administrative rights in order to perform this installation.**

1. A "Found New Hardware" dialog box may appear. If so, select "**No, not this time.**"
2. Insert DuraLabel® LabPRO Installation CD into the CD-ROM drive.
3. Select "**Install the software automatically**" and click "**Next.**" (Step 3 of "Install Using USB Cable" may run automatically.)
4. When prompted to continue, click "**Continue Anyway.**"
5. A dialog will appear showing the installation progress and will close after completion.
6. A Found New Hardware dialog box will appear, click "**Finish**" to exit and to close the window.
7. Skip to page 9, step 5 "Set up to Print."

## 4. INSTALL USING PARALLEL CABLE

**Skip this Step if using a USB Cable!**

**\*\*IMPORTANT\*\*** You must have administrative rights in order to perform this installation.

1. Insert DuraLabel® LabPRO Installation CD into the CD-ROM drive.

**Note:** If you encounter a dialog box that says you must have .NET Framework, follow the instructions in the box.

2. If the CD does not automatically run, go to **START >> MY COMPUTER** and double-click on the LabPRO icon.

3. A “Found New Hardware” dialog box may appear. If so, select **“No, not this time.”**

4. Click **“Manual Driver Install”** at the bottom right corner of the DuraLabel® LabPRO installation screen.

5. Click **“Next”** to begin the installation process.

6. Click **“I Agree”** to the License Agreement.

7. Accept the default installation directory as “C:\LabPRO” and click **“Install.”**

8. Click **“Next”** to run the Add Printer Wizard.

9. Select **“Local printer attached to this computer”** and click **“Next.”**

10. Select the port you wish to use and click **“Next.”** (Default location is LPT1.)

11. From the printers listing, select **“Graphic Products DuraLabel® LabPRO”** and click **“Next.”**

12. If given a choice to keep or replace the existing driver, select **“Replace existing driver”** and click **“Next.”**

13. Leave the default name as Graphic Products DuraLabel® LabPRO, select if you wish to use it as the default printer and click **“Next.”**

14. Select **“Do not share this printer”** (this can be changed later) and click **“Next.”**

15. Select **“No”** to “Do you want to print a test page,” click **“Next.”**

16. Click **“Finish”** on the Add Printer Wizard dialog box.

17. When prompted to continue, click **“Continue Anyway.”**

18. Click **“Finish”** on the DuraLabel LabPRO Driver Setup dialog box to complete the installation.

## 5. SET UP TO PRINT

When printing labels it is easier to start with an existing template and make modifications than to create a new label from scratch. On the CD splash screen click on “Install Templates & Symbols.”

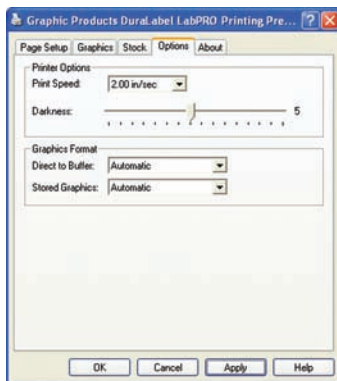
**\*\*IMPORTANT\*\*** Perform these changes before opening the document you wish to print.

### Continuous Label Stock

The Default Printing Preferences on your DuraLabel® LabPRO should be at the proper settings for printing on continuous vinyl and should require no adjustments.

To change settings:

1. Select **START >> PRINTERS and FAXES.**
2. Right-click on “DuraLabel® LabPRO” and select **“Printing Preferences.”**
3. On the Option tab you can adjust the speed and darkness to optimize print quality depending on the ribbon and tape supply you are using.



### Die-Cut Label Stock (Arc Flash & RTK/NFPA)

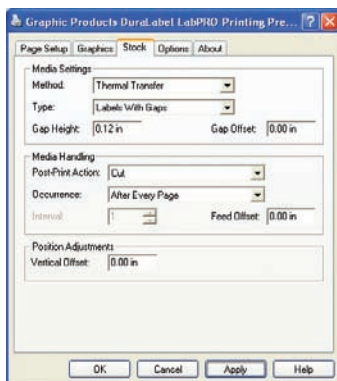
When printing on die-cut labels you will need to calibrate the gap sensor and make some adjustments in the print driver.

To calibrate the gap sensor:

1. Turn off the printer and wait 5 seconds.
2. Hold down the button on top of the printer and turn it back on. The light will change colors then blink red 5 times.
3. Release the button while it's blinking red. Labels will feed through the printer and the gap sensor will be calibrated.

To set up the driver for die-cut label stock:

1. Select **START >> PRINTERS and FAXES.**
2. Right-click on “DuraLabel® LabPRO” and select **“Printing Preferences.”**
3. On the Stock tab under Media Settings change the Type to **“Labels with Gaps.”** (If you do not want to cut between every label, under Media Handling change the Post-Print Action to “None.” Or you can leave the cutter on but specify an interval.)
4. Click **“Apply”** after you have made your changes.





---

**1-800-788-5572**

P.O. Box 4030  
Beaverton, OR 97076

**[www.DuraLabel.com](http://www.DuraLabel.com)**

© 2008, 2009, Graphic Products, Inc. All Rights Reserved

v. 1.0 - 9/8/09