

DuraLabel[®] 9000

==== *User's Guide* ====



Graphic Products, Inc.

1-800-788-5572

Local: 503-644-5572

www.DuraLabel.com

www.GraphicProducts.com

E-mail: info@GraphicProducts.com

INTRODUCTION

Welcome...

And congratulations on the purchase of your new *DuraLabel® 9000 Thermal Transfer Printer!* We've included this guide to get you printing as quickly as possible.

In this guide you'll find information on setting up your printer, configuring your software, and creating custom labels. We know that all topics cannot be addressed in any document and are ready to answer your questions. If you have any questions or concerns, make sure to give us a call!

Please contact us for all your labeling needs. From standardized to custom labels, we're ready to provide the labeling supplies you need. Call 1-800-788-5572 today to get your labeling problems solved.

Graphic Products, Inc. 1-800-788-5572

CONTENTS

Warranty	pg. 3
Getting Started	pg. 4
Minimum System Requirements.....	pg. 4
Supplies	pg. 4
Prepare Printer	pg. 4
Load Printer	pg. 5
Printer Inside Parts	pg. 5
Load Supplies	pg. 6
Load Label Stock.....	pg. 6 - 8
Printer Ribbon Parts.....	pg. 9
Load Ribbon.....	pg. 10 - 12
Connect Printer	pg. 13
Insert Installation CD	pg. 13
Install Using USB Cable	pg. 14 - 15
Install Using Parallel Cable.....	pg. 16 - 19
Configure Driver	pg. 20 - 25
Configure Windows 2000/XP/Vista.....	pg. 20
Continuous Vinyl Printing Instructions.....	pg. 21
Die-Cut Label Instructions	pg. 21 - 23
Black Mark Label Instructions.....	pg. 24
Cut Labels in Intervals	pg. 25
Adjust Print Speed.....	pg. 25
Adjust Darkness	pg. 25
Label Creation	pg. 26
Use Templates.....	pg. 27
Set Up Microsoft Word Document	pg. 28
Select Printer.....	pg. 28
Change Page Setup.....	pg. 30
Orientation	pg. 31
Label Design.....	pg. 32
Text.....	pg. 32 - 33
Graphics.....	pg. 34 - 35
Symbols.....	pg. 36 - 37
Barcodes	pg. 38 - 39
Sequencing	pg. 40 - 43
Import from Excel	pg. 44 - 48
Configure Ethernet Card.....	pg. 49
Cleaning & General Maintenance.....	pg. 50
Print Head	pg. 50 - 51
Cutter.....	pg. 51 - 52
Platen Roller	pg. 53
Troubleshooting.....	pg. 54 - 56
Specifications.....	pg. 57

WARRANTY

The Graphic Products DuraLabel 9000 is warranted to be free from defects in materials or workmanship for a period of two years from the date of purchase with the following exception: The DuraLabel 9000 print head is warranted to be free from defects in materials and workmanship for a period of one year from the date of purchase. Within this period, Graphic Products, Inc. will, at its sole option, repair or replace any components which fail in normal use. Such repairs or replacement will be made at no charge to the customer for parts or labor, provided that the customer shall be responsible for any transportation cost. This warranty does not cover equipment or parts which have been misused, altered, neglected, carelessly handled, used for purpose other than those for which the printer was manufactured or damages resulting from unauthorized service.

NOTE: Repairs have a 90 day warranty. If the unit sent in is still under its original warranty, then the new warranty is 90 days or to the end of the original warranty, depending upon which is longer.

The Warranties and remedies contained herein are exclusive and in lieu of all other warranties whether express, implied or statutory, including any liability arising under any warranty of merchantability or fitness for a particular purpose, statutory or otherwise. This warranty gives you specific legal rights, which may vary from state to state.

In no event shall Graphic Products be liable for any incidental, special, indirect or consequential damages, whether resulting from the use, misuse or inability to use the product for any reason including defect. Some states do not allow the exclusion of incidental or consequential damages, so the above limitation may not apply in all areas.

Graphic Products retains the exclusive right within all warranty periods to repair, replace the product or offer a full refund of the purchase price at its sole discretion. Such remedy shall be your sole and exclusive remedy for any breach of warranty.

For further service information, please contact your Graphic Products representative at 1-800-788-5572 or www.graphicproducts.com.

GETTING STARTED

Minimum System Requirements

Operating System: *Windows 2000 SP4, Windows XP SP2 and Windows Vista*

Memory: *128 MB RAM*

Additional Requirements: *IT Administration Privileges*

Supplies

The ribbon and various print media for the DuraLabel® 9000 have been optimized for compatibility and print quality. Only authorized supplies from Graphic Products will print correctly in the DuraLabel® 9000.

Prepare Printer

Instructions for unpacking, loading supplies and connecting your printer are located in the **Printer Manual** (in electronic form). There is also an instructional video included on the CD, that shows you how to load supplies. Please read and follow those instructions carefully before continuing.

***NOTE:** To view the electronic version of the printer manual you will need a corresponding document viewer (PDF or DOC). A suitable viewer is included on the installation CD - Adobe Acrobat Reader.*

LOAD PRINTER

Printer Inside Parts

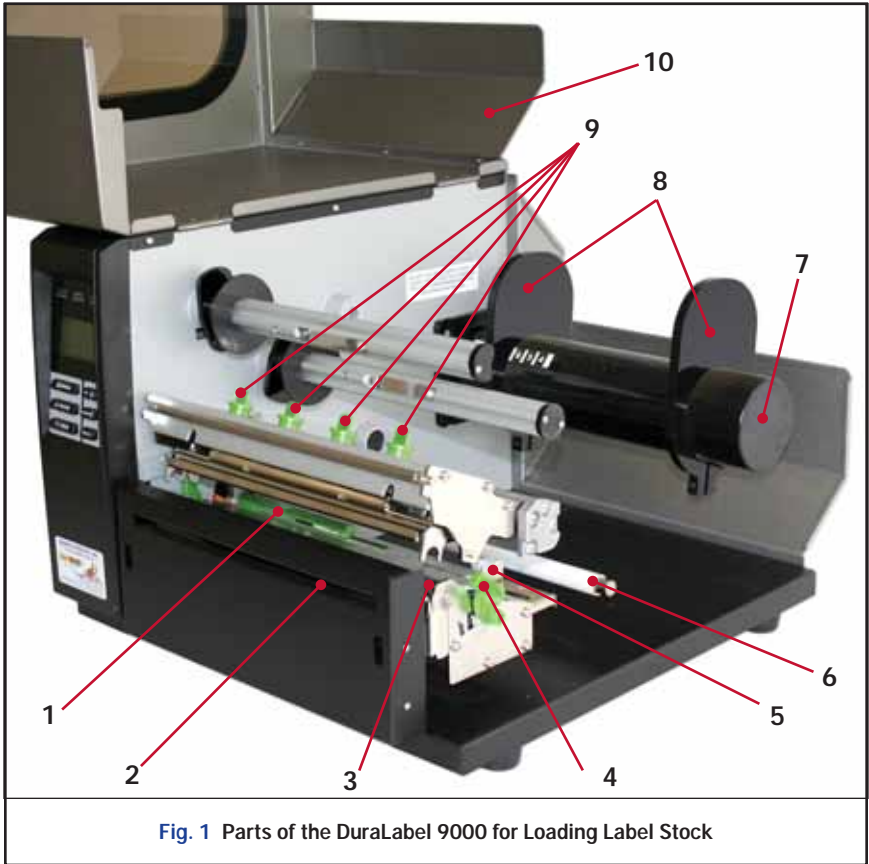


Fig. 1 Parts of the DuraLabel 9000 for Loading Label Stock

1. Media Sensor (*green*)
2. Printed Label Opening
3. Platen Roller (*black*)
4. Print Head Release Lever (*green*)
5. Adjustable Media Guide(s) (*white*)
6. Media Guide Bar (*metal*)
7. Supply Bar
8. Supply Guides
9. Adjustable Pressure Knobs (*green*)
10. Printer Cover

Load Supplies

****IMPORTANT**** *Always turn OFF the power first!*

The ribbon and various printer media for the DuraLabel 9000 have been optimized for compatibility and print quality. Only authorized supplies from Graphic Products will print correctly in the Duralabel 9000.

If the following procedure is not clear, please view the instructional supply loading video on the DuraLabel 9000 CD.

Load Label Stock

1. Ensure that the printer is turned OFF before loading supplies.
2. Open the *printer cover* by lifting up on the handle on the right side of the printer.



3. Push the green *print head release lever* to pop-up the *print head mechanism*.

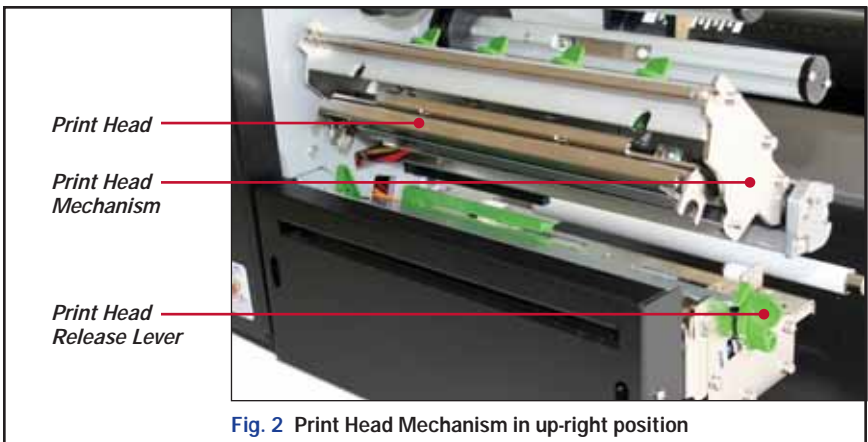
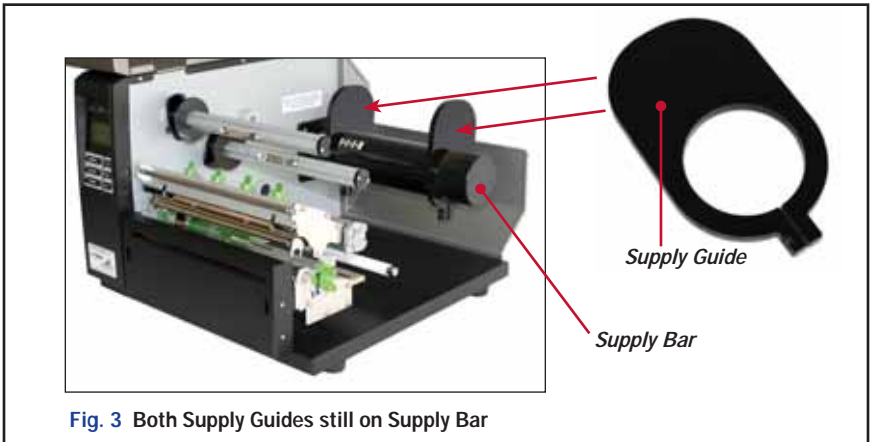
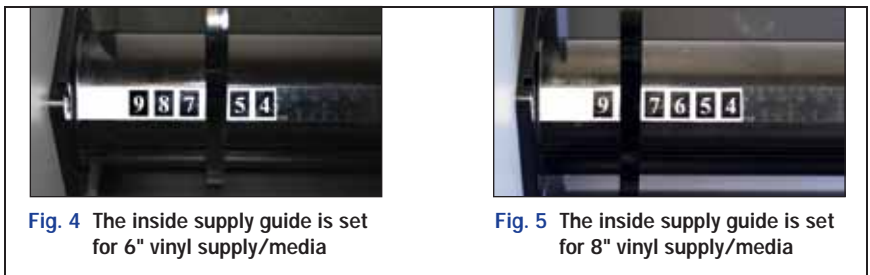


Fig. 2 Print Head Mechanism in up-right position

4. Remove the outside *supply guide* from the *supply bar* and set aside.



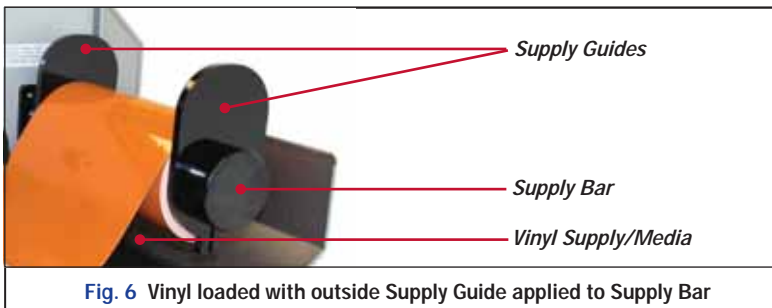
5. Adjust the inside *supply guide* to cover the number corresponding to the size of vinyl supply being loaded. (see Figure 4 & 5)



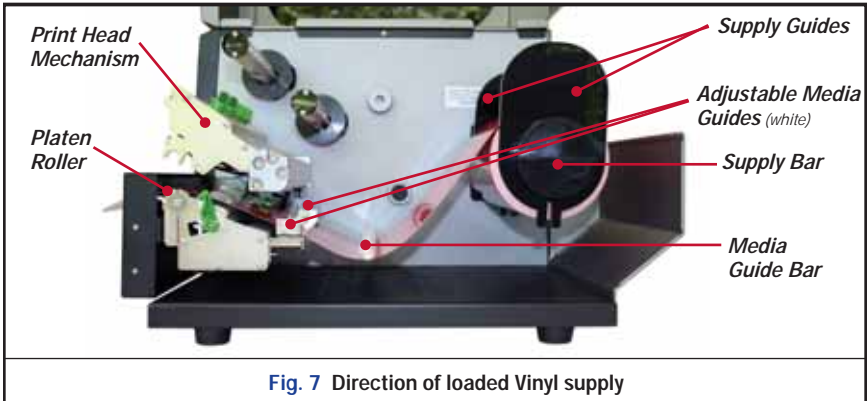
6. Place the vinyl supply onto the *supply bar*.

NOTE: The vinyl supply should roll over the top and towards the front of the printer.

7. Fit the outside *supply guide* onto the *label bar*, against the vinyl supply, but with enough room for the vinyl supply to rotate with ease.

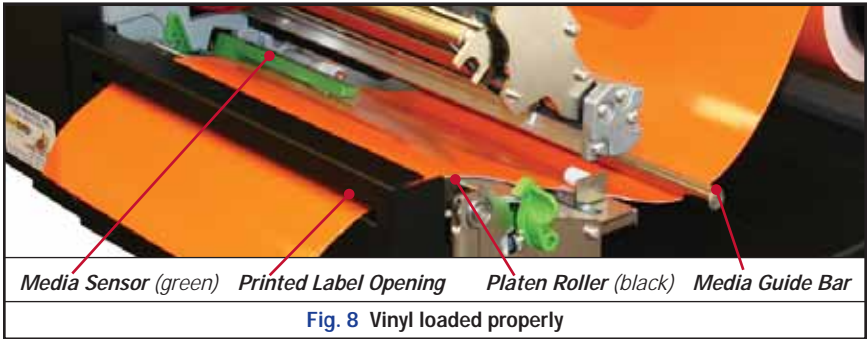


8. Pull the leading edge of the vinyl supply and thread the vinyl supply under the *media guide bar* and through the *adjustable media guides*.

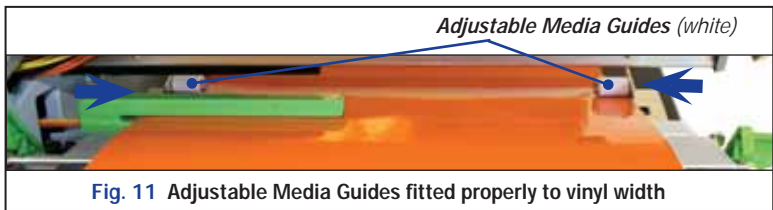


9. Pull the vinyl supply over the black *platen roller* and through the *printed label opening*.

NOTE: Make sure the label supply threads under the green media sensor, located under the print head mechanism.



10. Move the *adjustable media guides* to fit the width of the vinyl supply, securing the vinyl in place.



Printer Ribbon Parts

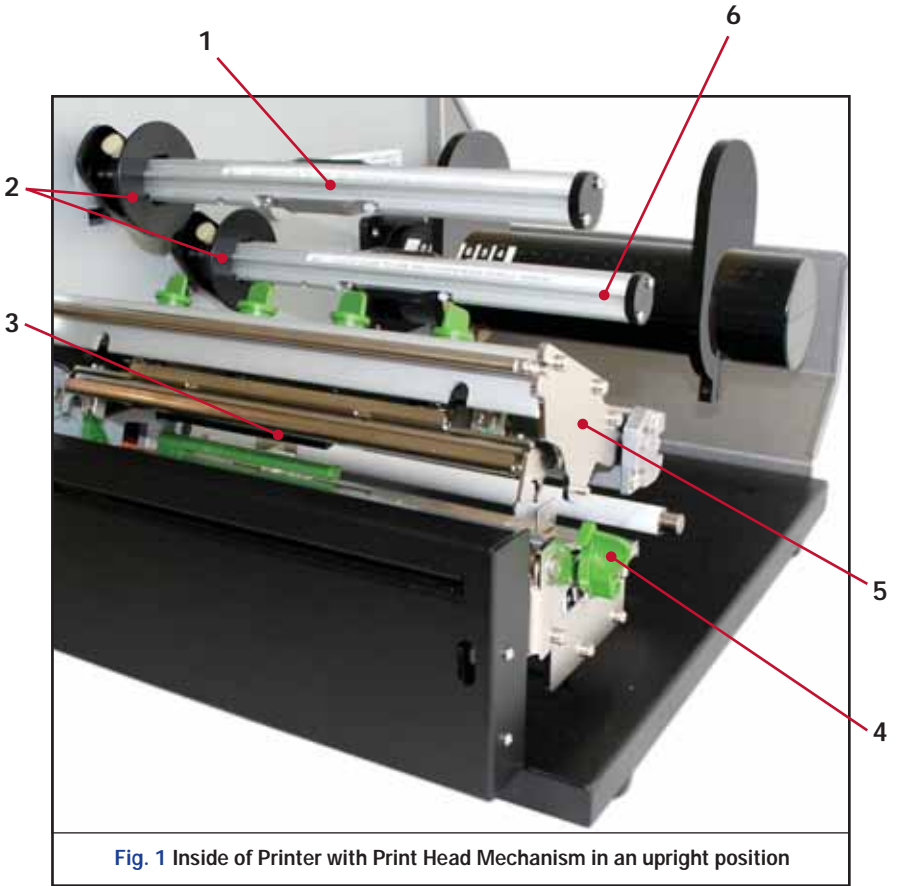


Fig. 1 Inside of Printer with Print Head Mechanism in an upright position

1. Ribbon Rewind Spindle (*front*)
2. Ribbon Guides
3. Ribbon Sensor (*black*)
4. Print Head Release Lever (*green*)
5. Print Head Mechanism
6. Ribbon Spindle (*back*)

Load Ribbon

IMPORTANT! Always turn OFF the printer when loading supplies. Always wait at least 5 seconds before turning ON the power.

Turn printer power OFF first!

1. Set the *ribbon guides* on the ribbon spindles based on the size of ribbon loaded.
 - a. For 4.33" ribbon, move each *ribbon guide* to the line indicated on the label on the ribbon spindles and tighten the screw on the top of each of the *ribbon guides*.



- b. For 8.66" ribbon, move the *ribbon guides* against the inside wall of the printer.



2. Slide an empty supply core onto the front *ribbon rewind spindle*.

NOTE: Make sure the empty supply core is flushed against the ribbon guide.

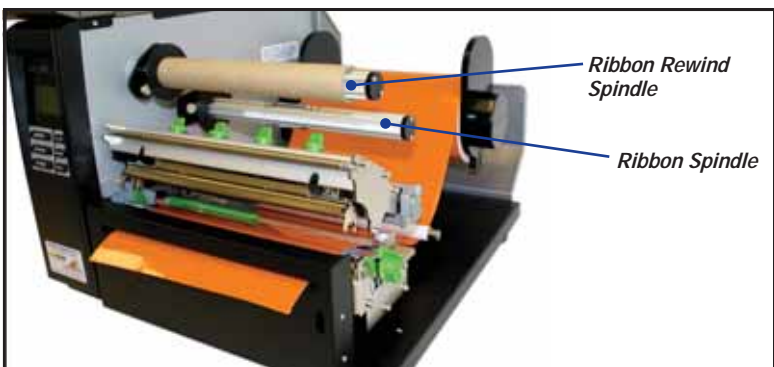


Fig. 2 Empty supply core applied to front Ribbon Rewind Spindle

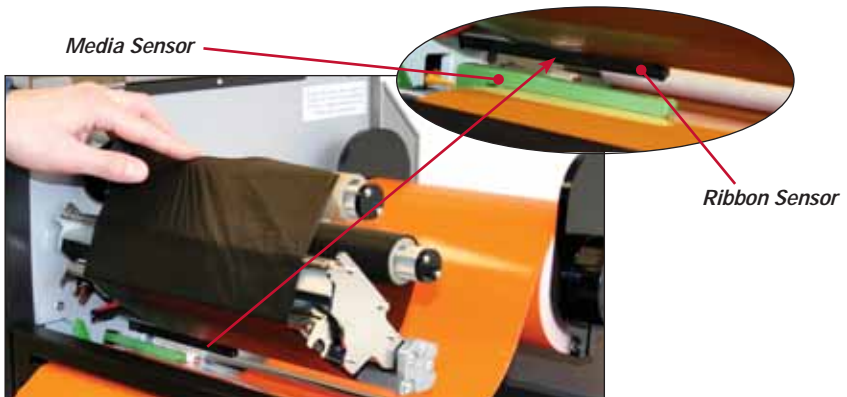
3. Slide a roll of ribbon supply onto the *ribbon spindle*, flushed against the ribbon guide with the leading edge hanging down, towards the back of the printer.



4. Pull the leading edge of the ribbon supply towards the back of the printer to provide enough ribbon to go through the printer.



5. Then pull it down and thread it underneath the *print head mechanism* and above the *ribbon sensor* (black bar above green media sensor).



6. Tape the end of the ribbon supply to the front of the empty supply core.



7. Roll the *ribbon rewind spindle* clockwise a few times, towards the back of the printer to tighten the ribbon and remove flaws and fingerprints.

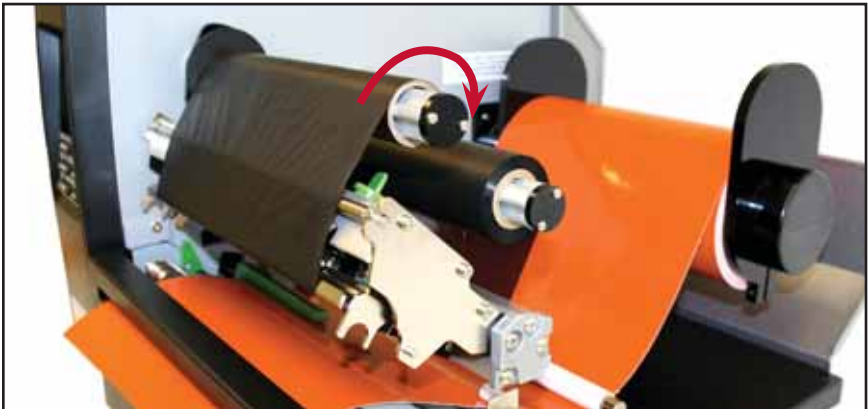


Fig. 3 Ribbon supply tightened

8. With both hands on each side of the *print head mechanism*, close the *print head mechanism* by pressing down.

NOTE: Make sure the *print head release lever* latches closed

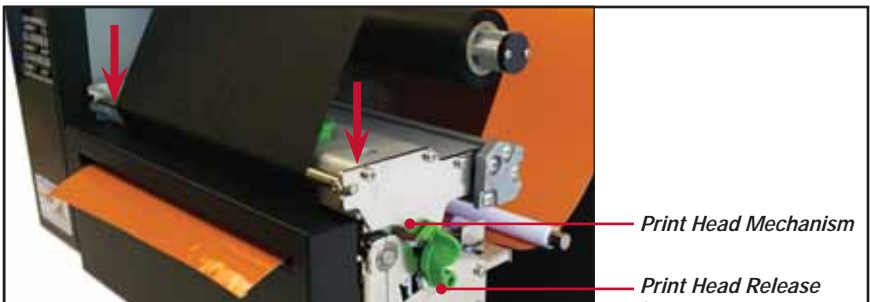


Fig. 4 Print Head Mechanism closed

9. Close the *printer cover*.

10. Turn the printer ON.

IMPORTANT! You must have administrative rights in order to install driver.

NOTE: Find out your Windows version by right-clicking on the **My Computer** icon (located on your desktop). Select the **Properties** option. Your Windows version is located under the **System** heading. Make sure you have installed the latest updates from Microsoft, including service packs.

CONNECT PRINTER

Connect the power supply from the DuraLabel® 9000 to an electrical outlet. Connect the USB or Parallel Cable from the DuraLabel® 9000 to your PC. Power ON the DuraLabel® 9000.

To the Right:
A Found New Hardware notification will appear (only if using a USB cable) in the bottom right hand corner of your desktop after plugging in all components and powering ON the printer.



Insert Installation CD

Before inserting the Installation CD, please refer to the instructions for the type of cable being used. When connecting with a USB Cable, please follow the "Install Using USB Cable" instructions pages 13-14. For Parallel Cable, please follow the "Install Using Parallel Cable" instructions pages 15-18.

Install Using USB Cable

The following instructions (pages 13-14) are only for those using a USB Cable. Skip to page 15 of the User's Guide if installing manually.

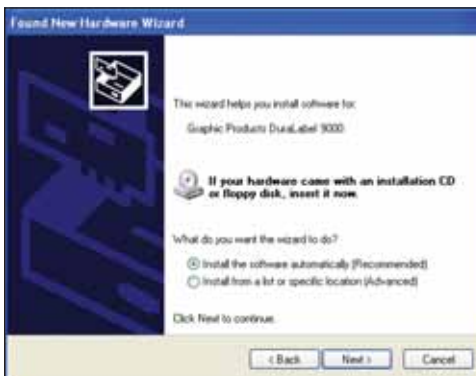
IMPORTANT! You must have IT administrator privileges in order to install driver.

IMPORTANT! If you are upgrading from an existing DuraLabel installation, see the inside cover of the QuickStart Guide.

A Found New Hardware dialog box may appear. If so, select **No, not this time**.



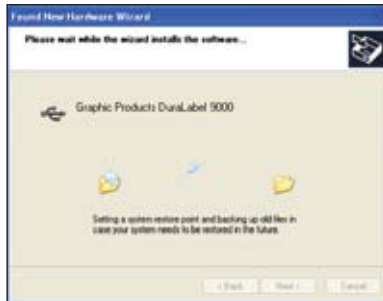
Insert the DuraLabel® 9000 CD into the CD-ROM drive. Select **Install the software automatically** and click **Next**. (This step may run automatically.)



When prompted to continue, click **Continue Anyway**.



A dialog box will appear showing the progress of the files being copied. It will close after copying is complete.



A Found New Hardware Wizard dialog box will appear after completion. Click **Finish** to exit and close the screen. A Found New Hardware notification may appear.



Skip to page 19 of User's Guide, section "Configure Windows 2000/XP/Vista Printer Driver."

Install Using Parallel Cable

The following instructions (pages 15-18) are only for those using a Parallel Cable.

IMPORTANT! You must have IT Administrative Privileges in order to install driver.

Insert the Installation CD into the CD-ROM drive. (If you encounter a dialog box that says you must have .NET Framework, follow the instructions in the box.)

NOTE: If the CD does not automatically run, go to **Start >>> My Computer** and double-click on the DL9000 icon.

A “Found New Hardware” dialog box may appear. If so, select **No, not this time**.

To begin, click **Manual Driver Install** at the bottom right corner of your DuraLabel® 9000 setup screen.



A “DuraLabel 9000 Driver Setup” dialog box will appear, click **Next** to begin installation. Click **I Agree** to the Windows Printer Driver License Agreement.

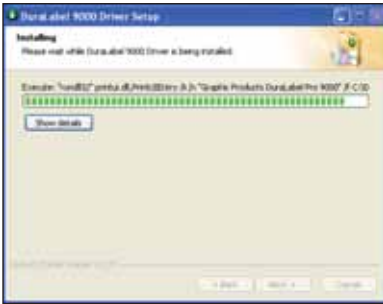


Click **Install** to accept the default directory, “C:\DL9000”



A screen may appear showing the progress of installation.

An **Add Printer Wizard** window should have appeared on your screen; click **Next**.



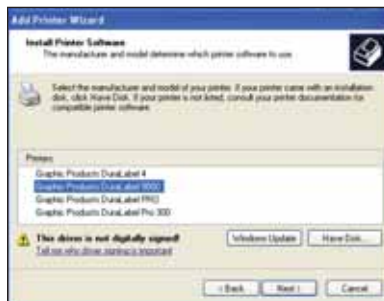
Select either **Local** or **Network** for your printer driver. If you select Local, make sure the “Automatically detect and install my Plug and Play printer,” is unchecked.



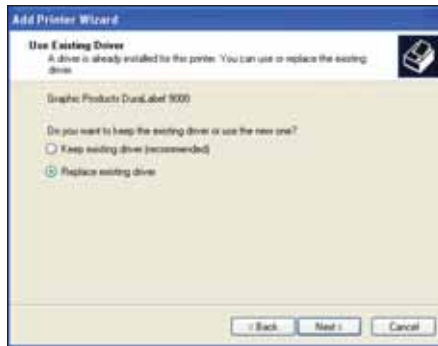
Check **Use the following port**, and select **LPT1** and click **Next**.



Select **Graphic Products DuraLabel 9000** and click **Next**.



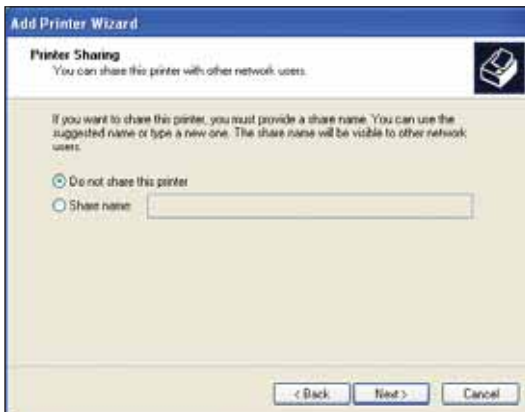
IMPORTANT! If you had previous Seagull Scientific drivers installed, press **Cancel** then reload the cd and refer to the inside cover of the QuickStart Guide for instructions on how to "Upgrade Drivers".



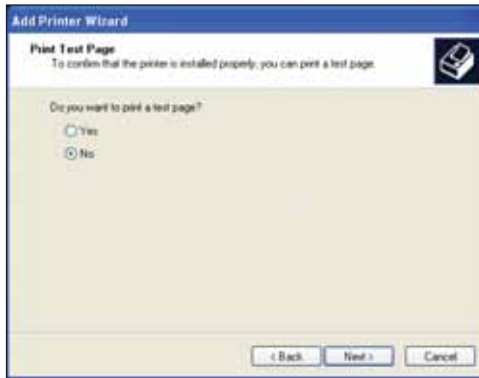
Keep existing printer name as **Graphic Products DuraLabel 9000** and select **Yes** if you wish for it to be set as your default printer, then click **Next**.



Decide if you would like to share the printer with other network users, then click **Next**.



Select **No** to “Do you want to print a test page,” then click **Next**.



Make sure your settings are correct. If so select **Finish**, otherwise select **Back** and change to the correct settings.



If prompted to continue, click **Continue Anyway**.

A dialog box will appear regarding Completing the DuraLabel 9000 Driver Setup, click **Finish**.



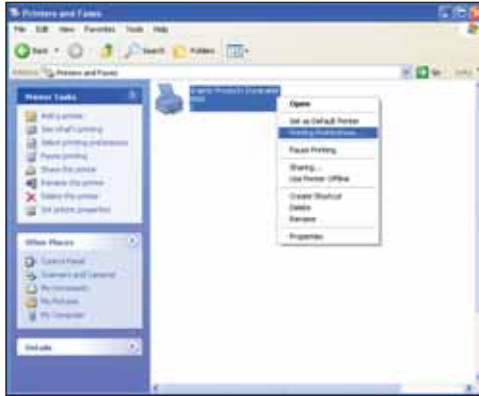
Your driver should be installed and you should be ready to set up for printing.

CONFIGURE DRIVER

Configure Windows 2000/XP/Vista Printer Driver

IMPORTANT! Perform the driver configuration before opening the document you wish to print.

Access the DuraLabel 9000 Printer Properties by clicking the **Start >>> Settings >>> Printers**. This will bring up the **Printers** folder.

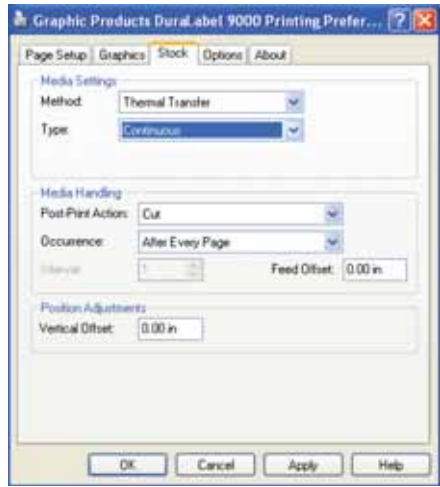


Right-click on the Graphic Products DuraLabel 9000 and select **Printing Preferences** from the drop-down menu. This will bring up the **DuraLabel 9000 Printing Preferences**. Click on the **Page Setup** Tab. Select either **Landscape** or **Portrait** to match the orientation of the label document. Click **Edit** to change the size of the label to match the label document.



Continuous Vinyl Printing Instructions

To set the cutter, select the **Stock** Tab. Set the **Media Settings** “Type” to **Continuous**. In order for the automatic cutter to cut after each label, under **Media Handling** next to “Post-Print Action,” select **Cut** and then next to “Occurrence” select **After Every Page**. These settings may be later adjusted to your specifications in the Printer Properties as you are printing your labels. Select **Apply** on the bottom of the Printing Preferences window.



Die-Cut Label Instructions

Die-Cut Label Calibration

In order to print die-cut labels, the label stock needs to be calibrated. To do so, from the DuraLabel 9000 Control Panel select **Menu >>> Setup >>> Printer Setup >>> Sensor >>> Calibration >>> Gap Mode >>> Automatic**. Once this process is complete follow the "Driver Settings for Die-Cut Labels" to change the driver settings.



Driver Settings for Die-Cut Labels

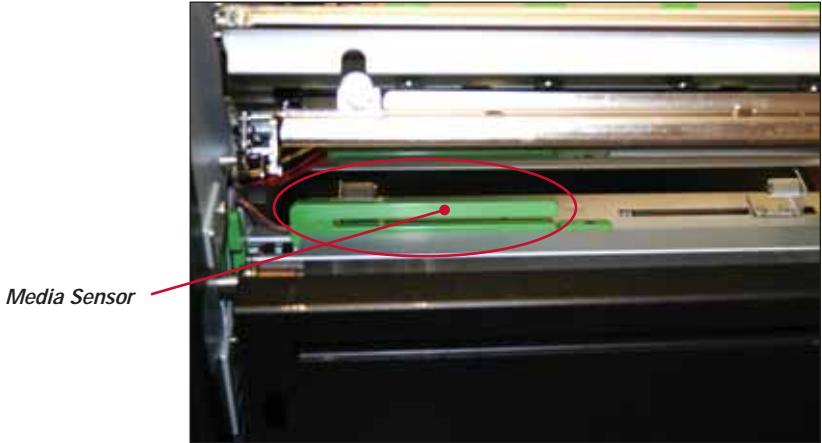
For die-cut labels with the 1/8" gap, the settings on the **Stock** tab should be as follows: “Method” set to **Thermal Transfer**, the “Type” set to **Labels With Gaps**, “Gap Height” set to **0.12 (default)** and “Gap Offset” to **0 (default)**.

NOTE

You can adjust where the printer cuts to make sure the cut is directly centered in the gap by adjusting the Feed Offset in the Stock tab of the Printer Properties.

Media Sensor Adjustment for Die-Cut Labels with Headers

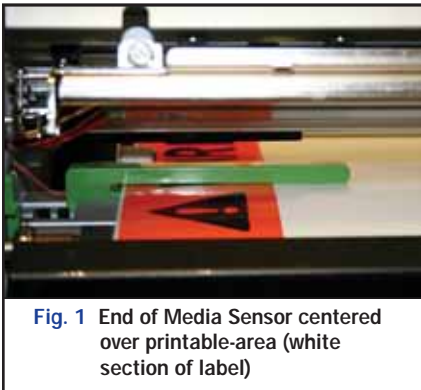
For optimum printing using the various die-cut labels, the media sensor needs to be adjusted either to the right or left.



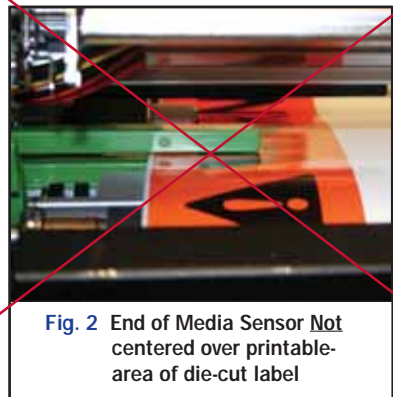
For Die-Cuts with a pre-printed header at the top of the label, such as Arc Flash, Danger, and Notice Die-Cut labels, the media sensor should be adjusted so that the end is centered over the printable area (blank, white printable-area of label)

To do so, slide the Media Sensor until the end of the Media Sensor is located over the white printable-area of the die-cut label.

Correct:



Incorrect:



Media Sensor Adjustment for RTK Color Bar Die-Cut Labels

For RTK Color Bar Die-Cuts which have a blank printable-area at the top, the media sensor should be adjusted so that it is centered over the printable-area (blank white section of label) at the top of the RTK Color Bar die-cut label.

To do so, slide the Media Sensor until the end of the Media Sensor is located over the the printable-area of the RTK Color Bar label.

Correct:



Fig. 10 End of Media Sensor centered over printable-area of RTK Color Bar Die-Cut label

Black Mark Label Instructions

Black Mark Calibration

In order to print labels with black marks, the label stock needs to be calibrated. To do so, from the DuraLabel 9000 Control Panel select **Menu >>> Setup >>> Printer Setup >>> Sensor >>> Calibration >>> Bmark Mode >>> Automatic**. Once this process is complete follow the "Driver Settings for Black Mark Labels" to change the driver settings.

Driver Settings for Black Mark Labels

For black mark labels with the 1/8" black mark, the settings on the **Stock** tab should be as follows: "Method" set to **Thermal Transfer**, the "Type" set to **Labels With Marks**, "Mark Height" set to **0.12** (default) and "Mark Offset" to **0** (default.)



NOTE

You can adjust where the printer cuts to make sure the cut is directly centered on the black mark by adjusting the Feed Offset in the Stock tab of the Printer Properties.

Cut Labels in Intervals

To cut labels in intervals, you may do so by setting the “Occurrence” to **After Specified Interval** under the **Stock** Tab. Set the Interval to the number of labels needed. Click **Apply** to save your settings.



Adjust Print Speed

Print Speed is adjustable from 2.0" to 3.0"/sec. Choose the print speed from the **Option** Tab by clicking on the arrow to the right of the “Print Speed” box.



Adjust Darkness

The Darkness is adjusted from 0 to 15 in increments of 1. From the **Option** Tab, change the darkness by clicking on and dragging the slider on the “Darkness” bar.

The **Graphics Format** settings should not be adjusted. Leave them at **Automatic**.

When finished with your settings, click **Apply** then click **OK**.
Your driver is now set up and you are ready to create your labels!

NOTE

In certain situations, you may need to change the print settings to optimize the DuraLabel® 9000 for printing with certain ribbons or a specialty tape supply. Generally, higher speeds require higher densities. If the ribbon wrinkles, lower the darkness. Increase the Darkness to prevent fading. Decrease to prevent wrinkling.

Recommended Darkness and Print Speed Settings:

Ribbon	Chemical	Standard Black	White	Red	Blue	Green	Orange	Shrink Tube	Die-Cut Labels
Darkness	-	4-6	4-6	4-6	4-6	4-6	4-6	-	8
Speed	2	2	2	2	2	2	2	2	2

LABEL CREATION

Before We Begin...

This documentation describes how to make standard labels. If you are printing RTK labels, please see the RTK software documentation. The RTK documentation was installed on your computer at the same time the RTK software was installed.

The examples in this tutorial were tested with *Microsoft Word 2000*. Some variations may occur with different versions of *Word*, or with different word processors, but the basic principles will be the same. The DuraLabel® 9000 is designed to work with any currently supported *Windows* software, and should work with the software packages that you already have installed on your computer.

All portions of this tutorial assume that the DuraLabel® 9000 has been properly installed and is connected in the online mode. Please see the installation guide for more information before proceeding with this tutorial.

Label Creation With Your Word Processor...

Many have invested in high-end word processing software that is never used to its full potential. Today's word processors come packed with features and capabilities that far surpass the average user's needs. Advanced page layouts, graphic manipulation and printing options are only the beginning of what most word processors have to offer.

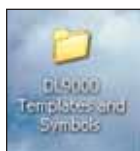
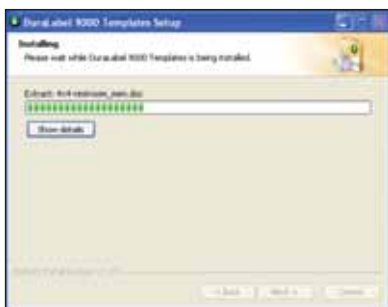
The DuraLabel® 9000 operates off of a standard *Windows* printer driver that makes the printer accessible from a wide variety of software packages. Many printers will only work with expensive, proprietary software that is often buggy and overpriced. With the DuraLabel® 9000 you will be able to use the software that you are familiar with, and get the most out of an investment you've already made.

In this tutorial we will show you how to use *Microsoft Word* to create and print custom labels and signs. If you have further questions concerning your software package, or label creation in general, please contact your customer service representative at 1-800-788-5572.

Use Templates

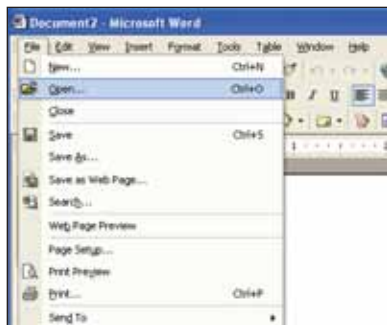
We have provided a variety of templates on the DuraLabel® 9000 to help get you printing labels in no time. To get to these templates, you should **install from the start-up screen on your Installation CD**. This should only take a minute or two.

Click on **Install Templates and Symbols** on the start-up screen. Follow the on screen instructions to install the templates. The Templates will install into a folder on the **Desktop** of our computer.



After installation is complete, templates and symbols will be located in a folder called **DL9000 Templates and Symbols** on your **Desktop**.

Now, when you want to use a template, just open **Microsoft Word**. Select **Open**, then browse the **DL9000 Templates and Symbols** folder. There are a variety of templates for you to choose from, all of which are setup to print correctly on the DuraLabel® 9000. Just customize the label to your specifications and **PRINT!**

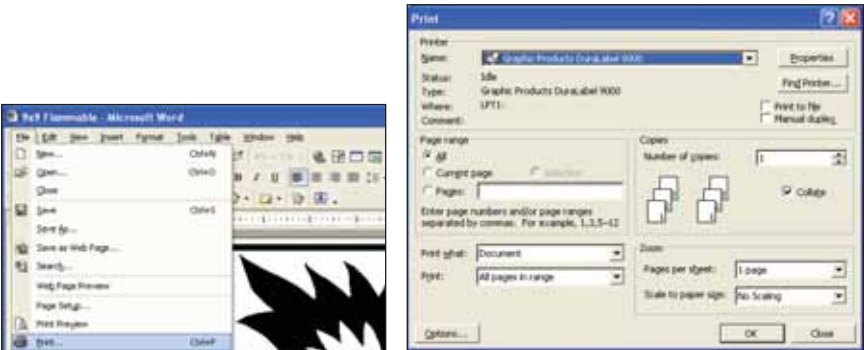


Set Up Microsoft Word Document

Once you open a new or existing document, you must change the paper size and margins. Word processors will default to 8.5" x 11", but changing these settings is generally very simple. The steps are outlined for *Microsoft Word* below:

Select Printer

Before you make any changes to the page layout you must first select the DuraLabel 9000 as your printer. The word processor communicates with the selected printer driver to determine if margin and other settings are within the printers limits. To select the DuraLabel 9000 click on the **File** menu, then the **Print** selection; which will bring up the print dialog:



In the print dialog simply locate the pull-down selection and choose **Graphic Products DuraLabel 9000** as your printer. Click **OK** to continue.

NOTE

You may find that changing these settings for certain types of supplies is optimal. For a label with mainly text and not a lot of large, dark areas, you may want to decrease the darkness by 1 or 2. If you have large areas of solid color to print, you may need to increase the darkness by 1 or 2. You'll have to experiment to get the desired quality.

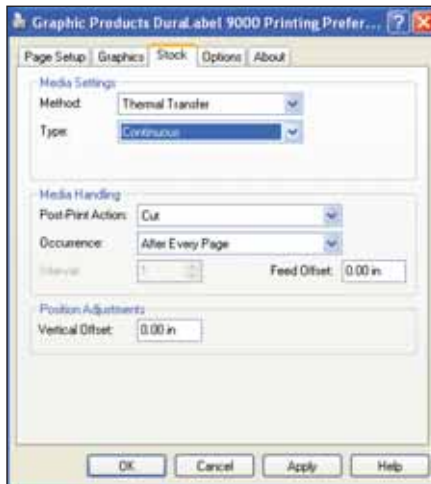
To Change the Automatic Cutter Setting:

You can change the automatic cutter settings without going back into the printer driver.

Go to **File >>> Print** , then click on the **Properties** button next to DuraLabel 9000.



Choose the **Stock** tab.



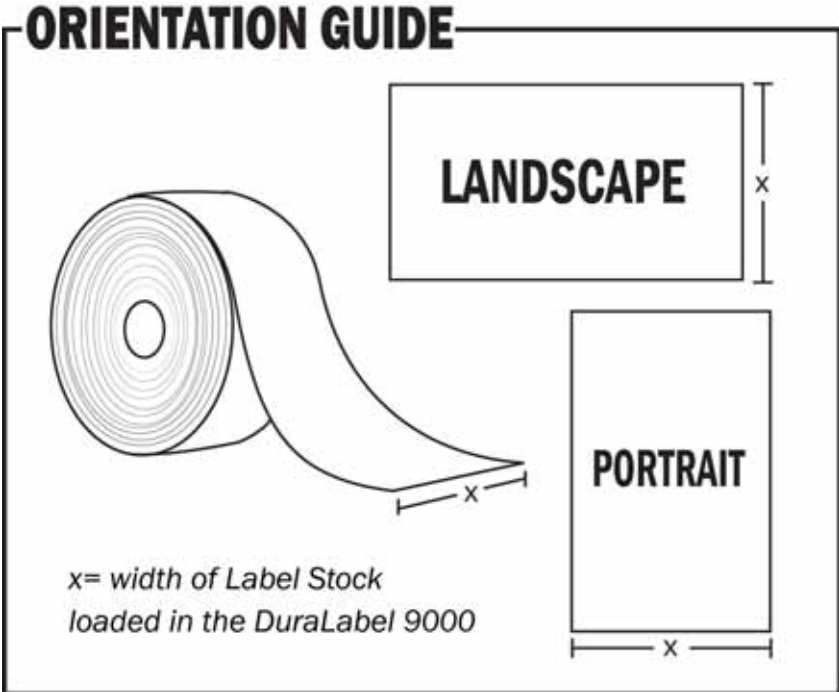
A new dialog will open which allows you to change the cutter options.

If you do not want to cut between labels select **None** under Media Handling next to “Post-Print Action.” If you want to cut between labels, select **Cut** and next to “Occurrence” select **After Every Page**.

Click **Apply** then click **OK** in the **Properties** dialog box to save your new settings.

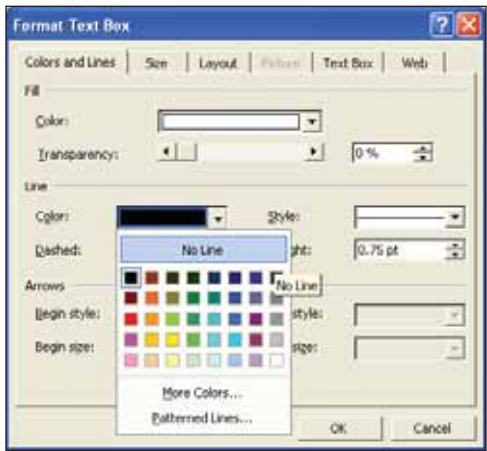
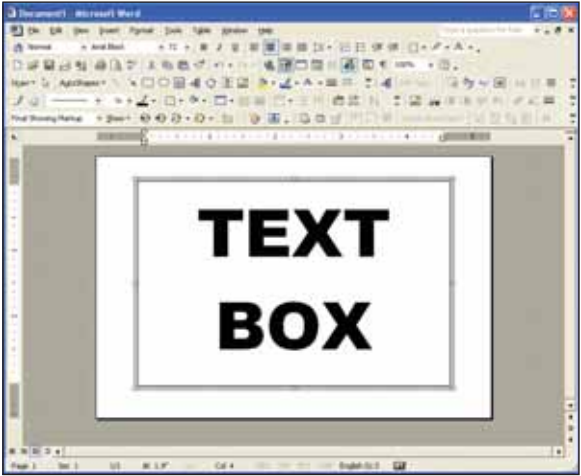
Orientation

Create the label with the width and height of the label. If the **height** of the label is the width of the tape installed in the printer, set the **orientation** to **Landscape**. If the **width** of the label is the width of the tape installed in the printer, then set the **orientation** to **Portrait**.



Click **OK** to commit your changes. With your document properties set correctly you're ready to move on to label design!

Format the text inside the box to any size and style, then position the box for the desired layout. Initially, the text box will have a border around it. To get rid of the border, double-click the text box. When you do this, the **Format Text Box** dialog will appear. Click the **Colors & Lines** Tab. Click the **Color** drop-down menu under **Line** and select **No Line**. Then, click **OK**, and the border will be gone.



NOTE

*If you choose not to use **text boxes** for your text, you will still be able to print your label, but formatting problems may prevent you from getting the results you desire.*

Information on the text box tool is available through your word processors help file.

*Consult the **help file** for more detailed information on using text boxes.*

Graphics

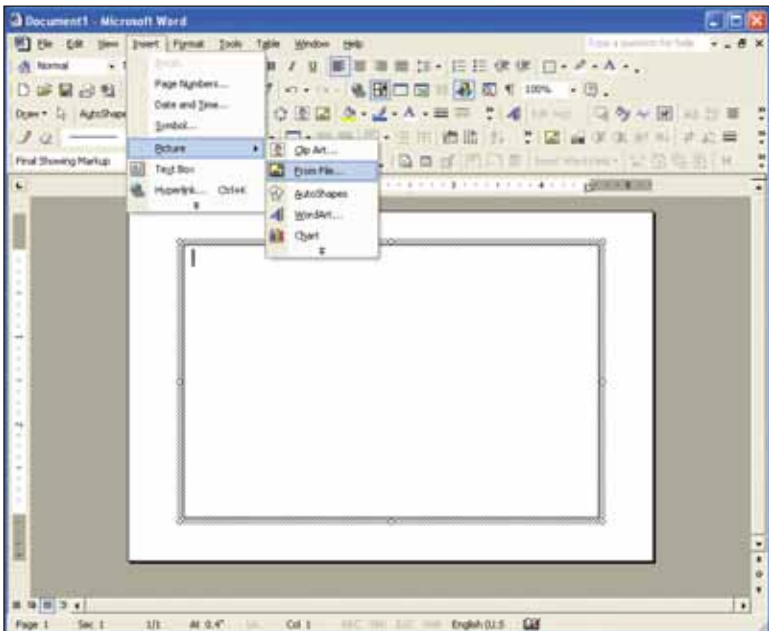
Drawing Tools

Many word processors have built-in drawing tools. You can use these tools to enhance the look of your labels. Designs can be as complex as you desire, but colors should be kept to black and white. Black and white will give you the best contrast, and the best printing output. Actual print color depends on the ribbon and vinyl loaded in the DuraLabel® 9000 and is unaffected by the colors shown on your computer screen.

Images

To insert a picture into a *Word* Document, first **create a new text** box so you can insert the picture into the text box (*this allows the image to be moved.*) Once you've created a text box, insert a picture by clicking inside the box, (*the cursor should be blinking*) then from the menu click on **Insert >>> Picture >>> From File**, then choose the location of the file you desire to insert.

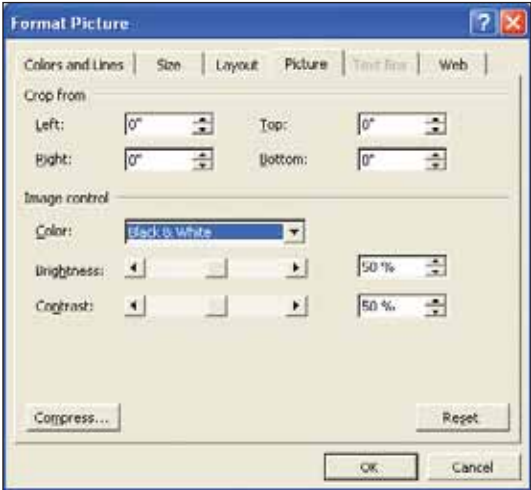
Insert symbols by browsing to the **Symbols** folder on the DuraLabel® 9000 CD. The picture is automatically placed in your *Word* document. Change the size by clicking and holding down on the corner of the box, while dragging it to the desired size.



You can insert other objects, graphics, and clip art from the same pull-down menu. When working with images it is important to remember the type of printer you are using. Images should be formatted so that your printing output matches the capabilities of the printer. The DuraLabel® 9000 is designed for label creation, and has a monochromatic output (*meaning it can only print one color at a time.*)



With *MS Word* it is easy to make your images print in monochrome. Once the image is inserted into the document simply double-click on it and select the **Picture** tab. Under the **Image Control** section choose the **Color** pull-down menu and select **Black and White**. Your image will be instantly converted to a format that the DuraLabel® 9000 can handle.



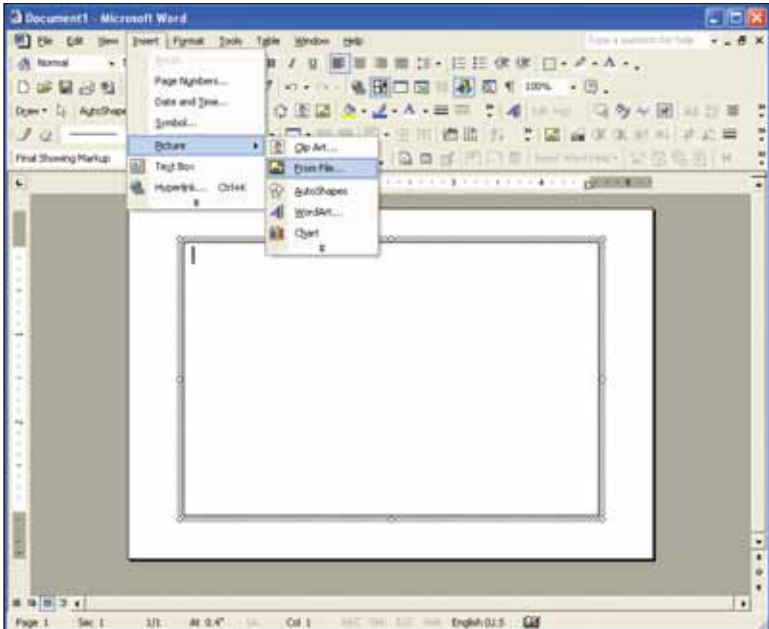
Symbols

Symbols can be used on labels and signage to get your point across visually. When safety is a concern, it is important to have a language that is universal, and symbols accomplish just that.

For your convenience we've included more than 400 ready-to-use symbols, which are divided by category, on your DuraLabel® 9000 CD. Just choose a symbol, insert it into your document, then print a visually appealing and informative label or sign. To view or print a list of all of the included symbols, browse to the Symbols folder on the CD. A PDF of all of the symbols in their respective categories is included in that folder.

Inserting Symbols

Insert symbols into an Microsoft Word document by clicking on **Insert >>> Picture >>> From File**. From that window, browse to the **Symbols** folder. If you have already installed the symbols from the CD (*they automatically install when you install the templates*), there will be a folder on your **Desktop** called **DL9000 Templates and Symbols**.



Barcodes

The barcode program we have included easily displays and prints barcodes from your Windows based word processing program. Install the *dBest Barcode Package* from the CD. When the DuraLabel 9000 start-up screen appears upon inserting the installation CD in the CD drive, simply click on ***dBest Barcode Package*** and follow the on-screen instructions.

You can get all of the technical information about the included barcodes in the **Barcode Font Library >>> Programmers Guide** once the barcode software is installed.

NOTE

The dBest Barcode Font Library supports 11 standard barcode styles: Code 39; Extended Code 39, Interleaved 2/5; Code 128; UCC 128; Codabar; UPC A and E formats, EAN 8 and 13 formats and PostNet. Each barcode style supports a different set of ASCII characters and is used for different situations or industrial applications. For instance: Code 39 supports uppercase characters, numeric characters and a few incidental characters while Interleaved 2/5 only supports numeric data, but does so in a compressed format. You should choose which barcode style to use in your application based upon the type of data you need to support or by other requirements placed upon your application.

Activate the *dBest Barcodes* Toolbar Template in Microsoft Word

1. Open the *MS Word* document in which you would like to create your barcodes.
2. Go to the top menu bar in *MS Word*. Select: **Tools >>> Templates and Add-Ins**
3. A window will appear showing a list of **Global Templates and Add-Ins**. Click the **ADD** button and locate the ***bcfonts.dot*** in the *bcfont* main directory (C:\bcfont\msoffice\).

4. Select the ***bcfonts.dot*** and Click **OK**.
The ***bcfonts.dot*** file should appear in the **Global Templates and Add-Ins** list with the check box selected. If the box is not selected, then select it.

5. Click **OK** to exit, returning to your document. The toolbar should appear within your work space.



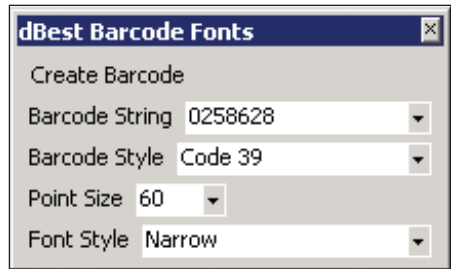
If you do not see the *dBest Barcodes* Toolbar, you need to run the toolbar as a macro. Refer to the following:

1. Go to the top menu bar in *MS Word*. Select: **Tools >> Macro >>Macros**
2. A window will appear with a list: **Macros in: All Active Templates & Documents.**
3. Select: **Barcode Toolbar** and click **Run**

NOTE: To force the toolbar to display every time you start Word, go to **Start >>> Search >>> For Files and Folders** and type in *BCFONT*. Click **OK**. Once the file is found, right click it and choose “copy.” Next, go to the *C:/Program Files/Microsoft Office/Office/Start up/* folder, right click inside of the folder, and choose “paste.”

Using the *dBest Barcodes* Toolbar

The Barcode String is where you can type in the characters for the barcode you wish to create. After typing in the new barcode information, hit the Enter key to save the information, or it will revert back to the previous Barcode String. The Barcode String pull down menu displays previous strings that have been used.



The **Barcode Style** pull down menu allows you to select a variety of barcode styles supported by the *dBest Barcodes Font Library*.

The **Point Size** pull down menu determines the size of the barcode. You can enter custom sizes by typing in the size and hitting the enter key to save the size.

The **Font Style** pull down menu allows you to select six different font widths for each supported **Barcode Style**: three high density and three normal density widths.

Creating a Barcode Using the *dBest Barcodes* Toolbar

Once you have selected the necessary fields on the toolbar, you are ready to create a barcode to place within your *MS Word* document.

1. Place your cursor where you want the barcode to appear. (*You can do this inside a text box if you wish.*)
2. Go to the *dBest Barcodes* Toolbar. Click **Create Barcode**. The barcode will appear where you placed your cursor.

Sequencing

How to do Number Sequencing using Word and Excel.

Sequencing is most commonly used to increment a numeric value to be used in labels for wire wrapping. You can use of an Excel spreadsheet template as well as a *Word* template (included on your installation CD):

1. Open an existing template from the DuraLabel CD or start a new *Word* document.
2. Because Excel uses Pixel measurement instead of inches, you will want to set this to match in *Word*. Go to **Tools** menu >>> **Options** to bring up the property sheet for *Word*. Click on the **General** tab, and locate the option to change the unit of measure. See Fig. 1. Change it to **Point** as this is the same as pixel (1" = 72 points, 2" = 144 points, 3" = 216 points, 4" = 288 points, etc.)

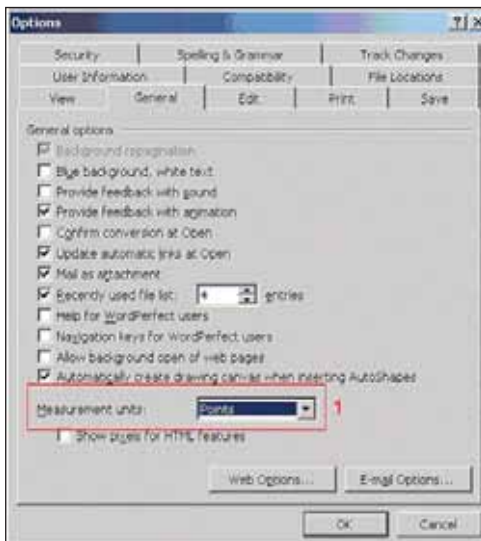


Fig. 1

3. Next go to **File** >>> **Page Setup** and click on the **Paper** tab. If you started from a supplied template, make note of the width and height of the page as you will need to use these values to set the cell size in the Excel template. See Fig. 2. If you're starting from scratch, set the width and height to the desired size of the label.

Now that you have the desired label size, its time to add the text to it. Keeping *Word* open, browse to the provided Excel template: **Number Sequence.xls**

This is a predefined template with the formula already in place to increment a numeric value by one.

1. Open the existing Excel template **Number Sequence.xls**

2. First, format the cells to match the size of label you have. Click on the upper left corner of the spreadsheet to highlight the entire document. See Fig. 1.

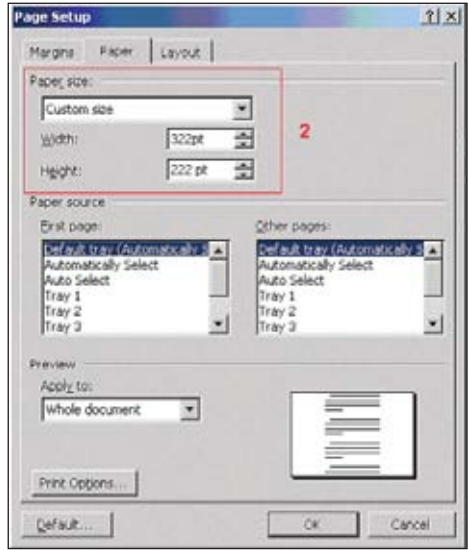


Fig. 2

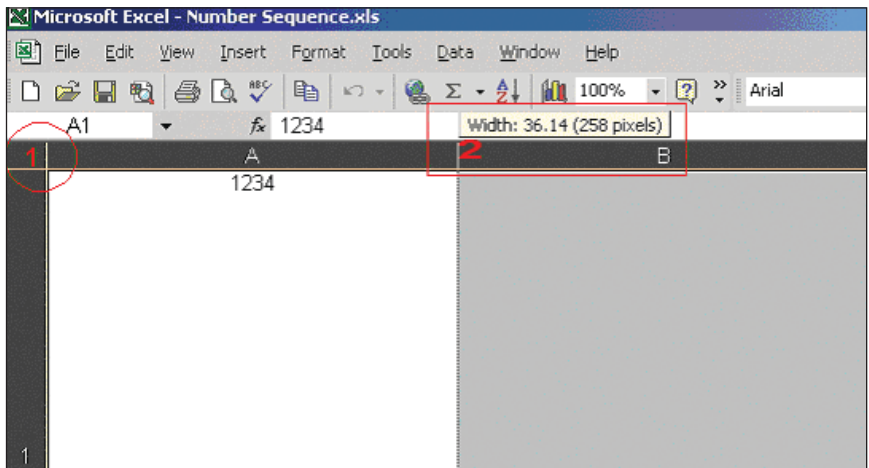


Fig. 3

3. Next, left-click and hold the column line between A and B. See Fig. 2. You can see a small box pops up giving you the pixel size of the width. You will want to set that value to the same width as your label. Do the same for the Row Height. See Fig. 3.

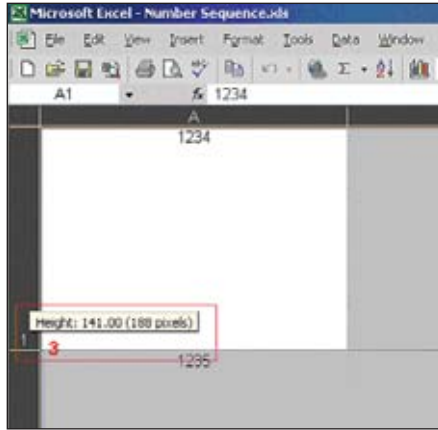


Fig. 4

4. Now that you have the correct size matching your label, change the value in the first cell (*column A, row 1*) and enter any static text you want. Leave it blank for none. In the next cell (*column B, row 1*) enter the number you would like to increment. See Fig. 4. The next cell (*column C, row 1*) enter the value you would like to increment by Default is 1.

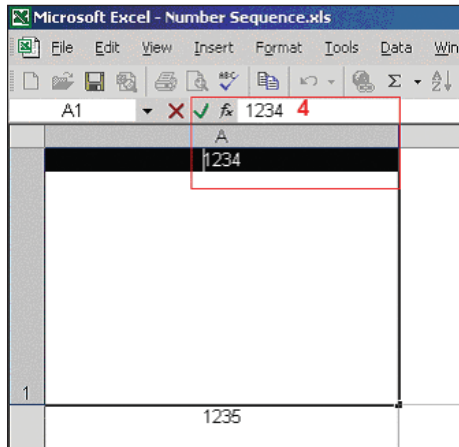
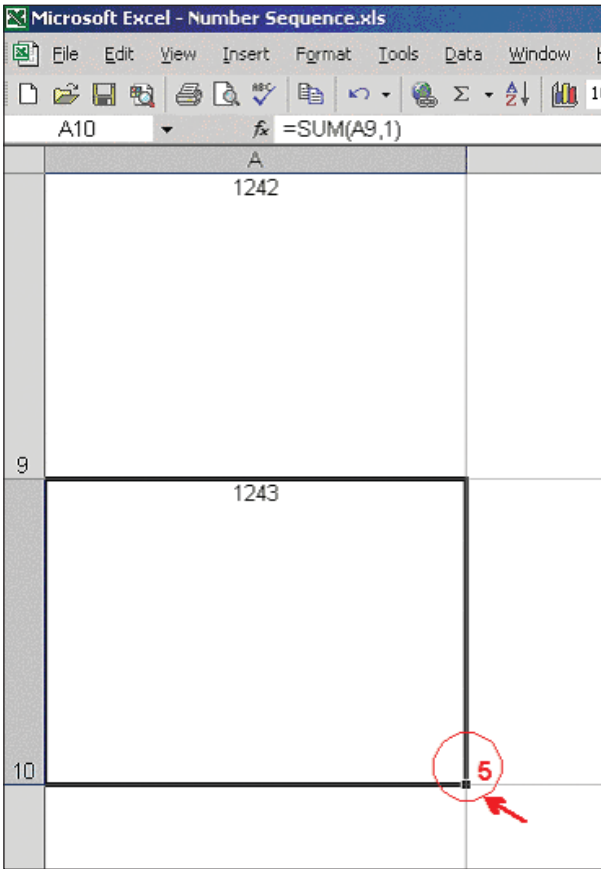


Fig. 5

After setting this, you should see the increment in each cell below cell 1. In this example, the cells have been adjusted in increments of 10. However, to increment further, simply left-click on cell 10 to highlight it, then left-click and hold on the small point in the lower right corner of the cell and drag down over how many cells you want to increment. See Fig. 5. Example: to increment the value 100 times, drag the cells down to the 100th row.

Once you're satisfied with the amount of increments and cell span, its time to copy this into your *Word* template. Go back to the *Word* document that you previously created. **!!Remember!!** The page layout of the *Word* template must match the cell size you specified in your Excel template.



Select the entire Column you just created by clicking on the top header of the cell. In this case, the "A." Go to **Edit >>> Copy**, to copy the entire column. Now switch over to your *Word* document, click anywhere inside your predefined page and go to **Edit >>> Paste**.

If the cells don't paste into the exact measurements of your label, adjust the margins so that they encompass the entire label.

You should be ready to print.

Import from Excel

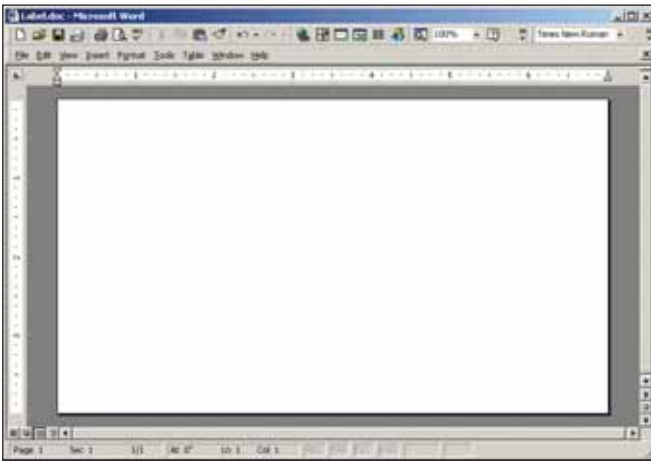
How to transfer Excel spreadsheet information into a Word label

NOTE

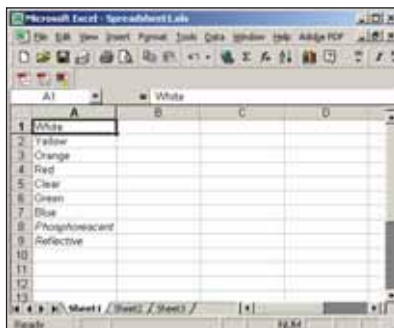
These instructions are for users of Windows 2000. If you are using Windows XP, please follow the directions on page 35.

A. Merging *One Column* from a Spreadsheet to a Label:

1. Make sure the Excel file you are going to merge has been saved.
2. Open up the *Word* Document with the label template.



3. Alter the font in *Word* to the size of your choosing.
4. Open up the Excel file you intend to merge into the *Word* label.



5. Click on column header A, right click the mouse, and select **Copy**.
6. Toggle (**Alt-Tab**) over to the *Word* document and find the **Edit** button on the Windows Tool Bar (*top left of screen*) and then click and select **Paste Special**.
7. Next, select **Unformatted Text** and click **OK**.



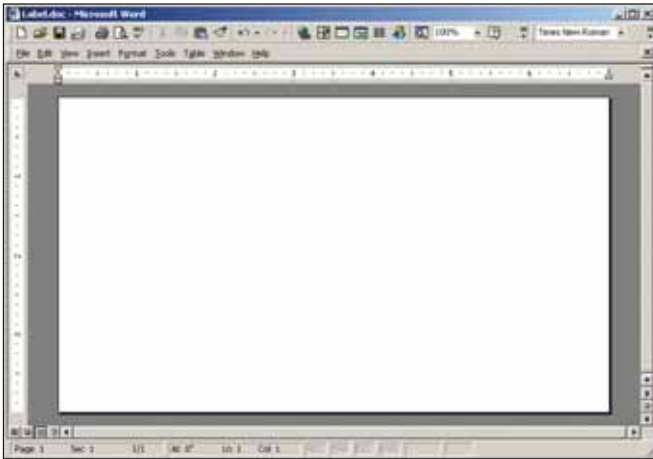
8. The Excel column should now be in the *Word* label. You are now ready to print your labels.



B. Merging *Multiple Columns* from a Spreadsheet to a Label:

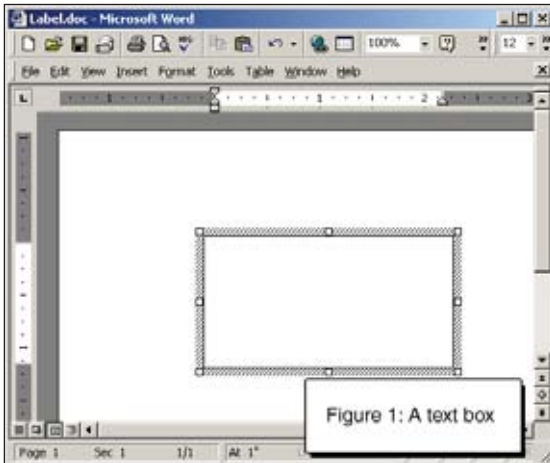
1. Open the saved Excel document you plan to merge into Word.
2. Open your blank label template within *Word*.

3. On the toolbar on top of *Word*, click on **Insert**, then click **Text box**.



4. Use the cross hair cursor. Click in the field of the document, a text box will appear.

5. Resize the text box to your preference. See below

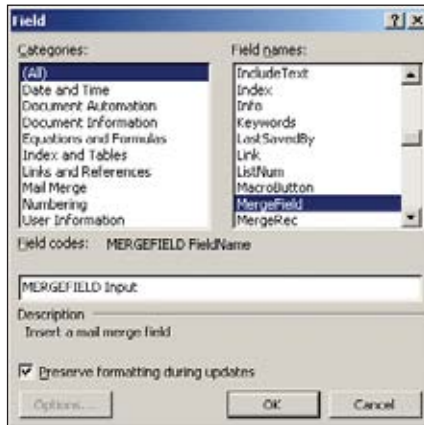


6. When the text cursor is blinking in the text box, click on the **Insert** menu and select **Field**.

7. The box on the left should remain with the blue highlighting of the word "All".

8. On the right column, move the cursor so the blue highlight is over **MergeField**.

9. In the long horizontal box below, “MERGEFIELD” will appear.
10. Put a space after “MERGEFIELD” then type in the column heading from your Excel document that you will want to merge into the label (*i.e.*, “Input.”)
11. It will then look like this: “MERGEFIELD Input.” **See below**



12. Click **OK** and the box will vanish.
13. At this point, you should have the word “Input” (*for example*) in your text box.
14. Create an additional text box(es) within the label and repeat steps 3-12 for each additional cell you plan to transfer from the Excel document into the *Microsoft Word* label.
15. Close the Excel document.
16. On the word toolbar, click on **Tools** then **Merge documents**.
17. At the bottom, click the **Files of Type** drop-down menu.
18. Click on the **All Files** item, then find the file name of the Excel document you plan to merge into Word.
19. Note – make sure you are looking in your **My Documents** folder.
20. Double-click on the correct Excel document.

21. On the next box you see, “ENTIRE WORKBOOK” will be blue highlighted.

Click **OK**.

22. You will then see a pop up box with a question mark. Click **OK**.

23. On your Word document, click on **Tools**, then **Mail merge**.

24. Click on **Create**, then **Form Letters**, then click **Active Window**.

See below



25. Click on **Get Data**, then click on **Open Data Source**.

26. At the bottom, you will see **Files of Type**.

27. Click on the drop down of **All Files** at the bottom.

28. Find and **double-click** on the file name of your Excel document.

29. Click **OK**.

30. Click **Merge**.

31. Click **Merge** and the document will merge from Excel to *Word*.

You are now finished

Help is also available under the Word Toolbar. Click on **Help** and type in “Merge from Excel to *Word*,” then click on **Search**. Then click the option **Use mail merge...**

Configure Ethernet Card

The internal Ethernet card can be configured by using the front display panel buttons and LCD on the DL9000.

'MENU' button on the front display panel will provide access to the printer menu. 'UP' and 'DOWN' buttons will navigate through the menu. To enter data, 'UP' button will increment the highlighted digit by 1 and the 'DOWN' button will shift one over and highlight the next digit. Pressing 'SELECT' will accept the selection. Pressing 'MENU' will take you to the previous screen.

Directions to configure the IP address:

1. Press the 'MENU' button
2. Select Main Menu
3. Select Setup
4. Navigate down to 'Ethernet', press 'SELECT'
5. Select DHCP or Static IP

To set a Static IP

1. Highlight 'Static IP' and press 'SELECT'
2. Set the IP address using the 'UP', 'DOWN', 'MENU' and 'SELECT' buttons as described above.

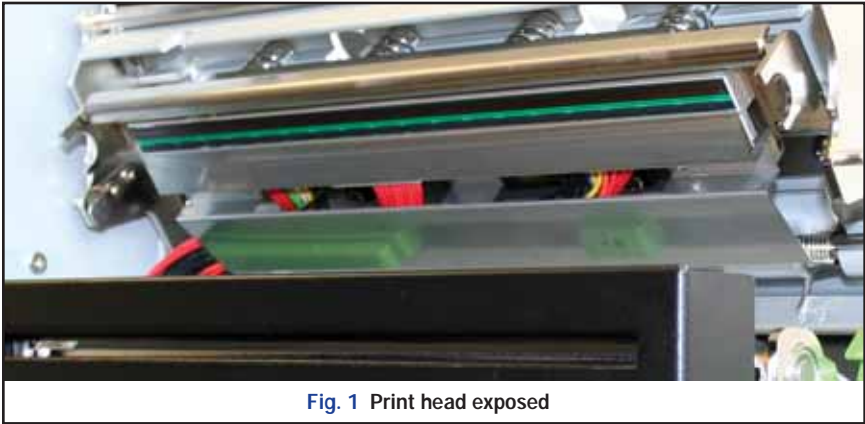
CLEANING & GENERAL MAINTENANCE

Cleaning of the Cutter, Print Head and Platen Roller

IMPORTANT! Always turn the printer OFF before cleaning, performing maintenance, or loading supplies. Always wait at least 5 seconds before turning ON the power.

Basic cleaning of the print head, cutter and platen roller will prolong the life of the printer and will aid in producing crisp, clear labels and signs with every print. Please refer to page 4 & 8 of the User's Guide for better clarification of Printer Inside Parts.

Print Head



1. Pop-up the print head mechanism by pressing on the print head release lever and remove any loaded supplies.

2. Use a pair of scissors or blade to separate any ribbon from the ribbon spindles.

3. Open a cleaning swab by placing swab between your forefinger and thumb. Squeeze swab until it snaps. Alcohol will be distributed to cotton side of the swab.



4. Run the swab back and forth several times across the Print Head to remove any built-up adhesive, ribbon residue, or dust particles.

5. Clean the front and underside of the Print Head.

Fig. 3 The front of the print head should be cleaned to remove any ribbon residue

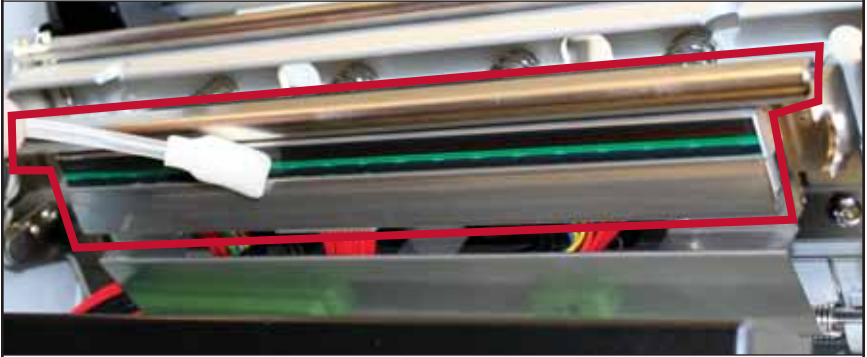


Fig. 4 The entire area outlined in red should be cleaned

Cutter

1. Open the Duralabel 9000 top cover.
2. Rewind any supply that may be loaded away from the cutting mechanism.
3. Using a magnetic screwdriver, remove the two recessed screws on the front of the cutter mechanism.



Fig. 5 Cutting Blades at the printed label opening

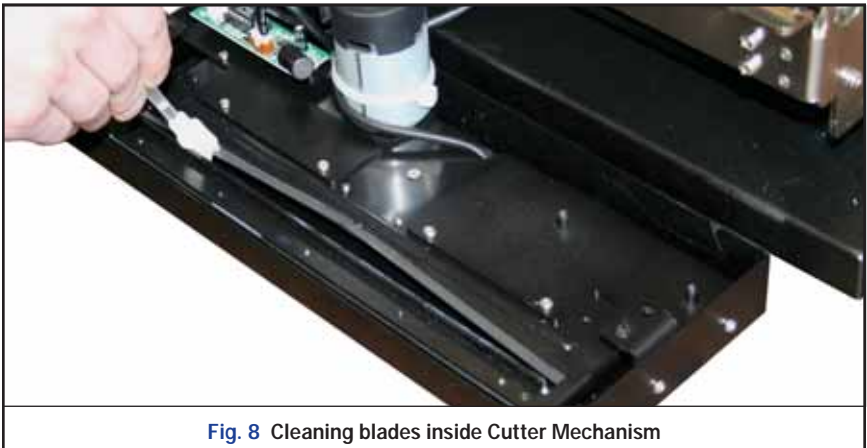


Fig. 6 Remove the recessed screws which are located at the red circles

4. Lift slightly up and pull the cutter mechanism away from the printer body.



5. Open a cleaning swab by placing swab between your forefinger and thumb. Squeeze swab until it snaps. Alcohol will be distributed to cotton side of the swab.
6. Run the swab back and forth several times across all sides of the blades in the cutting mechanism to remove any buildup of labeling adhesive.



7. Apply the cutter mechanism to the front of the printer and tighten the recessed screws back on to the front of the cutter mechanism.

Platen Roller

1. Open a cleaning swab by placing swab between your forefinger and thumb. Squeeze swab until it snaps. Alcohol will be distributed to cotton side of the swab.
2. Run the swab back and forth several times across the Platen roller to remove any buildup. Rotate the Platen roller to clean all sides of the roller.



Fig. 9 Cleaning Platen Roller

3. Give the Platen roller a couple minutes to dry, then reload your ribbon and supply.

Your DuraLabel 9000 is now cleaned and ready for use.

NOTE

The DuraLabel 9000 should be cleaned regularly to maintain optimal performance. The print head, cutter mechanism, and platen roller should be cleaned with alcohol swabs to remove buildup of adhesive, dust, and other substances. Always turn the printer OFF before cleaning, performing maintenance, or loading supplies.

TROUBLESHOOTING

The following are simple solutions to the most common printing challenges that occur with the DuraLabel® 9000. Please call Graphic Products for free customer support.

1. SYMPTOM: Speckles appear throughout label

a. Possible Cause: Supply has not been stored properly and dirt has contaminated the supply

Solution: Replace the label supply if the problem persists after 1st few prints. Store supplies in a dust free environment.



Fig. 1 Dirty vinyl supply

2. SYMPTOM: Solid line appears across entire label

a. Possible Cause: Damaged print head

Solution: Contact customer service by calling 1-800-788-5572



Fig. 2 Bad print head

3. SYMPTOM: Fading occurred during print

a. Possible Cause: The density is set too low

Solution: Increase the density

b. Possible Cause: The print speed is set too high

Solution: Decrease the print speed

(See page 22 of User's Guide)



Fig. 3 Incorrect print settings

4. SYMPTOM: Hash marks appear throughout print

a. Possible Cause: The density is set too high

Solution: Decrease the density

b. Possible Cause: The print speed is set too low

Solution: Increase the print speed

(See page 22 of User's Guide)



Fig. 4 Incorrect print settings

5. SYMPTOM: Missing horizontal line(s) of print

a. Possible Cause: If the horizontal line(s) runs partially through label, there may be foreign particles on the print head

Solution: Clean the print head

b. Possible Cause: Horizontal line(s) runs through entire label (See Fig. 5)

Solution: Replace the print head



Fig. 5 Burnt-out pixel

6. SYMPTOM: Wrinkles appear on one-half of label

a. Possible Cause: The ribbon wrinkles due to the pressure of the print head being uneven

Solution: The Adjustable Pressure Knobs need to be set



Fig. 6 Ribbon wrinkled

Set Left Adjustable Pressure Knobs:

For wrinkles on the right side of the label when printed: Set the two left Adjustable Pressure Knobs.



Two Left Adjustable Pressure Knobs

Front of printer
on this end



Fig. 6 Ribbon Wrinkled

Label dispensed
out this end first

1. Press down on the far left Adjustable Pressure Knob and while holding down, turn the Adjustable Pressure Knob clockwise to the desired number (amount of pressure).
2. Press down on the second-to-far left Adjustable Pressure Knob and while holding down, turn the Adjustable Pressure Knob clockwise to the same number as the far left Adjustable Pressure Knob was set to.



Fig. 7 Press down



Fig. 8 Press down, while turning knob clockwise



Fig. 9 Top-down view of the printer with the two left Adjustable Pressure Knobs set



Fig. 10 Front view of printer with the two left Adjustable Pressure Knobs set

NOTE: You may need to use trial and error to determine which is the best setting to adjust to based on the type of label or sign being printed.

Set Right Adjustable Pressure Knobs:

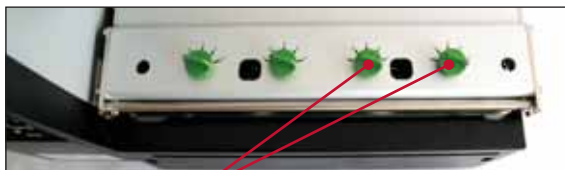
For wrinkles on the left side of the label when printed: Set the two right Adjustable Pressure Knobs.



Front of printer on this end

Label dispensed out this end first

Fig. 11 Ribbon Wrinkled on Left Side



Two Right Adjustable Pressure Knobs

1. Press down on the far right Adjustable Pressure Knob and while holding down, turn the Adjustable Pressure Knob clockwise to the desired number (amount of pressure). (See page 51, Fig 7 & Fig 8 of the User's Guide for demonstration)
2. Press down on the second-to-far right Adjustable Pressure Knob and while holding down, turn the Adjustable Pressure Knob clockwise to the same number as the far left Adjustable Pressure Knob was set to.

SPECIFICATIONS

Printer

- Type: Thermal Transfer
- Print Speed: Selectable speeds of 2 and 3 inches per second
- Resolution: 300 DPI
- Max. Print Width: 9 in.
- Max. Print Length: 50 in.

Indicators & Buttons

- Indicators: POWER, ON-LINE & ERROR
- Buttons: POWER, UP, DOWN, SELECT, PAUSE, FEED & MENU

Communication Interface

- Communications: USB 2.0, RS-232C, & Centronics
- Memory: 8 MB Flash memory, 32 MB SDRAM, SD Flash memory card slot

Power Requirements

- Input Voltage: Switching power, 115 VAC/230 VAC, 5A/3A, 50-60 Hz

Environment

- Operating Temperature: 41 °F - 104 °F (5 °C - 40 °C)
- Operation Humidity: 20% - 85% non-condensing
- Storage Temperature: 104 °F - 140 °F (-40 °C - 60 °C)
- Storage Humidity: 5% - 90% non-condensing
- Ventilation: Free air movement

Label Stock

- Type: Continuous, Black Mark & Die-Cut
- Width: 4 in. - 9 in.
- Gap Height: 0.12 in. min.
- Black Mark Height: 0.08 in. min.
- Black Mark Width: 0.31 in. min.

Ribbon Supply

- Type: Wax, wax/resin, resin
- Capacity: 300 m. with 1 in. core

Printer Body

- Dimensions: 13 in. (H) x 18.5 in. (W) x 21.65 in. (L)

For more specifications, please call 1-800-788-5572 to speak with a representative.



1-800-788-5572

P.O. Box 4030
Beaverton, OR 97076

www.DuraLabel.com

© 2009, Graphic Products, Inc. All Rights Reserved

v. 1.0 - 7/30/09