



# **INTRODUCTION**

Congratulations on your new purchase of the DuraLabel 4 TTP! This guide is included to get you printing as soon as possible.

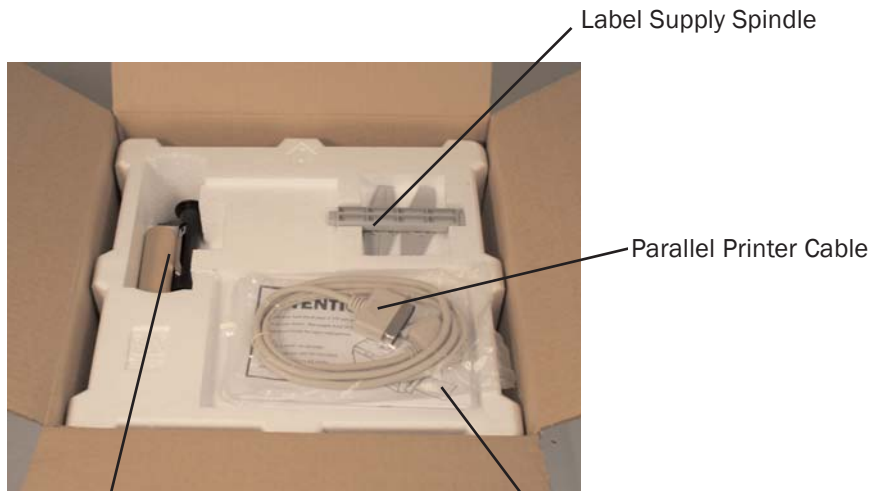
With this guide you will learn how to set up your printer and print labels.

If you need more help with setting up your printer, please refer to the DuraLabel 4TTP Manual (included on the installation CD), visit [www.duralabel.com](http://www.duralabel.com) or give us a call.

**Graphic Products, Inc.**  
**1-800-788-5572**

<b>Contents:</b>	
Printer Assembly .....	pg. 2-3
Install Driver .....	pg. 4
Add the Printer .....	pg. 5
Set Up to Print .....	pg. 6
Load the Printer .....	pg. 7
Load Ribbon .....	pg. 7
Load Label Media .....	pg. 7
Printer Parts .....	pg. 8

## WHAT YOU SHOULD RECEIVE



Label Supply Spindle

Parallel Printer Cable

2 Ribbon Spindles,  
1 of them has an  
empty core

DL4 TTP Installation CD &  
DL4 TTP Quick Start Guide

DuraLabel 4 Thermal Transfer Printer

AC Adapter



### Contents of Package:

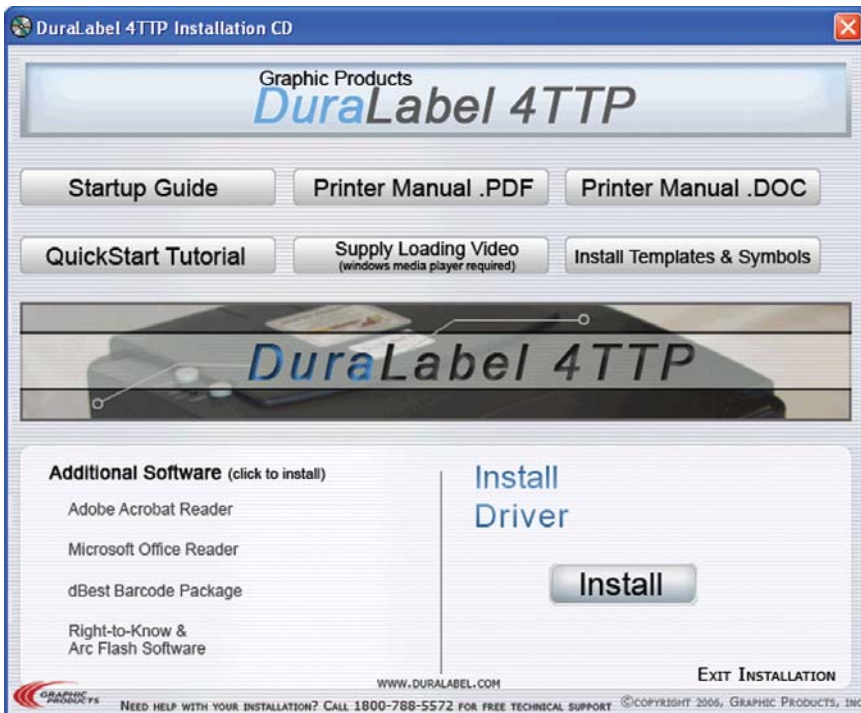
- ♦ DuraLabel 4TTP
- ♦ DL4 TTP Installation CD
- ♦ DL4 TTP Quick Start Guide
- ♦ Parallel Printer Cable
- ♦ AC Adapter
- ♦ 2 Ribbon Spindles (black spindles, one will have an empty core on it)
- ♦ Label Supply Spindle
- ♦ 2 Fixing Tabs (for each end of the Label Supply Spindle)

If you are missing a part, please call your Graphic Products representative.

## INSTALL THE DRIVER

**IMPORTANT!** You must have administrative rights in order to perform this installation.

1. Insert DuraLabel 4TTP Driver CD into the CD-ROM drive.
2. If the CD does not automatically run, double click the CD icon to run the installation program.
3. Click "Install" in the Install Driver section of the installation screen.
4. Agree to the terms of the license agreement and click "Next."
5. Accept the default installation directory as "C:\Seagull" and click "Next."
6. Check the "Run Add Printer Wizard..." box in the Options menu and click "Finish."



## ADD THE PRINTER

For Windows XP

If you are using a version of Windows other than Windows XP, please see your system documentation or help files for adding a local printer. If the Add Printer Wizard doesn't launch after the driver installations, click "Add Printer" from the "Printers and Faxes" window.

1. In the initial screen, click "Next."
2. Select "Local printer attached to this computer" and click "Next."
3. Select the appropriate port from the selections (usually LPT1) and click "Next."
4. Click "Have Disk..."
5. In the "Copy manufacturer's files from:" text field enter "C:\Seagull" and click "OK."
6. From the printers listing, select "TSC TTP-342M Plus" and click "Next."
7. If given a choice to keep or replace the existing driver, select "Replace existing driver" and click "Next."
8. Change the printer name to "DuraLabel 4TTP" and click "Next."
9. Select "Do not share this printer" (this can be changed later) and click "Next."
10. Answer "No" to "Do you want to print a test page," click "Next," then "Finish."

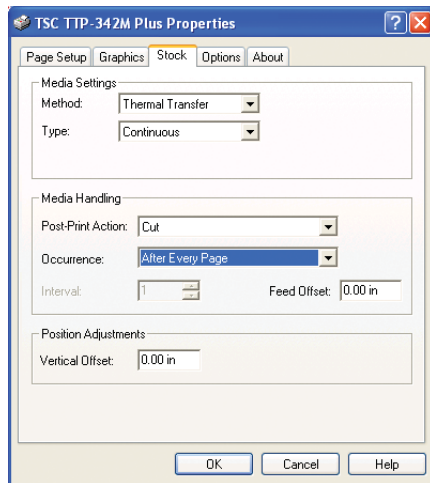


## SET UP TO PRINT

For continuous rolls of vinyl

**IMPORTANT!** Perform this procedure before opening the document you wish to print.

1. Click on the start button in the lower left hand corner and navigate to “Printers and Faxes”, right-click on the DuraLabel 4TTP and select Printing Preferences...
2. Go to the “Page Setup” tab and in the “Stocks” section, select “USER 4.00 in x 6.00 in” and click “Edit”
3. In the “Edit Stock” window, enter the following attributes:  
Width: 4.00 in.  
Height: 40.00 in.  
Exposed Liner Width: 0.00 in.
4. Click “OK” to save your changes.
5. Select each of the other sizes (2x4, 4x4, 4x6) and delete them using the delete button.
6. Navigate to the “Stock” tab.
7. Make the following selections:  
Method: “Thermal Transfer”  
Type: “Continuous”  
Post-Print Action: “Cut”  
Occurrence: “After Every Page”
8. Navigate to the “Options” tab and make the following selections:  
Print Speed: “1.00 in/sec”  
Darkness: set slider to 7
9. Click “OK” to save changes and exit Printing Preferences.



## LOAD THE PRINTER

Refer to pages 8-9 of the Quick Start Guide for references of printer parts.

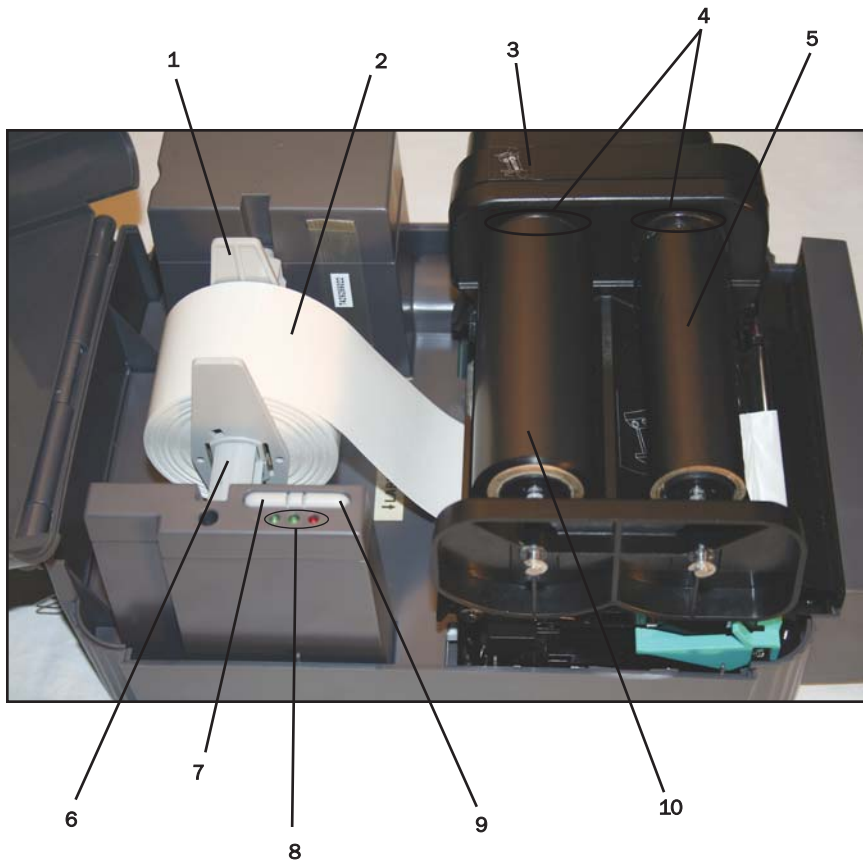
### Load Ribbon

1. Open the printer cover and release the Ribbon Mechanism.
2. Place an empty core on the front Ribbon Rewind Spindle.
3. Place ribbon supply onto the back Ribbon Supply Spindle.
4. Make sure the flanges on the end of the ribbon spindles are on the right side of the printer when viewing from the front. See #4 on page 8.
5. Thread the ribbon behind and underneath the Ribbon Mechanism.  
**Note:** You should still be able to see the word “RIBBON” in the back, underside of Ribbon Mechanism.
6. Tape the entire width of the end of the ribbon to the front empty core.
7. Roll the Ribbon Rewind Spindle back a few times until fingerprints and flaws have been removed.

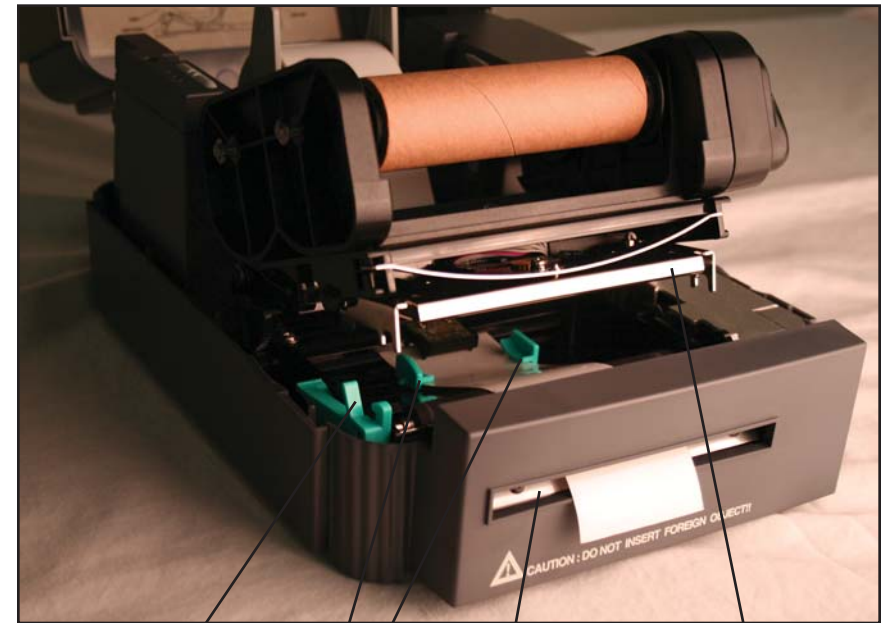
### Load Label Media

1. With the Ribbon Mechanism still in upright position, center the Label Media on the Label Supply Roll Spindle using the Fixing Tabs.
2. Guide the label media underneath the Ribbon Mechanism.
3. Thread the label media through the Printed Label Opening, leaving about 1/2" label media hanging out the opening.
4. Secure the Label Media in place by moving the Adjustable Label Guides to hold the label media in the center.
5. Lock the Ribbon Mechanism by pressing down and close the cover.

## PRINTER PARTS



1. Fixing Tabs
2. Label Supply/Media
3. Ribbon Mechanism
4. Flange on Ribbon Spindle
5. Ribbon Rewind Spindle
6. Label Supply Roll Spindle
7. PAUSE Button
8. PWR., ON LINE, ERR. Indicators.
9. FEED Button Label Media Sensor
10. Ribbon Supply Spindle



- Printer Carriage Release Lever
- Adjustable Label Guides
- Printed Label Opening
- Print Head Assembly

---

---

Toll Free: 1-800-788-5572  
Local: 503-644-5572

Graphic Products, Inc.  
P.O. Box 4030  
Beaverton, OR 97076

[www.DuraLabel.com](http://www.DuraLabel.com)  
[www.GraphicProducts.com](http://www.GraphicProducts.com)  
[info@GraphicProducts.com](mailto:info@GraphicProducts.com)